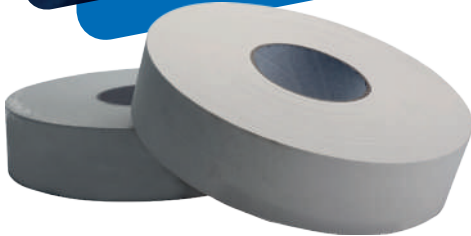




# Joint-Tape



## Gyproc Paper-Tape

Gyproc Paper-Tape has been designed for use with Gyproc Jointing Compound in reinforcing joints and corners in gypsum drywall interiors. The tape has a positive crease to simplify application in corners. The tape may be used dry or damp, and provide exceptional strength to joints when used with Gyproc Jointing Compound. Gyproc Paper-Tape can also be used for repairing cracks or damaged plasterboard. It offers a quick method of practical application.

### PRODUCT FORMAT

Roll Width	50 mm
Roll Length	150 m
Quantity Per Box	10 rolls

### SPECIAL PROPERTIES

- Gyproc Paper-Tape is manufactured from a special cross fibred-paper with added tensile strength to help prevent tearing, wrinkling or stretching.
- Spark perforation and chamfered edges to reduce the risk of bubbling or blistering.
- Designed for reinforcing flat joints when finishing plasterboard joints.

## Gyproc LEVELLINE

Gyproc LevelLine is a co-polymer core corner tape with a built-in flexible hinge that fits to any internal or external corner angle on walls or ceilings. Gyproc LevelLine can withstand severe impacts reducing call backs or repairs. As well as preventing cracks from forming in the future, Gyproc LevelLine corner tape can be used to repair existing cracks without extensive repairs. It is quick, safe and easy to install due to its metal-free polymer composition.

### PRODUCT FORMAT

Roll Width	69.9 mm
Roll Length	30.5 m
Quantity Per Box	12 rolls

### SPECIAL PROPERTIES

- Robust and durable
- Hides irregular framing
- Less filler required
- Flexible and easy to install
- Rust resistant

