



# Glasroc® H

A water barrier, not a time barrier



**Glasroc® H (Hydro) features advanced GRG technology with pre-coated glass mats on the board's surface, replacing paper liners. The gypsum core reinforced with glass fibre, provides superior moisture and mold resistance. The light blue pre-coated surface reinforced with glass mats is ideal for direct tiling or smooth decoration, offering enhanced resistance to mold.**


### CHARACTERISTICS

High-performance board with a gypsum core that provides superior moisture and mold resistance.

### RECOMMENDED USE

Suitable for use as a tile backer and in wet area interior environments where there is frequent exposure to moisture or high humidity, such as shower enclosures, bathrooms, and swimming pool halls.

### PRODUCT FORMAT

Thickness	12.5mm
Nominal Weight	11.50kg/m <sup>2</sup>
Nominal Sheet Size	1200mm x 2400mm
Edge Type	Recessed Edge 

### MOISTURE AND MOLD RESISTANCE

- Water absorption <5% in accordance to BS EN 520
- Surface water absorption <180g/m<sup>2</sup> in accordance to BS EN 520
- Mean water vapour resistance 0.318m<sup>2</sup>.h.Pa/mg in accordance to BS EN 12572
- Water vapour diffusion resistance 18μ in accordance to BS EN 12572

### FIRE RATING

- Class A1 reaction to fire in accordance to BS EN 13501-1
- Non-combustible in accordance to BS 476: Part 4
- Classified as Class 0 material in accordance to BS 476: Part 6 & 7
- Complete drywall system providing up to 2 hours fire rating in accordance to BS 476: Part 22

### THERMAL INSULATION

- Recommended design thermal conductivity, k-value 0.19 W/mK in accordance to BS EN 12664

### AESTHETIC PROPERTIES

- Crack-free
- Seamless and smooth finishing

### HANDLING AND WORKABILITY

- Lightweight
- Quick and easy installation

### MANUFACTURING SPECIFICATIONS

- In compliance with BS EN 520

### LIMITATIONS

Glasroc® H boards are not suitable for use in above 49°C but can be subjected to freezing conditions without the risk of damage. They are unsuitable for any areas subjected to prolonged immersion, such as inside swimming pools.

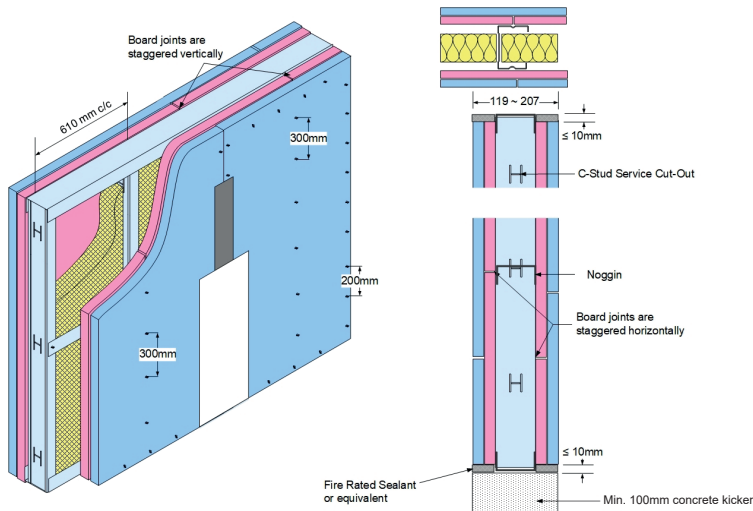
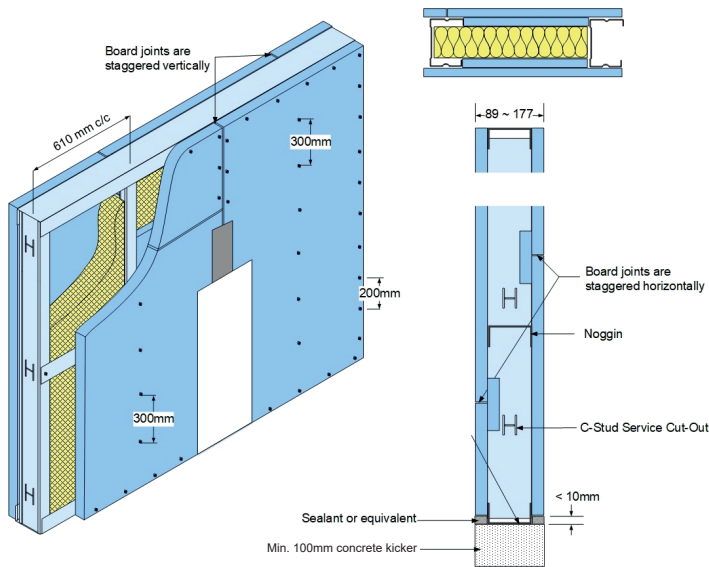
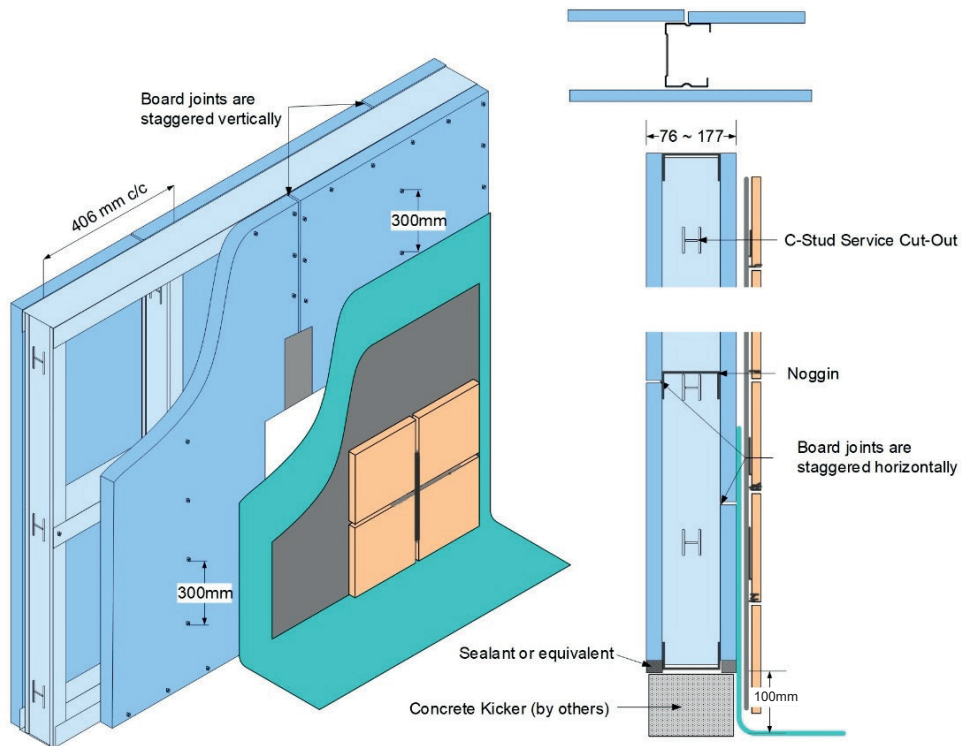
### HEALTH AND ENVIRONMENTAL CONTRIBUTIONS

- Made from 100% natural gypsum
- Recyclable material, environmentally friendly
- Green-labelled product endorsed by the Singapore Green Building Council
- Does not produce toxic fumes or hazardous substances that are harmful to health

### QUALITY ASSURANCE

- Product is manufactured in a facility certified to ISO 14001, ISO 45001, ISO 9001

A complete Saint-Gobain wet area solution with Gyproc AQUA Wall System and Weber waterproofing, tile adhesive and sealant solutions.



### Gyproc AQUA Wall System (1 Hour Fire-Rated)

Parameters	Values
Duty Rating (BS 5234: Part 2)	Severe
Fire Rating (BS 476: Part 22)	1 Hour

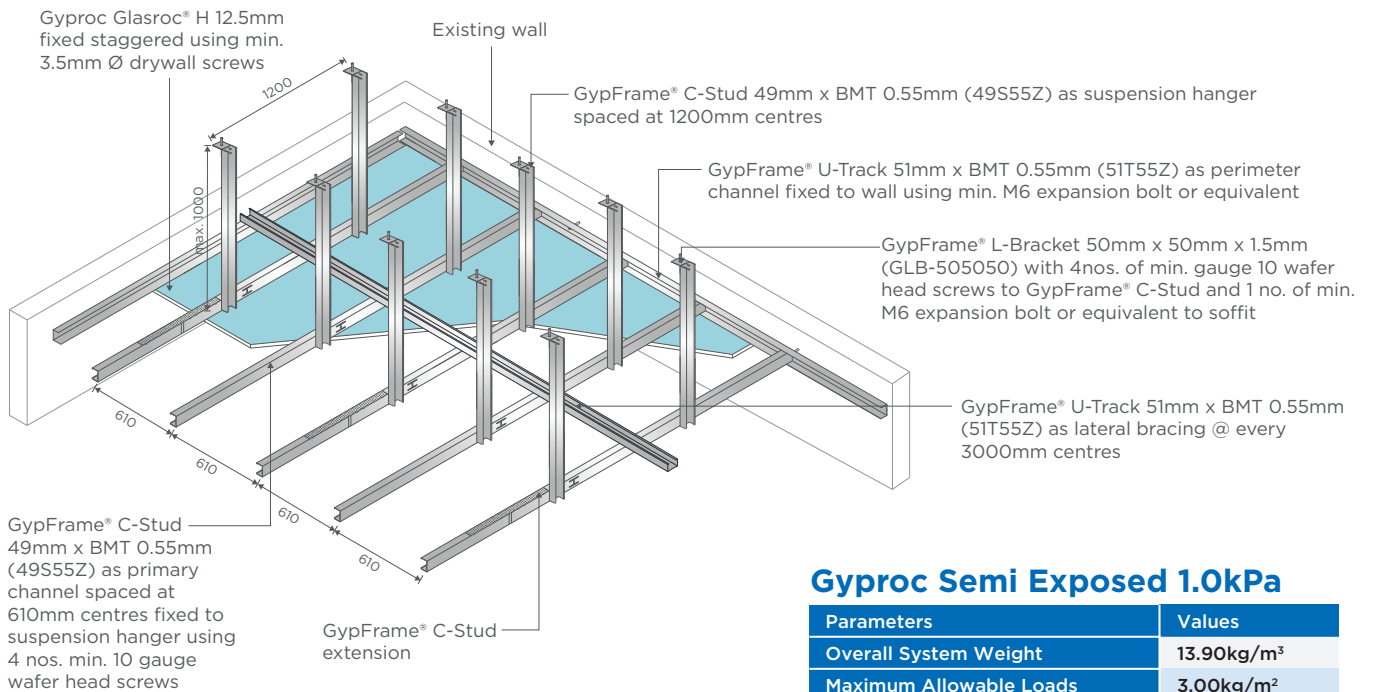
### Gyproc AQUA Wall System (2 Hour Fire-Rated)

Parameters	Values
Duty Rating (BS 5234: Part 2)	Severe
Fire Rating (BS 476: Part 22)	2 Hours



## Gyproc AQUA Ceiling System

A seamless ceiling system with superior moisture-resistant properties, suitable for internal or semi-exposed areas such as terraces, balconies, roof eaves, and similar applications prone to high moisture, water splash exposure, and wind loading.



### Gyproc Semi Exposed 1.0kPa

Parameters	Values
Overall System Weight	13.90kg/m <sup>3</sup>
Maximum Allowable Loads	3.00kg/m <sup>2</sup>
Recommended Ceiling Drop	≤ 1.00m

*\*For ceiling drops exceeding 1m or designs other than 1kPa, please contact Gyproc for recommendations.*



# Glasroc<sup>®</sup> H

*A water barrier, not a time barrier*

*Ideal for environments with frequent moisture and humidity exposure, such as shower enclosures, bathrooms, and swimming pool halls with controlled ventilation.*

**Disclaimer:**

The images provided are for reference only. Kindly obtain confirmation from Gyproc's Technical Support Personnel before submission of specification for any project. The information in this literature is accurate at the time of publishing. The publisher reserves all rights to revise the product specifications without prior notice. It is the user's responsibility to ensure that the information communicated here is current before use and that the information provided here is for guidance only. Users must ensure that they are fully conversant with the products and systems before specification or installation.



**SAINT-GOBAIN MALAYSIA SDN. BHD.** (636775-T)  
No 1 Jalan Sultan Mohamad 4,  
Kawasan Perindustrian Bandar Sultan Suleiman,  
42000 Port Klang, Selangor D E, Malaysia.

+603 3169 5588 +603 3169 5688  
[www.saint-gobain.my](http://www.saint-gobain.my)



**SAINT-GOBAIN (SINGAPORE) PTE. LTD.**  
2 Venture Drive,  
#13-18 Vision Exchange,  
Singapore 608526.

+65 6330 8288 +65 6330 8289  
[www.saint-gobain.sg](http://www.saint-gobain.sg)