

Solutions

FAÇADE

prima is a global leader in fibre cement building materials, manufactured in Malaysia. PRIMA products are versatile for application in various construction styles; whatever the design, the strength and durability of PRIMA will last for many years to come.

Superior Performance

prima makes an excellent choice for Façade application as it is highly durable, will not burn, is resistant to moisture, rotting and warping.

prima boards' superior weather resistance, termite resistance and anti-mold & fungus properties are perfectly suited for exterior application in all climates.

Easy Construction and Design

The composite construction method employed in the application of **prima** product makes the construction process fast and simple compared to traditional methods. The versatile material suits a wide range of architectural styles, from classic and traditional to ultra-modern and contemporary.

prima boards come in various format that can be cut to size easily. The sheets are ready to be painted once installed, providing great aesthetic flexibility and ease of future maintenance.

Quality Assurance

prima fibre cement products are manufactured in Malaysia in an ISO 9001, and ISO 14001 certified manufacturing plant that is 100% asbestos free. The brand is distributed in more than 30 countries with strict adherence to each country's local standards.

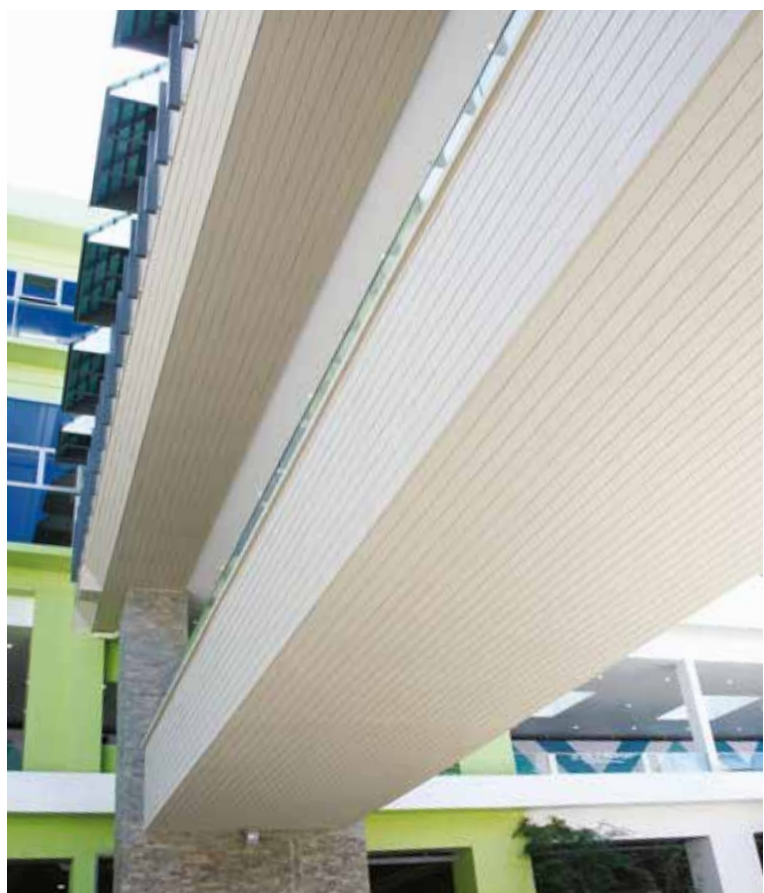
prima products are backed by a 10 year warranty and had been tested for 50 year durability.

Fire Safety

prima products are certified by the Fire & Rescue Department of Malaysia as a material with surface of no flame spread (Class-O), complying to BS 476: part 6: 1989 and BS 476: Part 7 :1997.

Sustainability

prima fibre cement boards are manufactured from natural and recyclable materials - Portland cement, Silica and Cellulose fibre, that are cured and stabilised in an autoclave. The product meets green building requirements and holds an Environmental Product Declaration according to ISO 14025.



Large Format fibre cement flat sheets that gives unparalleled design flexibility where the only limit is one's imagination.



Sports complex



Educational institution

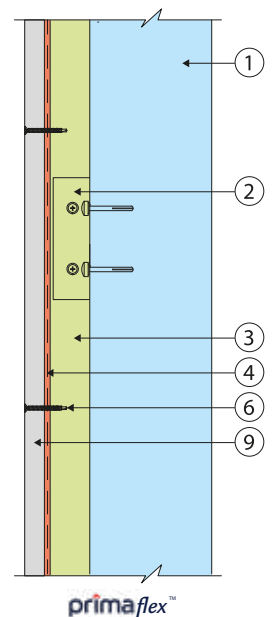
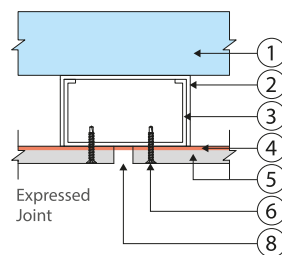
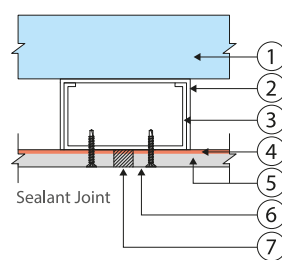
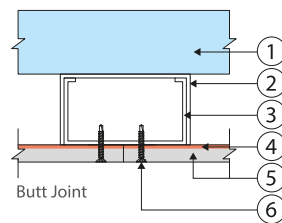


Car showroom



Office building

Fixing detail



- 1 General wall
- 2 100mm length light gauge galvanised steel U-channel
- 3 Light gauge galvanised steel C-channel

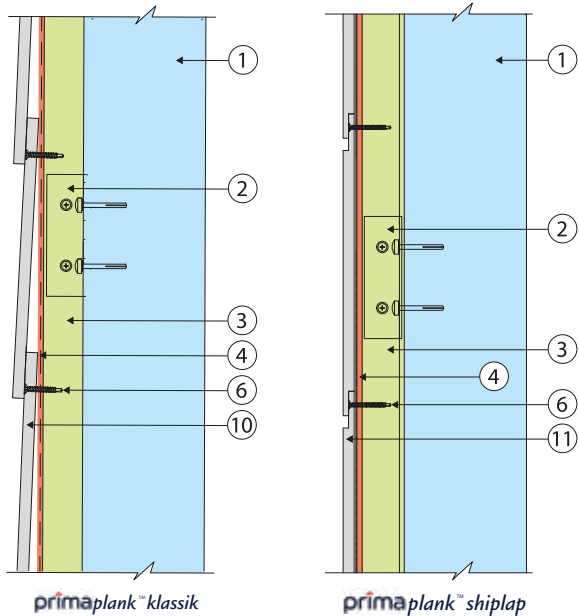
Designed to stimulate traditional timber cladding aesthetics. **primaplank™** can be painted, or stained, to create the desired look.



Commercial building



Private residential



- 4 Vapour barrier
- 5 Façade board (Prima flex or Prima Plank)
- 6 Prima fastener - Wing tek screw
- 7 Flexible sealant
- 8 3 – 6mm gap for expressed joint
- 9 Prima Flex
- 10 Prima Plank Klassik
- 11 Prima Plank Shiplap

Note: The above diagrams are for illustration purposes only.
For detailed specifications and advice on external building facade using PRIMA products, Please consult with Saint-Gobain Prima Technical Department.



Product Information

primaflex™ for façade application

Width (mm)	Length (mm)	Thickness (mm)		
		9	12	16
1220	2440	•	•	•

Refer to Prima Flex brochure for full range of sizes.

primaplank™ klassik

Edge detail	Texture	Sheet size (mm)		Thickness (mm)		
		Width	Length	7.5	9	12
Square edge	Smooth	230	3660	•	•	•
	Woodgrain			•	•	•
	Timbergrain			•	•	•
	Smooth	230	4200	•	•	
	Woodgrain			•		

primaplank™ shiplap

Edge detail	Texture	Sheet size (mm)		Thickness (mm)
		Width	Length	9
Lap edge	Smooth	230	3660	•
	Woodgrain			•

Properties	Values
Product Composition	<ul style="list-style-type: none"> • Top Grade Cellulose Fibre • Finely Ground Sand • Portland Cement • Water
Nominal Density	EMC= 1390kg/m³
Moisture Content	EMC= 7% Saturation = 33%
Moisture Movement	0.08% (EMC to Saturated)
Minimum Bending Strength, MoR	Dry = 14MPa ; Wet = 7MPa
Average Modulus of Elasticity, MoE	Dry = 8GPa ; Wet = 5GPa
Fire Rating	Class O Material (Certified by Bomba) Tested to BS 476, Part 6: 1989 & BS 476, Part 7: 1997
Fungus Resistance	Passes (ASTM G21)
Termite Resistance	Resistance to Damage (Field evaluation conducted by CSIRO)
Frost Resistance	Passed (AS/NZS2908.2, MS 1296, ISO 8336, BSEN 12467, ASTM C1186)
Heat Rain Resistance	Passed (AS/NZS2908.2, MS 1296, ISO 8336, BSEN 12467, ASTM C1186)
Surface Rating	Pre-Primed Available
Thermal Conductivity, k Value (Mean temperature of 41.93°C)	0.24W/mK

In Construction

primaflex™ as building envelop

Advantages :

- Lightweight façade
- Superior flatness
- Dry & Fast construction
- Minimal defect
- Easy to paint



prima solutions

prima fibre cement products are used extensively for a wide range of building applications.

We are here to provide you the full support and knowledge to ensure the success of your next project.

Feel free to contact our support team to guide you through your design.



 MyHP00175/16	 041-026 MADE FROM RECYCLED MATERIALS	 SIRIM ECO-LABEL License No. ELH0000001	 SIRIM CERTIFIED TO MS 1296 : 2010 Certification No. PH 000005	 SIRIM CERTIFIED TO ISO 9001:2008 CERT. NO. : AR0430	 SIRIM CERTIFIED TO ISO 14001:2004 CERT. NO. : ER0642	 SIRIM CERTIFIED TO OHSAS 18001:2007 CERT. NO. : SR 0330	 SIRIM Certified to MS 1296 & ISO 8336 Cert. No. PH000605 & PH000613	
 Termite Resistant	 Fire Resistant	 Water Resistant	 Weather Resistant	 100% Asbestos free	 Superior Paint Adhesion	 High Workability	 Aesthetically Pleasing	 50 Years Durability

For more information, please contact us at:



SAINT-GOBAIN PRIMA SDN BHD (579898-W)

Level 19, Tower 5, Avenue 7 The Horizon,
Bangsar South City, No. 8, Jalan Kerinchi,
59200 Kuala Lumpur, Malaysia

General Line 1: +603 7781 1977 | General Line 2: +6012 781 1797

www.primafibrecement.com | www.saint-gobain.my

 [saintgobainprima](#)