

weberdry BITU coat

High Performance Elastic Bitumen Waterproofing



weberdry BITU coat is a single component, bitumen base waterproofing compound. It is designed for reinforced concrete structures such as retaining walls, lift pits, pile caps, ground beams, etc. against penetration of salty ground water and acidic soils

PRODUCT BENEFITS



USES

- Underground Structures
- Pile caps
- Ground beams
- Retaining walls
- Lift pits
- RC pipes
- Box culverts
- Man holes

TECHNICAL DATA & PHYSICAL PROPERTIES

| | |
|----------------------------|--|
| Colour | Black |
| Density | 1.8kg/l at 23°C |
| Shelf Life | 12 months from date of production |
| Service Temperature | Between 5°C and 40°C at normal ambient temperature |
| Storage Temperature | Between 5°C to 35°C |
| Substrate | No standing water/condensation on the substrate to be coated |
| Air Humidity | Maximum 80% RH |
| Dew point | Surface temperature must be +3°C above the dew point |
| Over coat time | 6 - 12 hours |
| Curing Time | 2 - 4 days |
| Standard System | |
| Priming Coat | 0.35 kg/m ² (Dilute the product with 10% clean potable water) |
| 1st Coat | 0.7 kg/m ² |
| 2nd Coat | 0.7 kg/m ² |
| Improved System | |
| Priming Coat | 0.35 kg/m ² (Dilute the product with 10% clean potable water) |
| 1st Coat | 0.7 kg/m ² |
| Reinforcement | 1 layer webertape fibermesh 100 |
| 2nd Coat | 0.7 kg/m ² |
| 3rd Coat | 0.7 kg/m ² |
| Pull-Off Adhesion Strength | > 0.5 N/mm ² |
| ASTM D7234 | |

SAINT-GOBAIN WEBER (M) SDN BHD

No 29 & 31, Jalan TIAJ 2/1, Taman Industri Alam Jaya, 42300 Bandar Puncak Alam, Selangor D E, Malaysia



(603) 60389498/97/89



(603) 6038 9507



info.webermalaysia@saint-gobain.com



www.saint-gobain.my

weberdry BITU coat

High Performance Elastic Bitumen Waterproofing

FEATURES AND BENEFITS

- Eco-friendly with a low VOC
- Ultra-high bonding/elastic properties designed for superior crack-bridging properties
- Easy application to minimize on site application errors
- Concrete protection against acidic soils/salty ground waters

PROCEDURE & APPLICATION



Surface Preparation

New concrete should be cured for at least 28 days and should have a pull off strength ≥ 1.5 N/mm². Cement or mineral based substrates must be prepared mechanically using abrasive blast cleaning or scarifying equipment to remove cement laitance and to achieve an open textured surface. Loose friable material and weak concrete must be completely removed and surface defects such as blowholes and voids must be fully exposed. Protrusions of more than 3mm must be removed. All intersections of horizontal and vertical surfaces should be profiled with a mortar fillet of 25 x 25 mm.

Constraints

Do not apply on substrates with rising moisture. Always apply during falling ambient and substrate temperature. If applied during rising temperatures pin holes may occur from rising air. Ensure that temperature does not drop below 8°C and that relative humidity does not exceed 80% until the membrane has fully cured. Ensure that the coating is thoroughly dry and the surface is without pinholes before applying any top coat. Do not allow temporary ponding to remain between coats on any horizontal surfaces or until the final coating has totally cured. Brush or mop off any surface water during this time. Do not apply on roofs subject to long-term water ponding with subsequent periods of frost. In cold climatic zones for roofing structures with a pitch of less than 3% appropriate measures must have to be considered. Do not apply directly on insulation boards. Not recommended for high pedestrian traffic. In case pedestrian traffic is unavoidable, it shall be covered with appropriate elements such as tiles, stone plates or wooden panels.



Application

Prior the application of **weberdry BITU coat**, all corners or possible weak areas must be treated with application of **webertape fibermesh 100**.
weberdry BITU coat

Improved System:

weberdry BITU coat is applied with the reinforcement of **webertape fibermesh 100** to enhance the waterproofing system

- Apply primer (~0.35 kg/m²) of **weberdry BITU coat** (Dilute the product with 10% clean potable water)
- Apply 1st coat (~0.7 kg/m²) of **weberdry BITU coat** after 1 - 2 hours of primer coat
- Apply 2nd coat (~0.7 kg/m²) of **weberdry BITU coat** then roll in **webertape fibermesh 100** and ensure that there are no bubbles or creases. Overlapping of **webertape fibermesh 100** at minimal 5cm. It is highly recommended to carry out just 1m² per time for a lesser experienced application. Apply 4 - 6 hours after 1st layer
- Apply final coat (~0.7 kg/m²) of **weberdry BITU coat**. Rule of thumb is to have sufficient materials to embed **webertape fibermesh 100** (or polyester fleece). Surface should be smooth after application. Apply 12 to 24 hours after the 2nd layer

weberdry BITU coat

High Performance Elastic Bitumen Waterproofing

Standard System:

weberdry BITU coat is applied without reinforcement

- Apply primer (~0.35 kg/m²) of weberdry BITU coat +10% water or apply primer (~0.2kg/m²) for wet rooms
- Apply 1st coat (~0.7 kg/m²) of weberdry BITU coat with proper tools, apply 1 - 2 hours after primer coat
- Apply final coat (~0.7 kg/m²) of weberdry BITU coat after 4 - 6 hours of 1st coat

PROCEDURE & APPLICATION



Curing

The waterproofing must not become wet while it is still curing. It should be protected from direct sunlight, rain or pedestrian traffic. 4 days of natural air curing is normally sufficient however 7 days is recommended for over coating with other cementitious materials such as screed and tile adhesive. Water ponding tests can be carried out after 4 days curing

COVERAGE

Improved system Approx. : 8m² per 20kg plastic pail

Standard system Approx. : 11.5m² per 20kg plastic pail

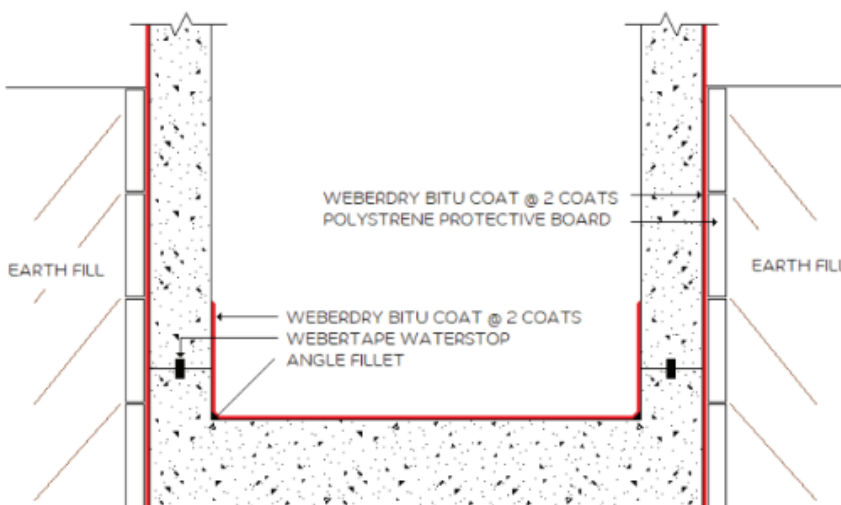
STORAGE & PACKING

20kg plastic pails / 200kg drums

At least 12 months, when stored in dry conditions of normal ambient temperature between 5°C - 35°C

HEALTH & SAFETY

For information and advice on the safe handling, storage and disposal of chemical products, users shall refer to the most recent Safety Data Sheet containing physical, ecological, toxicological and other safety-related data



TYPICAL LIFT PIT AREAS



*Note Because it is not possible to give specific instructions for the various site conditions or to control the applications, the information on this Technical Data Sheet is for general guidance only. Saint-Gobain Weber (M) Sdn Bhd reserves the rights to amend the contents of the data sheet at its sole discretion. (Feb '24)



SAINT-GOBAIN WEBER (M) SDN BHD

No 29 & 31, Jalan TIAJ 2/1, Taman Industri Alam Jaya, 42300 Bandar Puncak Alam, Selangor D E, Malaysia

(603) 60389498/97/89 (603) 6038 9507 info.webermalaysia@saint-gobain.com www.saint-gobain.my