

weberfloor 500

Two Component, Flexible Cementitious Waterproofing Slurry



weberfloor 550 is a machine or hand applied self-levelling floor surfacing system formulated from special cement, aggregates, supplementary binders and chemical additives. weberfloor 550 is designed as a smooth underlayment for use on epoxy coating. Under normal condition, access onto the floor is available after 2 - 3 hours. Provided that the substrate is suitably dry, the final flooring can be laid after 24 hours (for a 10mm layer). The product is supplied as a pre-blended, dry powder designed for application at thickness of 4 - 10mm in one operation. Normal application thickness is 6 - 10mm. weberfloor 550 does not contain casein or other protein bearing additives, making it particularly suitable for the use in hospitals, food preparation areas and storage areas.

PRODUCT BENEFITS



EASY APPLICATION

USES

- Residential and commercial flooring
- Hospitals, schools, sports stadium and theatres and more
- Smooth underlayment to receive vinyl sheet, carpet and other finishings

TECHNICAL DATA & PHYSICAL PROPERTIES

Colour	Grey
Max. Aggregate Size	0.5mm
Water Demand	Approx. 20 - 22% (5 - 5.5L/25kg bag)
Density	1.3kg/L (Dry) 2.0kg/L (Wet) for 21% water demand
Thickness	4 - 10mm
Time for Foot Traffic	2 Hours
Coverage	Approx. 1.7kg/m ² /mm
Theoretical Consumption	Approx. 10.2kg/m ² for thickness of 6mm Approx. 2.5m ² /25kg bag for thickness of 6mm
Adhesion to Concrete	≥ 1.5N/mm ²
EN 13892 - 8	
Compressive Strength	1 day > 13 N/mm ² 3 days > 16 N/mm ² 7 days > 20 N/mm ² 28 days > 30 N/mm ²
EN 13892 - 2	
Flexural Strength	> 7 N/mm ²
EN 13892 - 2	
Abrasion Resistance	RWFC 350
Rolling Wheel Abrasion	
EN 13892 - 7	
Flow Ring Test	> 130 mm
EN 13813	
Free Shrinkage	≤ 0.05%
EN 13454 - 2	
pH value	10 - 11
EN 12859	

weberfloor 500

Two Component, Flexible Cementitious Waterproofing Slurry

FEATURES AND BENEFITS

- Rapid hardening: available for foot traffic after 2 hours
- Good abrasion resistance
- Very low shrinkage to prevent cracking
- High compressive strength
- Water & Chemical Resistance
- Can apply vinyl sheet, carpet and tiling directly
- Environmental friendly

PROCEDURE & APPLICATION



Surface Preparation

A level survey of the existing surface is recommended prior to the application of **weberfloor 550**. The surface to be treated must be hard, sound and free from surface contamination. The tensile strength of the substrate should be minimum 1.0N/mm². All dust and debris should be vacuumed from the surface. Weak or soft substrates, such as asphalt, which may be subject to movement under imposed load (either in use or during material curing), must be removed. Concrete contaminated by oil or grease may require flame gunning and/or treatment with a proprietary degreaser. Contraction joints and cracks in the substrate which may be subject to movement after installation of **weberfloor 550** must be maintained as joints in the new surface.

Constraint

Do not apply on substrates with rising moisture. Always apply during falling ambient and substrate temperature. If applied during rising temperatures pinholes may occur from rising air. Ensure that temperature does not drop below 8°C and that relative humidity does not exceed 80% until the Membrane has fully cured. Ensure that the coating is thoroughly dry and free of pinholes before applying next layer. Do not allow temporary ponding to remain between coats on any horizontal surfaces or until the final coating has totally cured. Brush or mop surface water away during this time. Do not apply directly on insulation boards.



Application

Substrate should be firstly primed by brushing diluted **webermix SBR** with clean, potable water at the ratio of 1:5 for the first coat and 1:3 for the second coat. Allow the first coat of primer to become tacky and dry before applying the second coat. After second coat of primer, wait for it to become tacky and dry before applying **weberfloor 550**. Mix a bag of dry mix powder (25kg) with 5 - 5.5 L (20 - 22%) water by using an electric mixer for 3 - 4 minutes. Hand application: Apply **weberfloor 550** on primed substrate and under working condition above +10°C. For continuous application, adequate mixing of material is necessary. **weberfloor 550** can be applied by a trowel or steel spatula. Machine application: Adjust the flow rate of the machine until a smooth and homogenous mixture obtained without segregation. A flow ring with volume of 35cm³ can be applied to check the spreading of mixture, whose diameter should be equal or greater than 130mm. **weberfloor 550** is pumped onto the surface through the discharge hose, which is moved across the substrate surface at a constant pace for screed with uniform thickness. The required thickness must be achieved in one operation. The best performance can be achieved when pouring and levelling are done in a continuous process. The freshly applied material can be gently trowelled with a steel spatula to dissipate lines left by the hose. The semi-hardened material may be formed easily or cut for any necessary adjustments. Finishing such as epoxy coating, vinyl sheets and carpet can be applied 24 hours after curing. The relative humidity of the surrounding air should be below 70%. Light ventilation during and after laying is recommended, but dehumidifiers should not be used for the first 2 days. Curing membranes are not required.

*Note Because it is not possible to give specific instructions for the various site conditions or to control the applications, the information on this Technical Data Sheet is for general guidance only. Saint-Gobain Weber (M) Sdn Bhd reserves the rights to amend the contents of the data sheet at its sole discretion. (Feb '24)



SAINT-GOBAIN WEBER (M) SDN BHD

No 29 & 31, Jalan TIAJ 2/1, Taman Industri Alam Jaya, 42300 Bandar Puncak Alam, Selangor D E, Malaysia

(603) 60389498/97/89 (603) 6038 9507 info.webermalaysia@saint-gobain.com www.saint-gobain.my

weberfloor 500

Two Component, Flexible Cementitious Waterproofing Slurry

PROTECTION

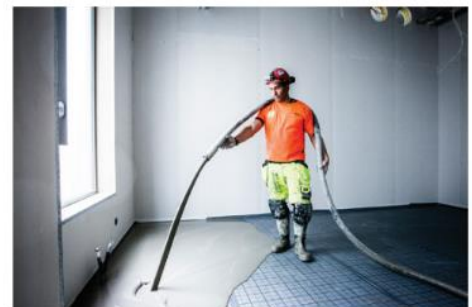
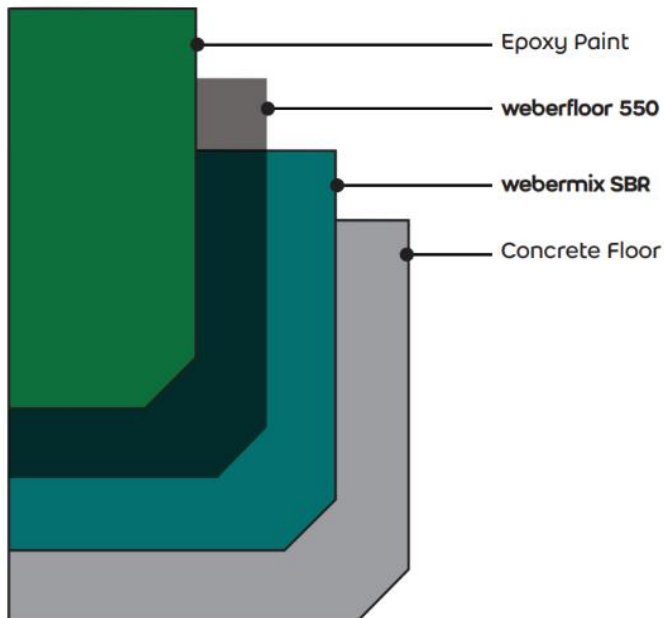
PROTECTION :
 weberfloor 550 should always be protected to avoid damages caused by other trades working and keep out of reach of children.

COVERAGE

Approx. 10.2kg/m² for thickness of 6mm
 Approx. 2.5m²/25kg bag for thickness of 6mm

PACKING & SHELF LIFE

25KG
 12 months if stored in a dry place.



*Note Because it is not possible to give specific instructions for the various site conditions or to control the applications, the information on this Technical Data Sheet is for general guidance only. Saint-Gobain Weber (M) Sdn Bhd reserves the rights to amend the contents of the data sheet at its sole discretion. (Feb '24)

