

DuraLine® PLUS

A high impact-resistant gypsum plasterboard with a high density core that contains glass fibres and fumed silica, which is encased and firmly bonded to strong paper liners.



LEADER
SGB 3368

Used in the Gyproc Gypwall® ROBUST system, DuraLine® PLUS is suitable for walls requiring impact resistance and a durable surface, such as residential buildings, schools, recreational facilities, hospitals, other institutional buildings, public circulation areas of commercial buildings, hotels, and industrial premises.

DuraLine® PLUS is also available in a moisture-resistant variant known as DuraLine® MR.

CHARACTERISTICS

Gypsum plasterboard with a higher density mass core with glass fibre and fumed silica, and is encased and firmly bonded to durable paper liners. Achieves a severe duty rating in a single boarded partition system and satisfies BS 5234: Part 2 for strength and robustness requirements.

RECOMMENDED USE

Suitable for walls that require impact resistance.

PRODUCT FORMAT

Thickness	16mm	19mm
Nominal Weight	14.50kg/m ²	17.10kg/m ²
Nominal Sheet Size	1220mm x 2440mm	
Edge Type	Recessed Edge 	

FIRE RATING

- Non-combustible in accordance to BS 476: Part 4
- Low fire propagation in accordance to BS 476: Part 6
- Class 1 surface spread of flame in accordance to BS 476: Part 7
- Classified as Class 0 material in accordance to BS 476: Part 6 & 7
- Complete GypWall system providing up to 4 hours fire rating in accordance to BS 476: Part 22

THERMAL INSULATION

- Recommended design thermal conductivity, k-value 0.18 W/m.K

MANUFACTURING SPECIFICATIONS

- In compliance with ASTM C1396M and BS EN 520

AESTHETIC PROPERTIES

- Crack-free
- Seamless and smooth finishing

HEALTH AND ENVIRONMENTAL CONTRIBUTIONS

- Made from 100% natural gypsum
- Recyclable material, environmentally friendly
- Green-labelled product endorsed by the Singapore Green Building Council
- Does not produce toxic fumes or hazardous substances that are harmful to health

QUALITY ASSURANCE

- Product is manufactured in a facility certified to ISO 14001, ISO 45001, ISO 9001

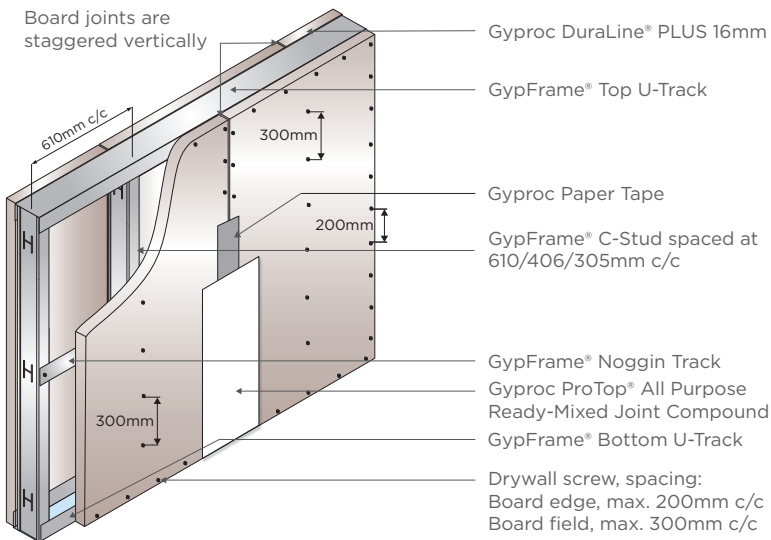




Gyproc ROBUST Wall System

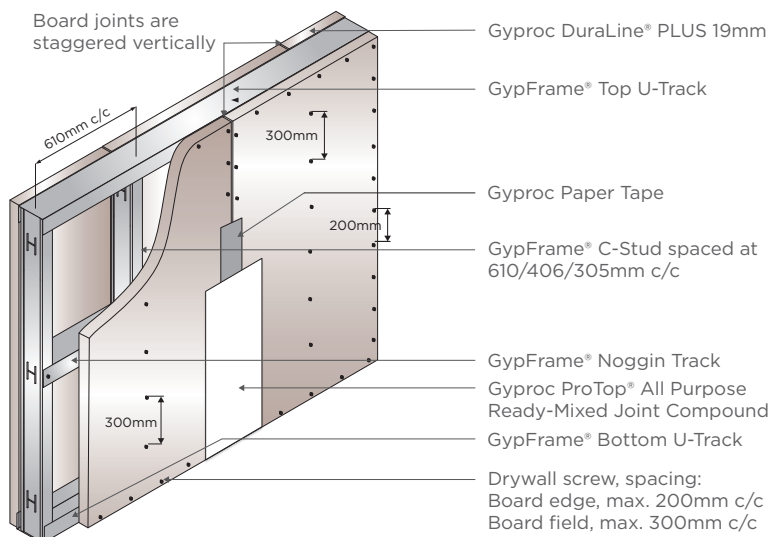
Specially designed impact-resistant partition system that offers a superior performance alternative to traditional brick walls, this highly durable internal partition system is ideal for homes and high-traffic commercial areas where strong and robust walls are required.

Gyproc ROBUST Wall System (1 Hour Fire-Rated)



GypWall® ROBUST 16DP.1HR

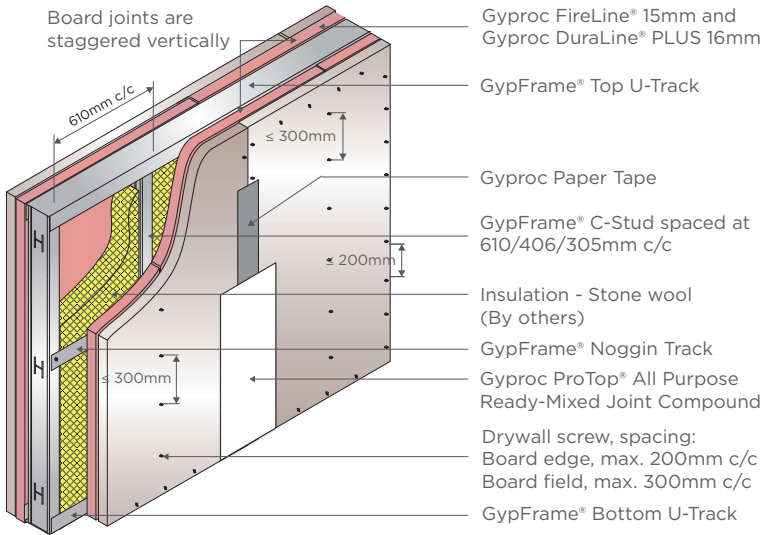
Parameters	Values
Duty Rating (BS 5234: Part 2)	Severe
Fire Rating (BS 476: Part 22)	1 Hour



GypWall® ROBUST 19DP.1HR

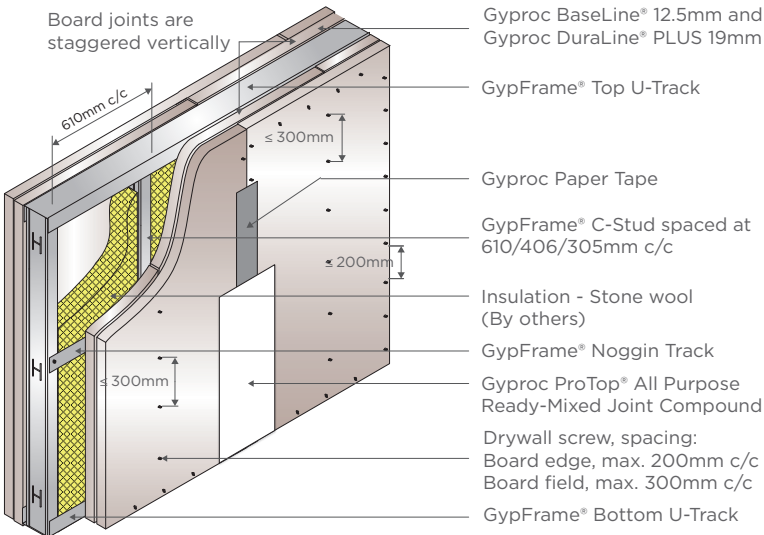
Parameters	Values
Duty Rating (BS 5234: Part 2)	Severe
Fire Rating (BS 476: Part 22)	1 Hour

Gyproc ROBUST Wall System (2 Hour Fire-Rated)



GypWall® ROBUST 15FL16DP.SW.2HR

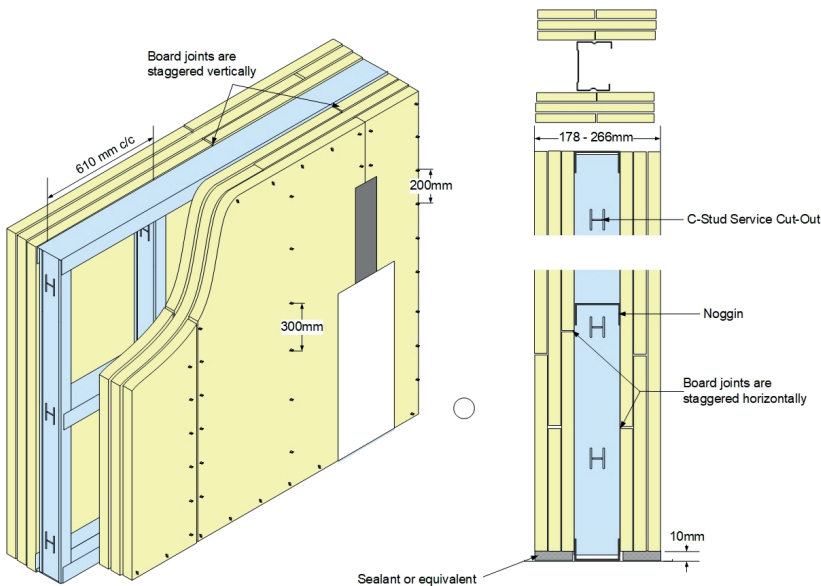
Parameters	Values
Duty Rating (BS 5234: Part 2)	Severe
Fire Rating (BS 476: Part 22)	2 Hours



GypWall® ROBUST BL19DP.SW.2HR

Parameters	Values
Duty Rating (BS 5234: Part 2)	Severe
Fire Rating (BS 476: Part 22)	2 Hours

Gyproc® ROBUST Wall System (4 Hour Fire-Rated)



GypWall® ROBUST 19DP.4H

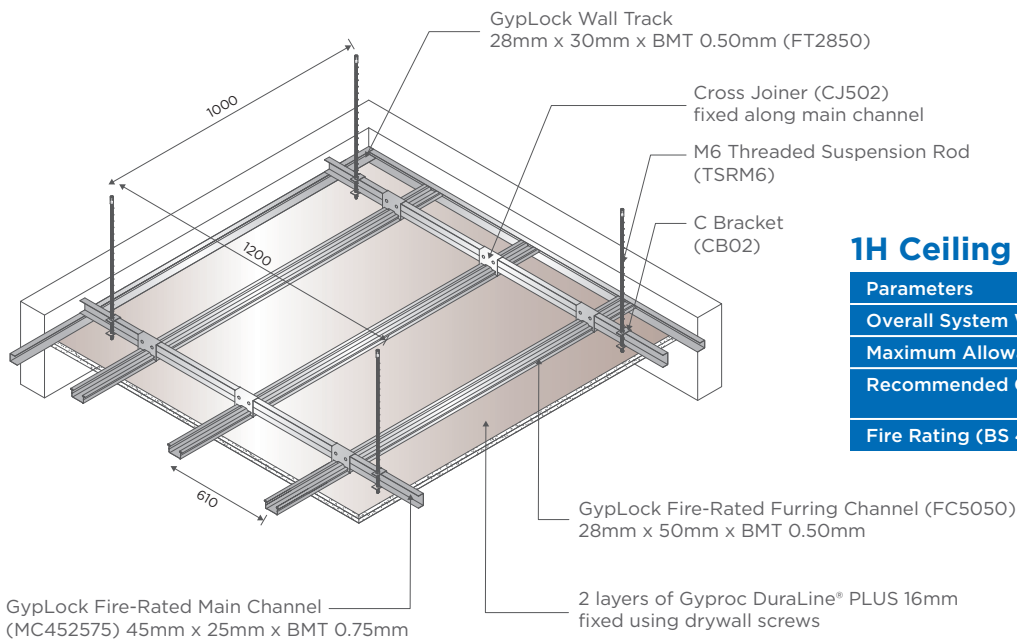
Parameters	Values
Duty Rating (BS 5234: Part 2)	Severe
Fire Rating (BS 476: Part 22)	4 Hours



Gyproc Fire-Rated Ceiling System

One of the many Gyproc fire-rated ceiling systems that use DuraLine® PLUS provides up to a 1-hour fire rating, tested and certified by local authorities. This system ensures enhanced safety and peace of mind for both residential and commercial buildings.

Gyproc Fire-Rated Ceiling System (1 Hour Fire-Rated)



1H Ceiling DLDP16

Parameters	Values
Overall System Weight	34.00kg/m ²
Maximum Allowable Loads	3kg/m ²
Recommended Ceiling Drop	>1.50m up to 3.00m
Fire Rating (BS 476: Part 22)	1 Hour

Disclaimer:
The images provided are for reference only. Kindly obtain confirmation from Gyproc's Technical Support Personnel before submission of specification for any project. The information in this literature is accurate at the time of publishing. The publisher reserves all rights to revise the product specifications without prior notice. It is the user's responsibility to ensure that the information communicated here is current before use and that the information provided here is for guidance only. Users must ensure that they are fully conversant with the products and systems before specification or installation.



SAINT-GOBAIN MALAYSIA SDN. BHD. (636775-T)
No 1 Jalan Sultan Mohamad 4,
Kawasan Perindustrian Bandar Sultan Suleiman,
42000 Port Klang, Selangor D E, Malaysia.
☎ +603 3169 5588 📠 +603 3169 5688
🌐 www.saint-gobain.my



SAINT-GOBAIN (SINGAPORE) PTE. LTD.
2 Venture Drive,
#13-18 Vision Exchange,
Singapore 608526.
☎ +65 6330 8288 📠 +65 6330 8289
🌐 www.saint-gobain.sg

