

# ThermaLine®

*A high-quality gypsum board laminated with a layer of thermal and sound insulation material on the reverse.*

**ThermaLine® is the ideal solution for enhancing thermal and sound insulation properties. Whether used in new constructions or retrofitted into existing buildings, it provides an effortless way to create a sustainable environment that is both energy-efficient and soundproof, ensuring optimal indoor comfort.**

**ThermaLine® effectively blocks external heat, reducing the loss of cool air from within the building and consequently lowering energy consumption for air conditioning.**


## CHARACTERISTICS

Aerated gypsum core encased in, and firmly bonded to durable paper liners. A fire-retardant expanded insulant is then additionally bonded to the finished plasterboard.

## RECOMMENDED USE

For spaces requiring enhanced thermal and sound insulation, it offers internal drylining as well as thermal and sound insulation in one easy installation.

## PRODUCT FORMAT

Thickness	37.5mm
Nominal Weight	8.00kg/m <sup>2</sup>
Nominal Sheet Size	1220mm x 2440mm
Edge Type	Recessed Edge 

## FIRE RATING

- Non-combustible in accordance to BS 476: Part 4
- Low fire propagation in accordance to BS 476: Part 6
- Class 1 surface spread of flame in accordance to BS 476: Part 7
- Classified as Class 0 material in accordance to BS 476: Part 6 & 7

## THERMAL INSULATION

- Thermal resistance (R): 0.75 sqm·K/W \*
- Low thermal convection (U): 1.325 K/W \*

\*Varies on thickness

## MANUFACTURING SPECIFICATIONS

- In compliance with ASTM C1396M and BS EN 520

## AESTHETIC PROPERTIES

- Crack-free
- Seamless and smooth finishing
- Easily decorated with paint

## HANDLING AND WORKABILITY

- Lightweight
- Quick and easy installation

## HEALTH AND ENVIRONMENTAL CONTRIBUTIONS

- Made from 100% natural gypsum
- Recyclable material, environmentally friendly
- Does not produce toxic fumes or hazardous substances that are harmful to health

## QUALITY ASSURANCE

- Product is manufactured in a facility certified to ISO 14001, ISO 45001, ISO 9001



THERMAL INSULATION



ACOUSTIC PERFORMANCE



ENERGY EFFICIENCY



ECO FRIENDLY



PRODUCTIVITY GAIN



STABILITY



RECYCLING CERTIFIED



INSPIRING SPACES

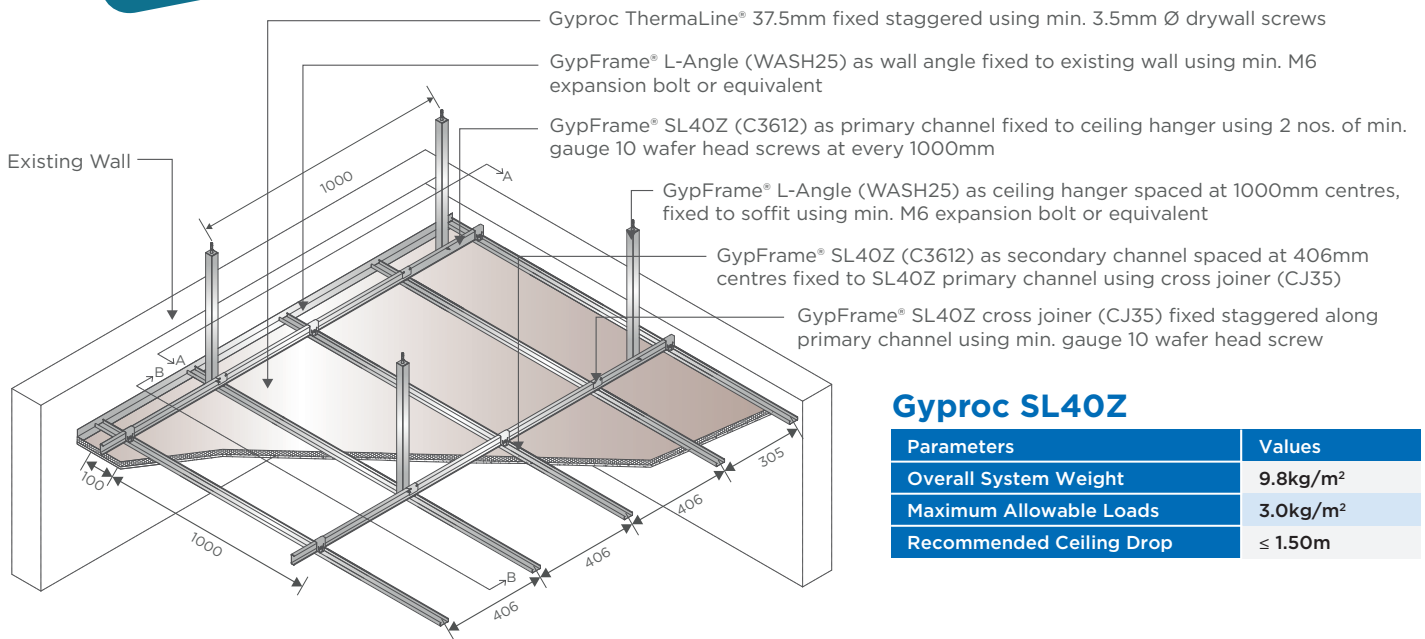


AESTHETIC & DESIGN



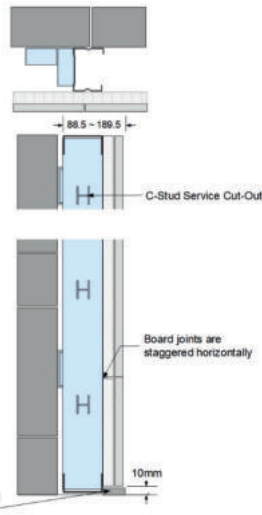
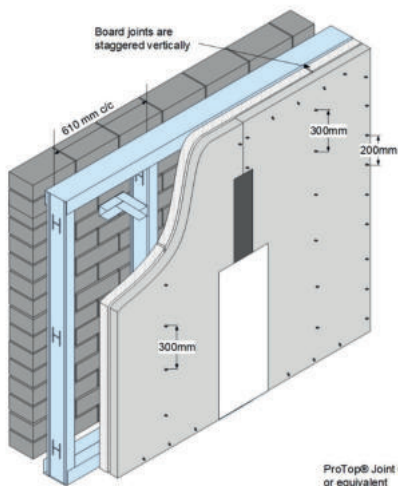
## Gyproc Thermal & Sound Insulation

The perfect way to enhance thermal and sound insulation properties, creating sustainable spaces that are energy-efficient and sound-insulated for optimal indoor comfort.



### Gyproc SL40Z

Parameters	Values
Overall System Weight	9.8kg/m <sup>2</sup>
Maximum Allowable Loads	3.0kg/m <sup>2</sup>
Recommended Ceiling Drop	≤ 1.50m



### Gyproc ThermaLine Wall Lining System

Parameters	Values
Duty Rating (BS 5234: Part 2)	Medium

**Disclaimer:**  
The images provided are for reference only. Kindly obtain confirmation from Gyproc's Technical Support Personnel before submission of specification for any project. The information in this literature is accurate at the time of publishing. The publisher reserves all rights to revise the product specifications without prior notice. It is the user's responsibility to ensure that the information communicated here is current before use and that the information provided here is for guidance only. Users must ensure that they are fully conversant with the products and systems before specification or installation.



**SAINT-GOBAIN MALAYSIA SDN. BHD.** (636775-T)  
No 1 Jalan Sultan Mohamad 4.  
Kawasan Perindustrian Bandar Sultan Suleiman.  
42000 Port Klang, Selangor D E, Malaysia.  
☎ +603 3169 5588 📠 +603 3169 5688  
🌐 [www.saint-gobain.my](http://www.saint-gobain.my)



**SAINT-GOBAIN (SINGAPORE) PTE. LTD.**  
2 Venture Drive.  
#13-18 Vision Exchange.  
Singapore 608526.  
☎ +65 6330 8288 📠 +65 6330 8289  
🌐 [www.saint-gobain.sg](http://www.saint-gobain.sg)

