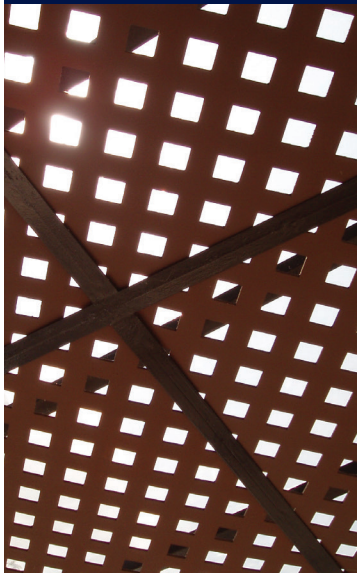


prima *lattice*™

Features



prima lattice™

Decorative Flat Sheet Screening

Perfect For Ventilation, Shade And Privacy.

prima lattice™ is an autoclaved fibre reinforced cement sheet consisting of high quality cellulose fibre, finely ground sand, portland cement and water. It serves well functionally and aesthetically for partitions and screening. It looks good standing on its own or combined with other building materials to complete that perfect aesthetic result. In today's modern homes, the stylish look of **prima lattice**™ has become increasingly popular.

With **prima lattice**™ you can create a fresh and appealing look for your gable ends, eaves and verandahs. This decorative screen can transform the dull corners of your garden into places of interest as well as provide shade to your delicate plants.

Unaffected by moisture, heat and weather **prima lattice**™ is the perfect choice when used as garden fences, surroundings for pools, spas, barbeque areas and gable ends.

Product Benefits

- Low Maintenance
- Asbestos Free
- Weather Resistant
- Fire Resistant
- Water Resistant
- Termite Resistant
- Rot Resistant
- Cost Effective
- Excellent Workability
- Aesthetically Pleasing
- Energy Saving

Material & Application Specifications

prima lattice™ is nominally 6mm thick and available in two attractive patterns - Square and Diamond.

prima lattice™

Profile		Length (mm)	Width (mm)	Thickness (mm)	Application
	Square	2400	1200	6.0	Decorative Screen
	Diamond	2400	1200	6.0	Decorative Screen



Material Properties & Composition

Properties	Values
Product Composition	<ul style="list-style-type: none"> • Top Grade Cellulose Fibre • Finely Ground Sand • Portland Cement • Water
Colour	Light Grey
Edge Details	4 Sided Square Edge
Nominal Density	EMC = 1390kg/m ³
Moisture Content	EMC = 7% Saturation = 33%
Moisture Movement	0.08% (EMC to Saturated)
Thermal Conductivity k Value (Tested at 30°C±5°C)	0.24 W/mK (ASTM C518)
Product Standard	MS 1296:2010
Fire Rating	Class O Material (Certified by Bomba) Tested to BS476.Part 6: 1989 & BS 476.Part:7, 1997)
Fungus Resistance	Passes (ASTM G 21)
Termite Resistance	Resistance to Damage (Field Evaluation Conducted by CSIRO)
Frost Resistance	Passed (AS/NZS2908.2, MS 1296)

Fastener Specification

Framing & Fixing Specifications

When **primalattice™** is fixed directly to timber framing, nails must be installed as shown in **Figure 4**. Use only galvanised fibre cement nails. Drive nail head flush with the sheet surface.

Galvanised Fibre Cement Nail



2.0mm x 30mm for softwood

2.0mm x 25mm for hardwood

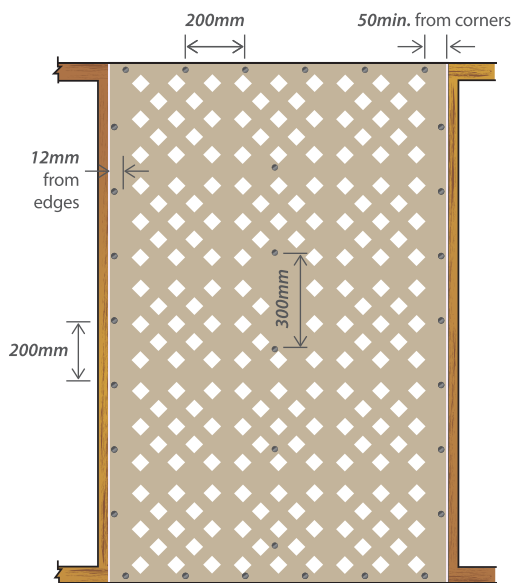
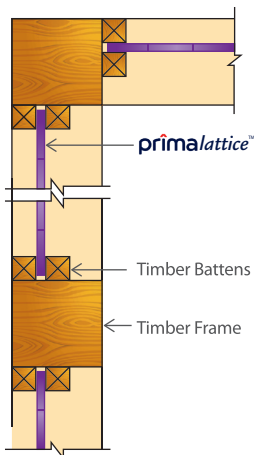


Fig. 1. Nailing Pattern

Sheet Fixing Instructions

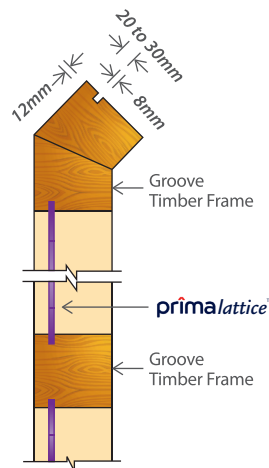
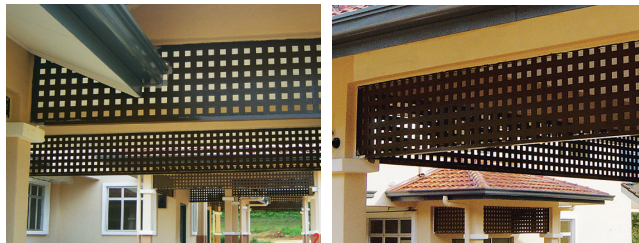
primalattice™ is normally fixed to timber frames. Use only durable hardwood or external grade treated timber.



Method 1 (Timber Batten)

1. Construct framing to suit the length or width of the **primalattice™**.
2. Nail Timber Batten flush with the external side of the Timber Frame.
3. Position the Panel against the Battens.
4. Nail Battens to Timber Frame at the other side of the panel.

Figure 2: Fixing with Battens



Method 2 (Grooved Frame)

1. Use Timber Frame with **8mm** wide x **12mm** deep grooved at the proposed panel location.
2. Fix the timber post and bottom rail of the frame in position.
3. Ensure that posts and bottom rail are in correct alignment. Check with level or plumb.
4. Slot the **primalattice™** into place and attach the top rail to lock the panel into position.

Figure 3: Fixing to Grooved Timber

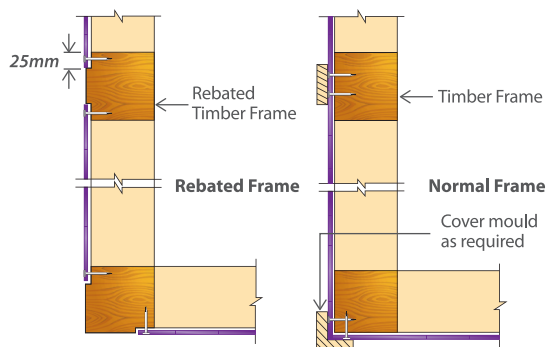


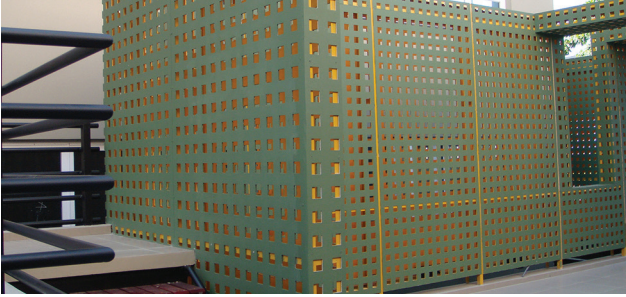
Figure 4. Nail-on Panel Fixing

Method 3 (Nail-on)

primalattice™ can be nailed directly onto normal or rebated timber frame. Fix the panels as follows:

1. Construct the primary frame with spacing to suit the sheet width and length.
2. Affix the intermediate vertical frame and horizontal rails. When using **primalattice™ Square**, intermediate framing should be situated between the square perforations.
3. Apply **primalattice™** and nail in accordance with the recommended nailing pattern. Refer **Figure 4**.

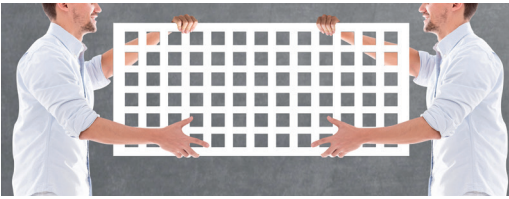
Handling & Finishing



Storage

- Store sheets neatly on a flat surface supported evenly with bearers spaced at **600mm** centres maximum, clear of the ground to avoid damage and moisture ingress.
- Store under cover and ensure sheets are dry prior to fixing. Never install damp sheets. Damp sheets must be allowed to dry to Equilibrium Moisture Content (EMC) before fixing.
- Protect edges and corners from damage on site.

Note - Floor loadings should be considered when stacking sheets.

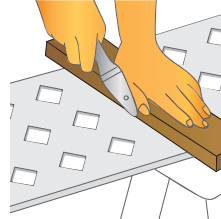


Handling

- Always ensure at least 2 persons are lifting the board at the same time in an upright position
- Do not hold near each on edge.
- Exercise care when handling **primallattice™** to avoid damaging the corners.

Cutting

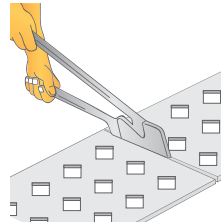
A dust mask and safety glasses should always be worn when cutting, drilling or grinding. Dry cutting with power tools should be performed in a high-ventilated area or in an open-air space using a Power-Saw fitted with Dust-Extracting attachments. A Circular Saw with dust collecting facilities should be equipped with Carbide-Tipped Teeth or a Carborundum Blade.



Score & Snapping

Any Scribing Tool or special Tungsten-Tipped Scoring Knife can be used for this method of cutting.

- Score the face of **primallattice™**, repeating the action to obtain a depth of about 1/3 of sheet thickness.
- Snap the off-cut upward to achieve cut. If necessary, trim the rough edge with a rasp.



Hand Guillotine

When using a hand guillotine, best results are obtained when the sheet and the off-cut are both fully supported.



Finishing

In order to achieve excellent aesthetic finishing, it is recommended to use 100% water-based quality Acrylic Paints. Generally a minimum of 2 coats is required. Do not use solvent-base paint. There is no need to apply Primers or Sealers. In any case, coating manufacturers' recommendation must be adhered to.



Termite Resistant



Fire Resistant



Water Resistant



Weather Resistant



100% Asbestos free



Superior Paint Adhesion



High Workability



Aesthetically Pleasing



50 Years Durability

For more information, please contact us at:



SAINT-GOBAIN PRIMA SDN BHD (579898-W)
Level 19, Tower 5, Avenue 7 The Horizon,
Bangsar South City, No. 8, Jalan Kerinchi,
59200 Kuala Lumpur, Malaysia

General Line 1: +603 7781 1977 | General Line 2: +6012 781 1797

www.primafibreceement.com | www.saint-gobain.my

[f](#) [in](#) [v](#) [@](#) [d](#) saintgobainprima