

weberdry WP 200-F

Two Component, Flexible Cementitious Waterproofing Slurry



weberdry WP 200-F is a flexible, polymer-modified, two component cementitious waterproofing coating comprising a latex admixture and a cement base powder incorporating special additives. It is applied to concrete and mortar to prevent water infiltration in severe conditions. The product enhances the ability of substrates to resist sulphate attack and limits carbon dioxide ion penetration

PRODUCT BENEFITS



DEFORMABLE/
FLEXIBILITY



EASY APPLICATION

USES

- Bathroom, kitchens, under tiled floors and dry yard.
- Refuse Chamber.
- Water tanks and reservoirs.
- Balconies and A/C Ledge.
- RC gutters and planter boxes (but not anti-root product).
- Swimming pools.

TECHNICAL DATA & PHYSICAL PROPERTIES

Colour	- Powder	Grey
	- Liquid	Milky White
Density	- Powder	1600 kg/m ³ (dry)
	- Liquid	1020 kg/m ³
pH of mix		Approx. 10
Shelf Life		12 months
Inflammability		No
Toxicity Hazard		No
Dry Film Thickness		1 - 2 mm
No of coating		Minimum 2 coats for non-retaining structure Minimum 3 coats for water retaining structure
Coverage		1.5 - 2.0 kg / m ² (for 2 coats) 2.5 - 3.0 kg / m ² (for 3 coats)
Pot Life (Working Time)		2 hours
Touch Dry Time		3 - 4 hours
Application Temperature		Between 5°C - 40°C at normal ambient temperature
Damp Resistance		Good
Flexibility		Good
Tensile Strength		> 0.5 N/mm ²
28 Days Air Dry		
ASTM D412 - 16		
Elongation at break		> 100%
28 Days Air Dry		
ASTM D412 - 16		
Water Absorption		≈ 0.10%
28 Days Air Dry		
BS 1881-122 2011		

weberdry WP 200-F

Two Component, Flexible Cementitious Waterproofing Slurry

FEATURES AND BENEFITS

- Flexible
- Good crack bridging capability
- Pre-packed components easy to mix and apply
- Slurry consistency
- Good adhesion to sound substrates.
- Protects against water penetration and concrete carbonation
- Non-toxic and non-corrosive
- Easily applied using brush or roller

PROCEDURE & APPLICATION



Surface Preparation

Concrete, cement-sand render / screed and masonry surfaces must be fully cured, dry, sound, flat or true & free of contaminants eg. grease, oil, dust, loose particles, laitance etc. Steel / metal surface must be free of scale, rust, grease, oil etc. Dampen the surface before coating and remove any excess water to avoid ponding on horizontal surfaces. This is particularly important if the substrate exhibits a high degree of water absorption. Rapid loss of moisture from the waterproof coating may result in pinholes, poor adhesion and overall weakened properties



Mixing

Mix in a clean container by slowly adding Part A (powder) to Part B (liquid) and mixing with a low speed mixer (500 rpm) for 3 - 5 minutes, until a smooth consistent slurry consistency is achieved.



Application

Apply the first coat in the same direction on to the prepared substrate whilst the substrate is still damp from saturation. Leave the first coat to be touch dry for approximately 3 - 4 hours (depends on the site conditions) before applying the second coat. Apply the second coat in a crosswise direction to the first application as soon as first coat has hardened. The second coat applied must be sufficiently thick, to withstand the anticipated water pressure. Ensure that the waterproofing mortar is consistently applied, filling all pores, pinholes or voids. Ensure that the waterproofing is seamlessly applied. Extra care must be taken when applying to joints, cracks, junctions or corners (see note). To obtain an effective waterproof tanking system, **weberdry WP 200-F** must be employed throughout the floor areas, with a wall upturn of between 300 - 600mm. Avoid application in direct sunlight and strong winds.



Curing

The waterproofing must not be wetted while it is still curing and should be protected from direct sunlight, rain, or pedestrian traffic. Ensure at least 4 days of natural air curing. However, 7 days are recommended for overcoating with other cementitious materials, such as screed or tile adhesive, etc. Water ponding tests can be carried out after 1 day of curing.

*Note Because it is not possible to give specific instructions for the various site conditions or to control the applications, the information on this Technical Data Sheet is for general guidance only. Saint-Gobain Weber (M) Sdn Bhd reserves the rights to amend the contents of the data sheet at its sole discretion. (Feb '24)



SAINT-GOBAIN WEBER (M) SDN BHD

No 29 & 31, Jalan TIAJ 2/1, Taman Industri Alam Jaya, 42300 Bandar Puncak Alam, Selangor D E, Malaysia

(603) 60389498/97/89 (603) 6038 9507 info.webermalaysia@saint-gobain.com www.saint-gobain.my



weberdry WP 200-F

Two Component, Flexible Cementitious Waterproofing Slurry

COVERAGE

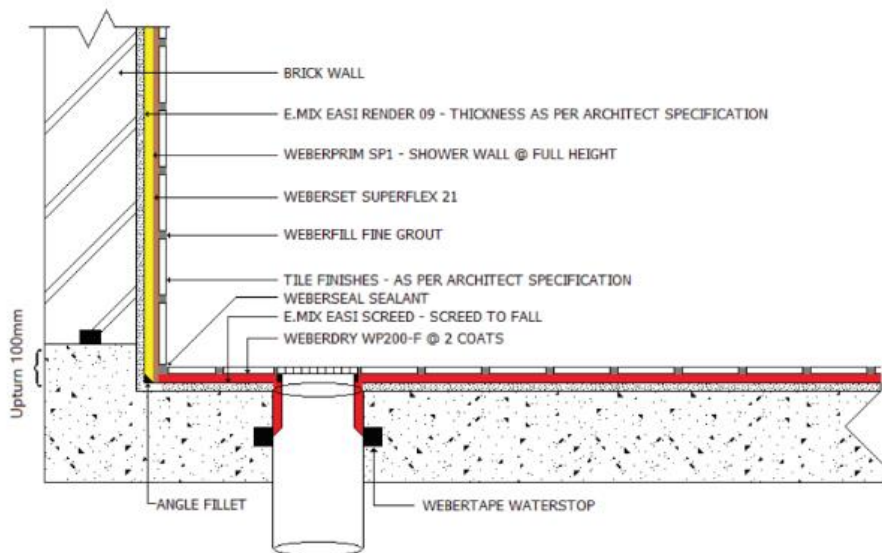
Approximately 2.0kg/m² in 2 coats.

STORAGE & PACKING

Part A (powder) 25kg bag & Part B (liquid) 9 liters drum
 Shelf life of 12 months if unopened and kept in sheltered and dry conditions.

HEALTH & SAFETY

- Do not add water above the recommended stated dosage.
- Use only clean (potable) water.
- Non-Toxic. However, avoid inhaling dust.
- If the product enters the eyes wash out with water and seek medical attention.
- Keep away from children.
- May cause minor irritation to those with sensitive skin. Wear suitable gloves.
- Clean all tools and equipment promptly before the material hardens. Hardened materials can only be removed by mechanical means.



First coat



Second coat

*Note Because it is not possible to give specific instructions for the various site conditions or to control the applications, the information on this Technical Data Sheet is for general guidance only. Saint-Gobain Weber (M) Sdn Bhd reserves the rights to amend the contents of the data sheet at its sole discretion. (Feb '24)



SAINT-GOBAIN WEBER (M) SDN BHD

No 29 & 31, Jalan TIAJ 2/1, Taman Industri Alam Jaya, 42300 Bandar Puncak Alam, Selangor D E, Malaysia

(603) 60389498/97/89 (603) 6038 9507 info.webermalaysia@saint-gobain.com www.saint-gobain.my