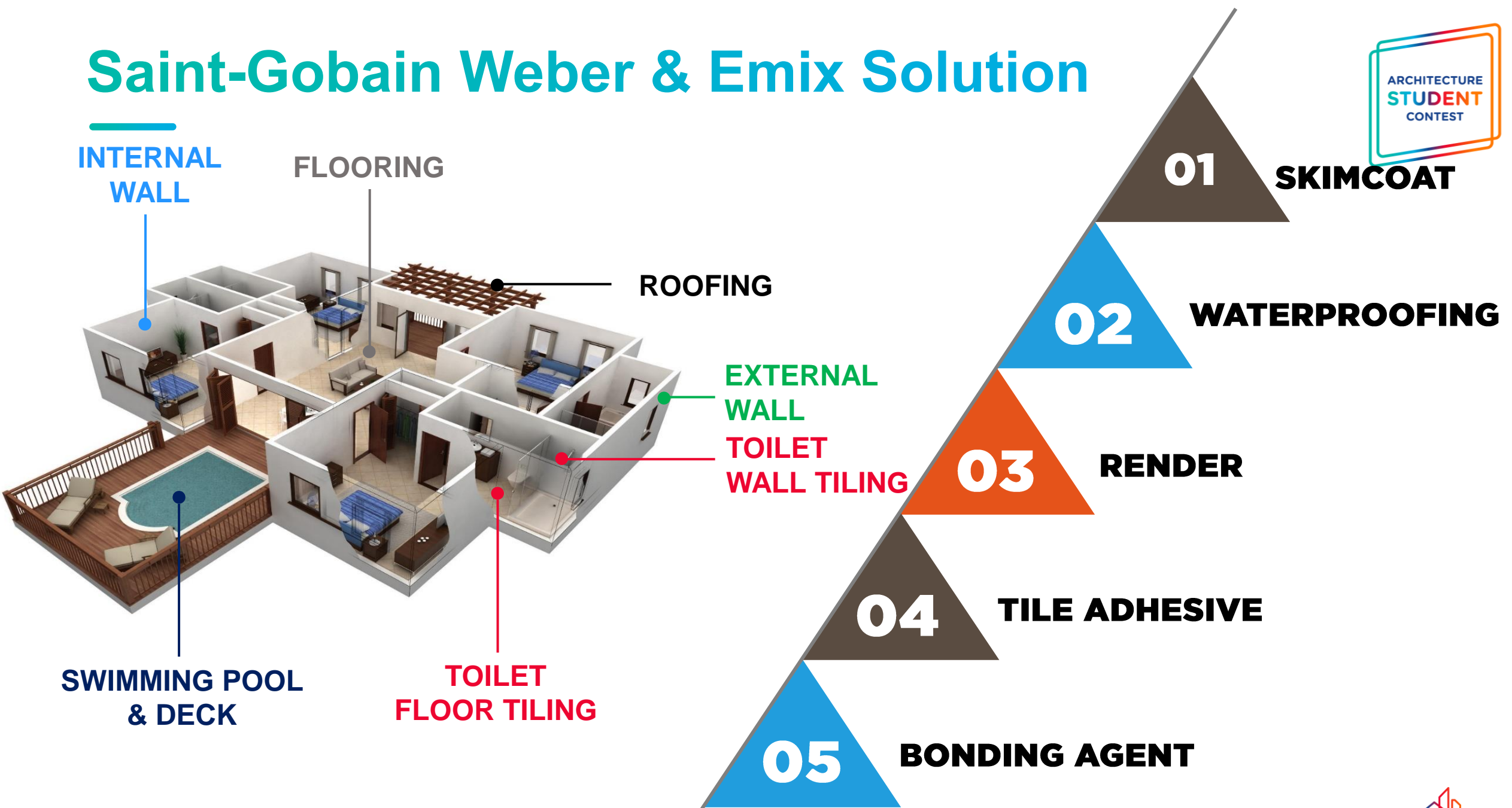
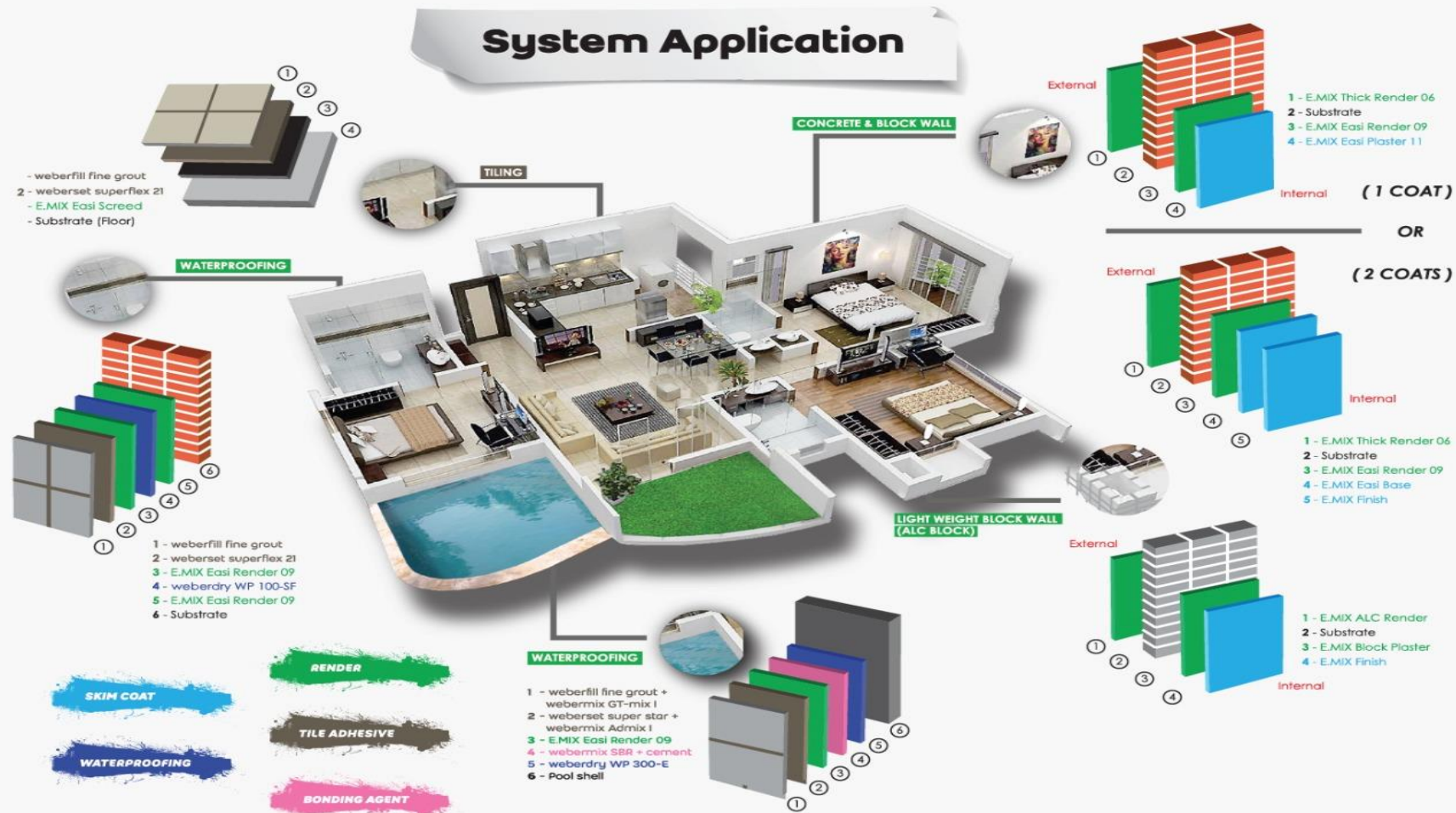


— Helsinki 2024 —

Saint-Gobain Weber & Emix Solution



Saint – Gobain Weber & Emix Solution





Emix Plaster Mortar Solution



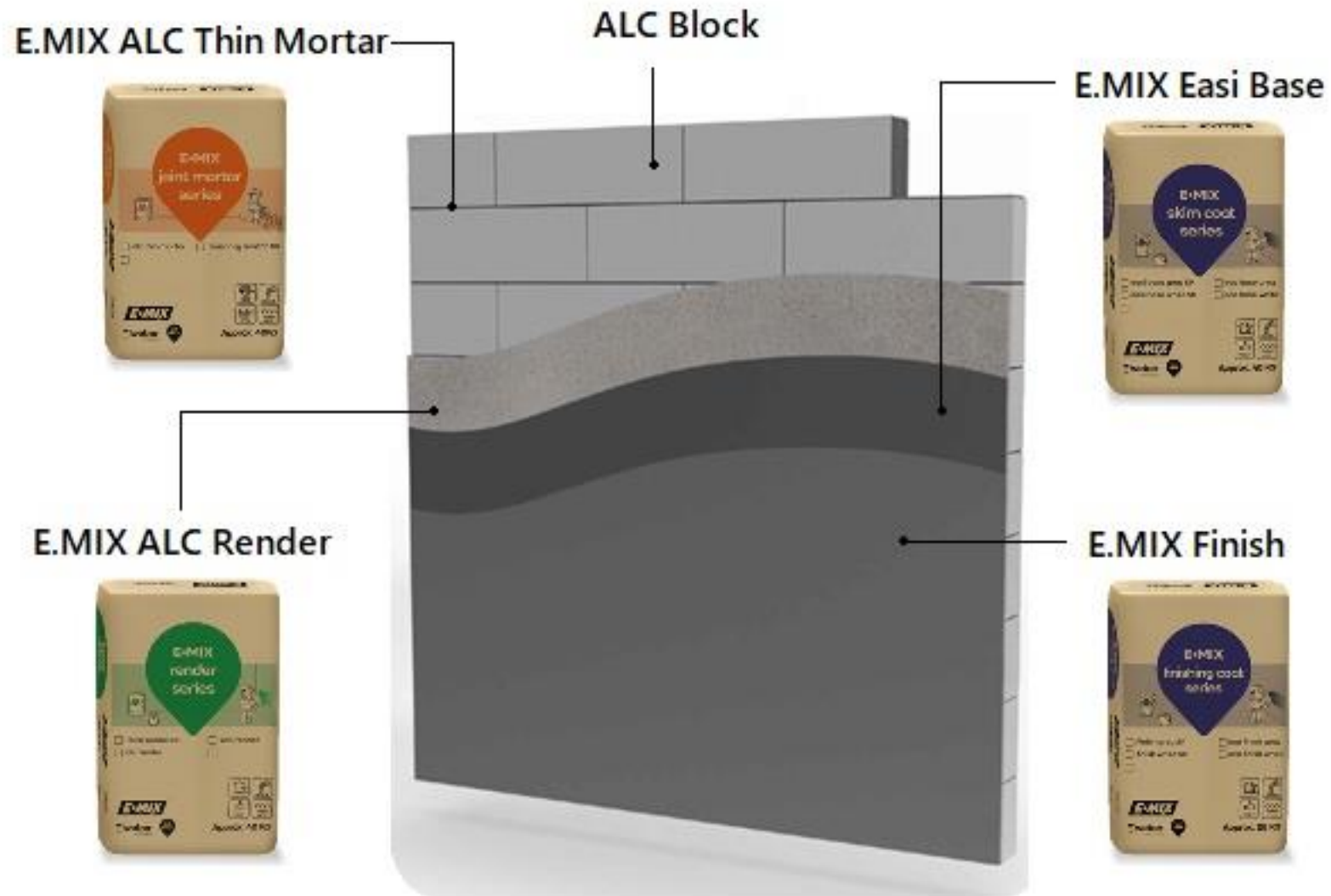
Solution Based on Industrial Mortar



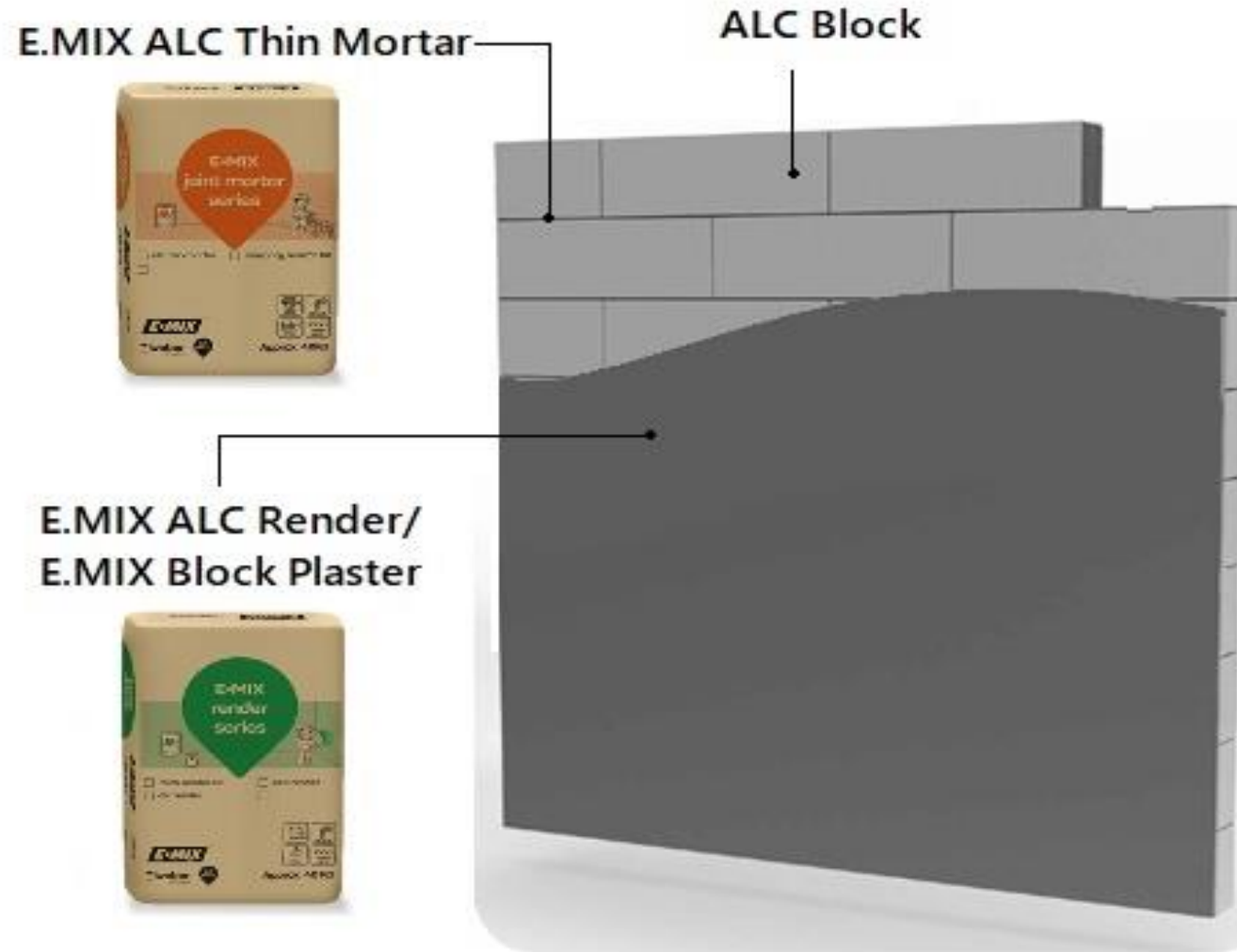
ready to mix
with water



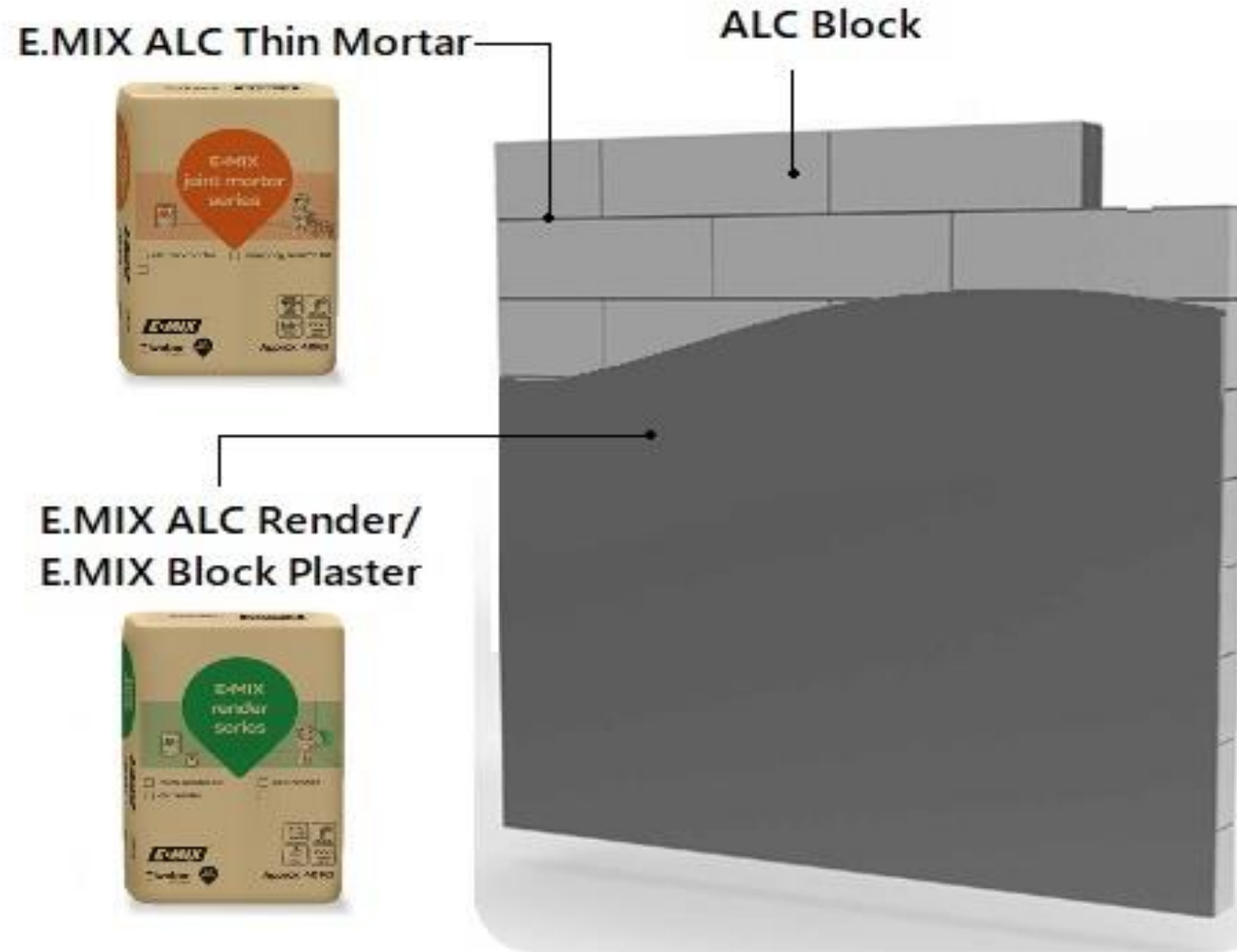
Product Application on ALC Block – Internal Wall



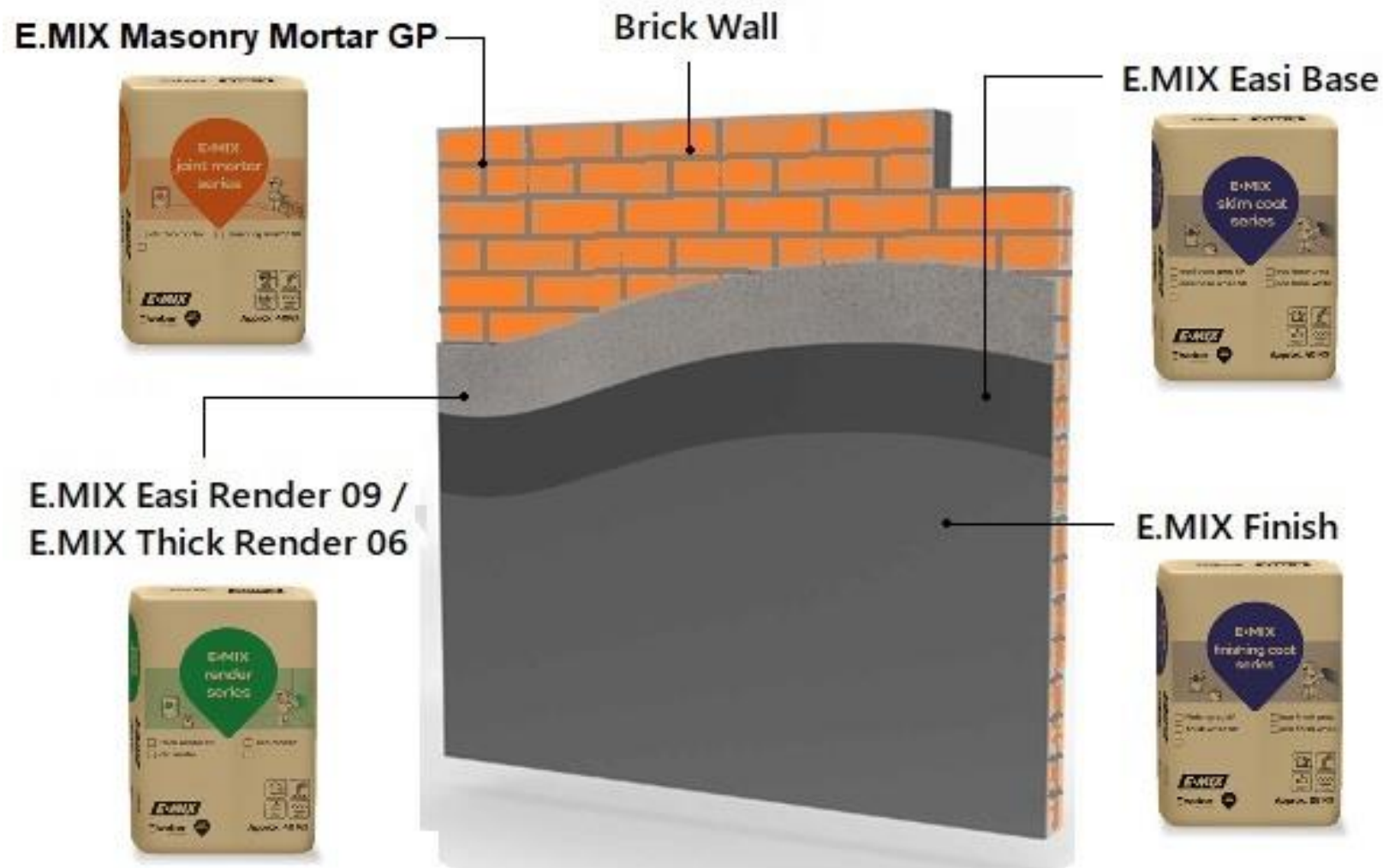
Product Application on ALC Block – External Wall



Product Application on ALC Block – External Wall



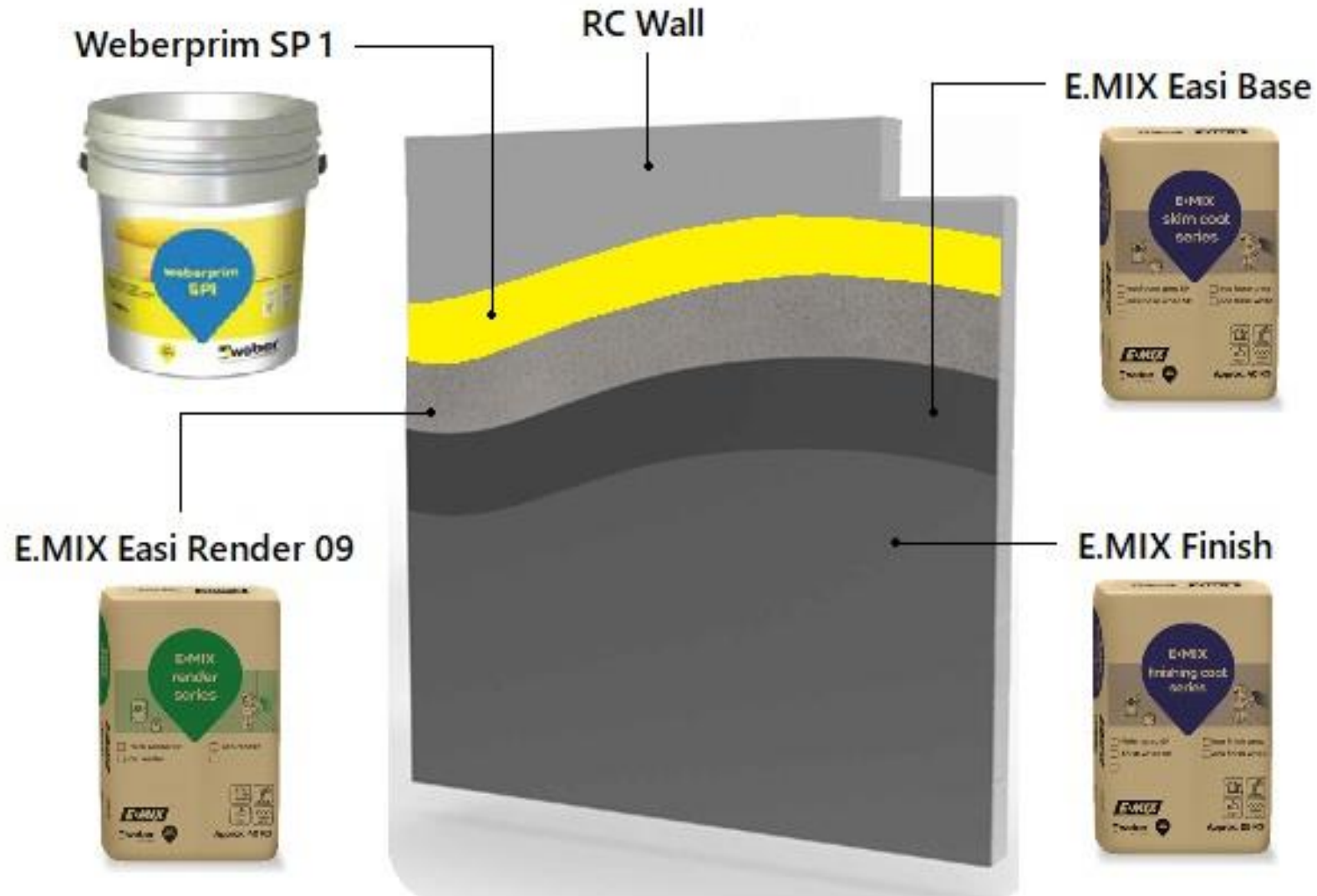
Product Application on Brick wall – Internal Wall



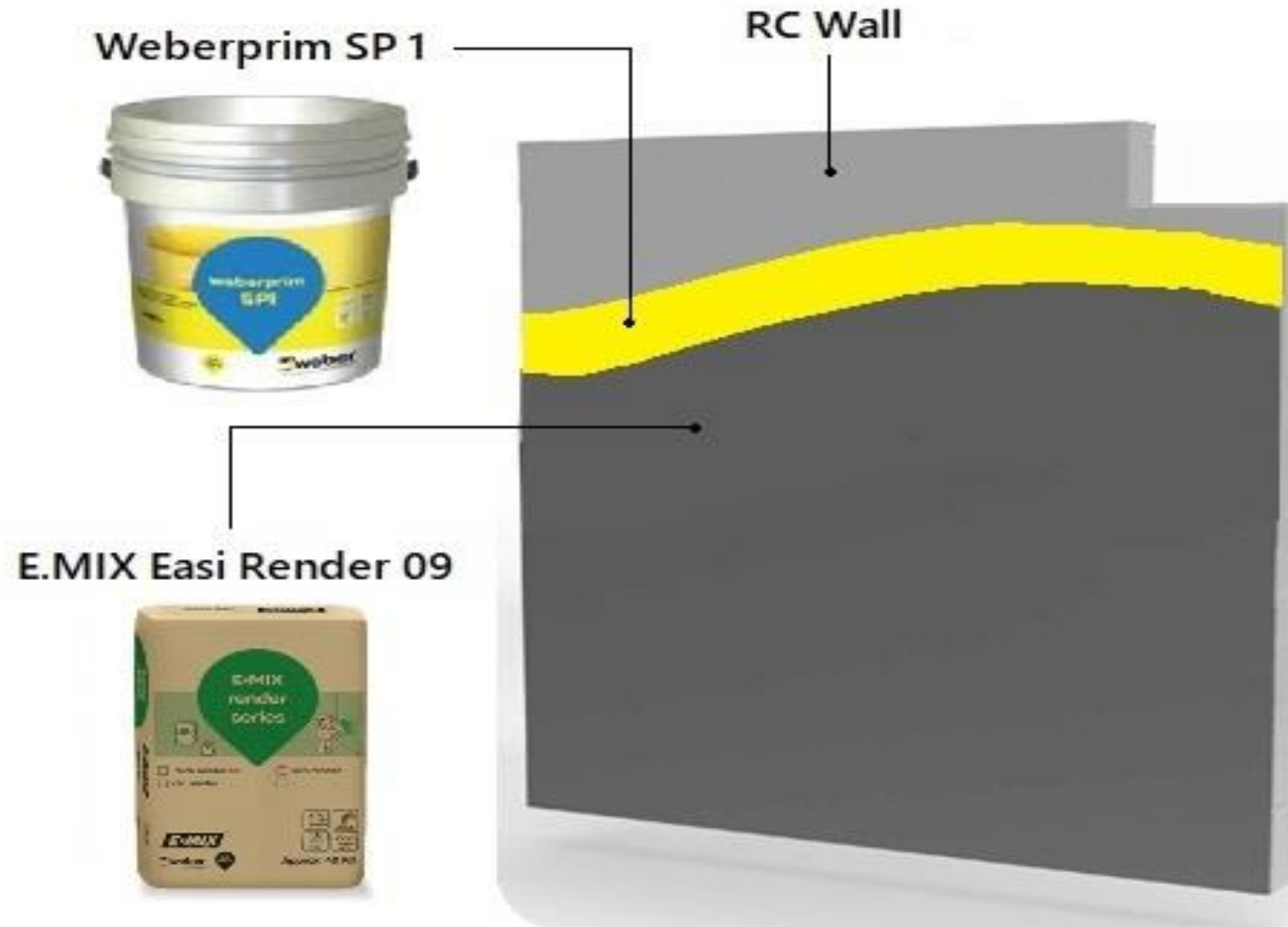
Product Application on Brick Wall – External Wall



Product Application on RC Wall – Internal Wall



Product Application on RC Wall – External Wall





Weber Tile Adhesive

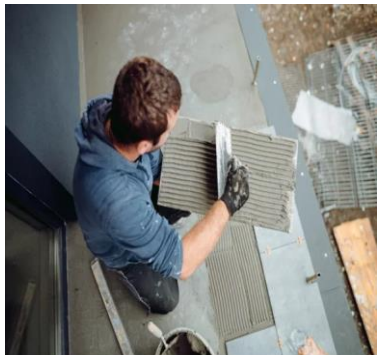
Tile Adhesive Technology Evolution



Use Cement-Sand Mortar (cement shrinkage during curing)



Modification of basic materials:
Cement (Binder) & Sand (Filler) with chemical additive for improved chemical and physical properties



Tiles installed using Buttering system



Mortar gauged with water – Limited scope of application



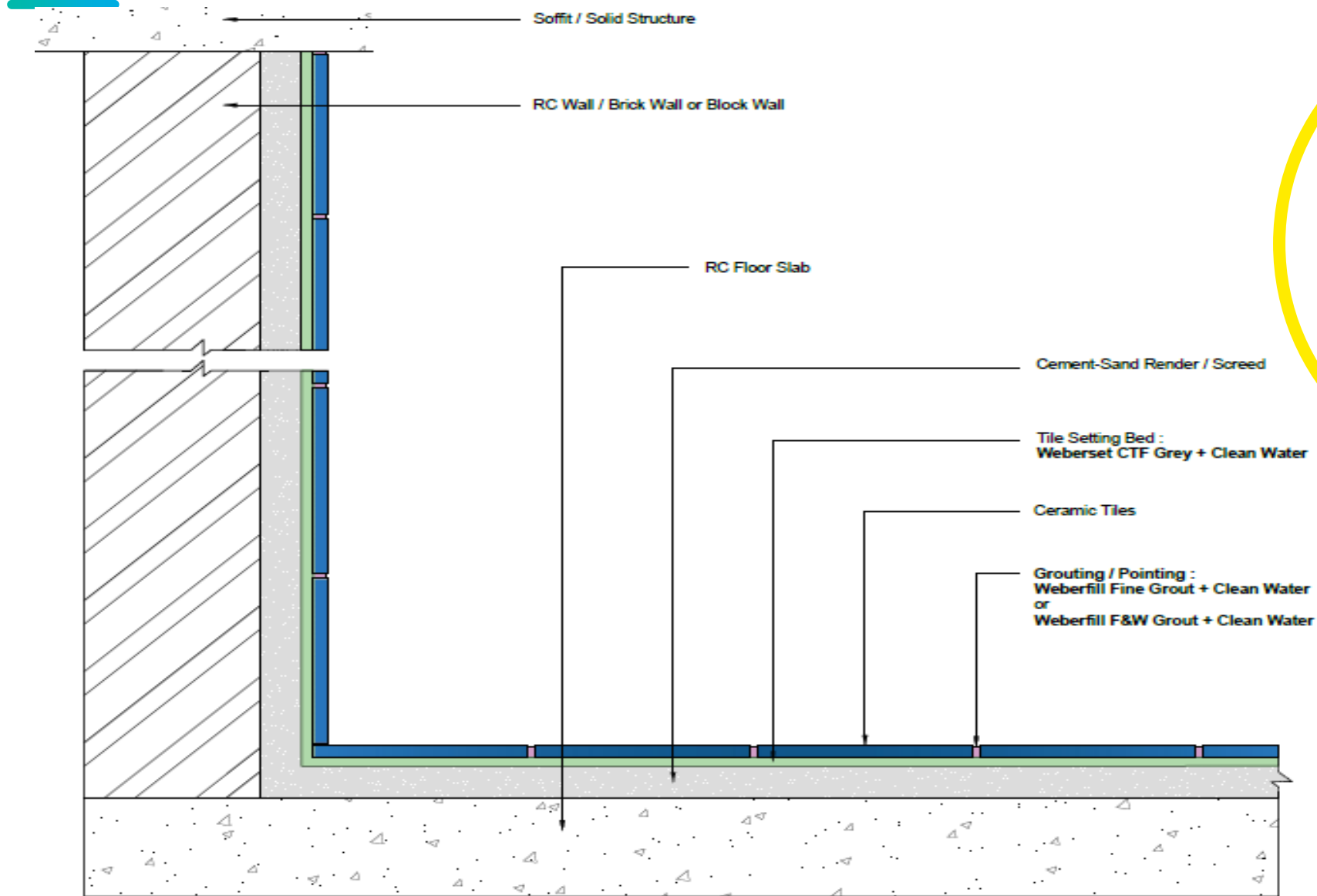
Improvisation of the Ceramic Tile installation method:
Troweling System



Usage of Natural & Synthetic Latex Admixtures (with basic adhesive):
performance for non-conventional ceramic tile installation

Internal General Area- Ceramic Tiles (C1)

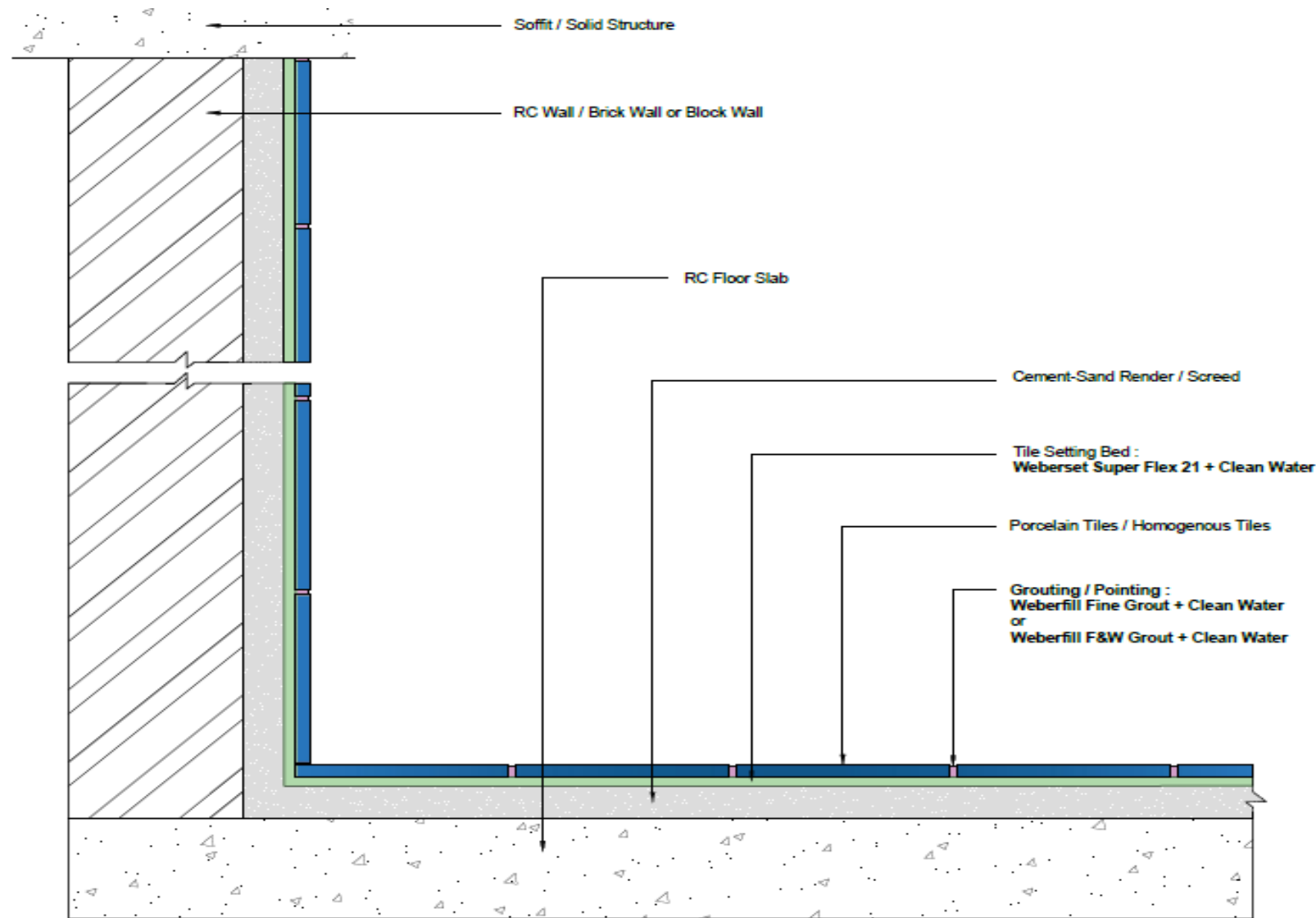
ARCHITECTURE
STUDENT
CONTEST



**Weberset CTF
GREY**



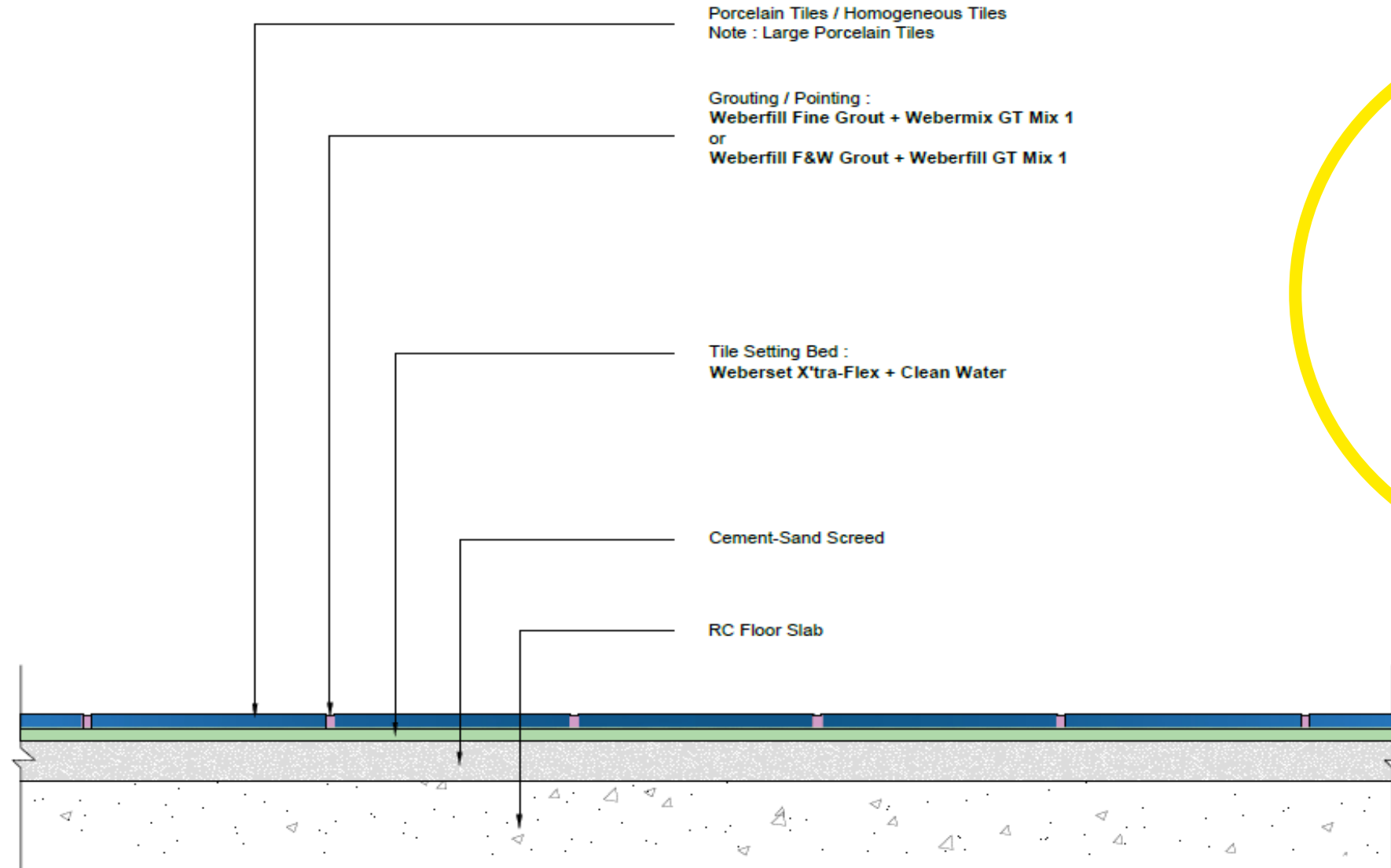
Internal General Area – Porcelain Tiles (C2TE)



Weberset Superflex



External General Area – Porcelain Tiles (C2TES1)

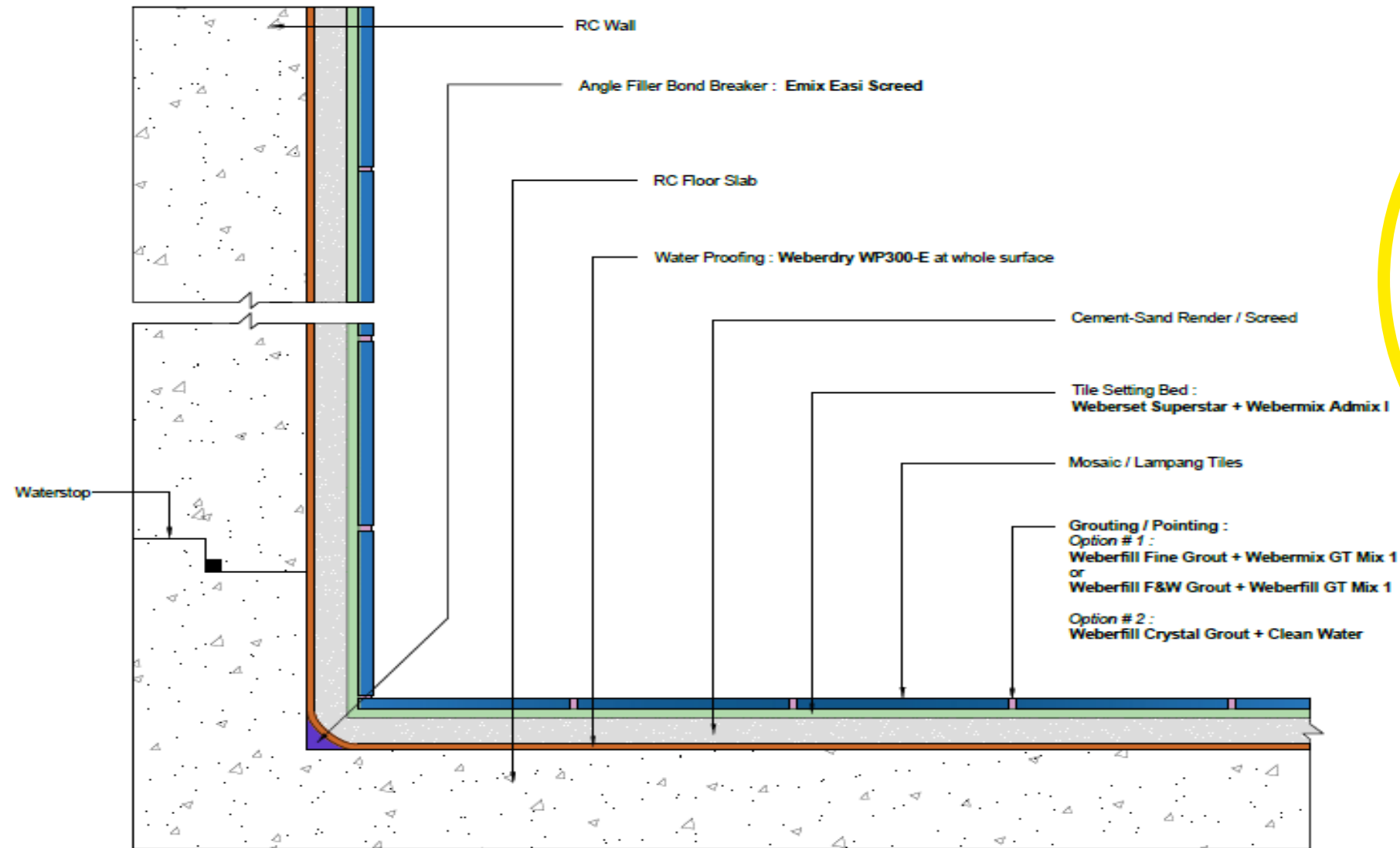


Weberset X'traflex



Swimming Pool Area – Mosaic / Lampang (C2TES1)

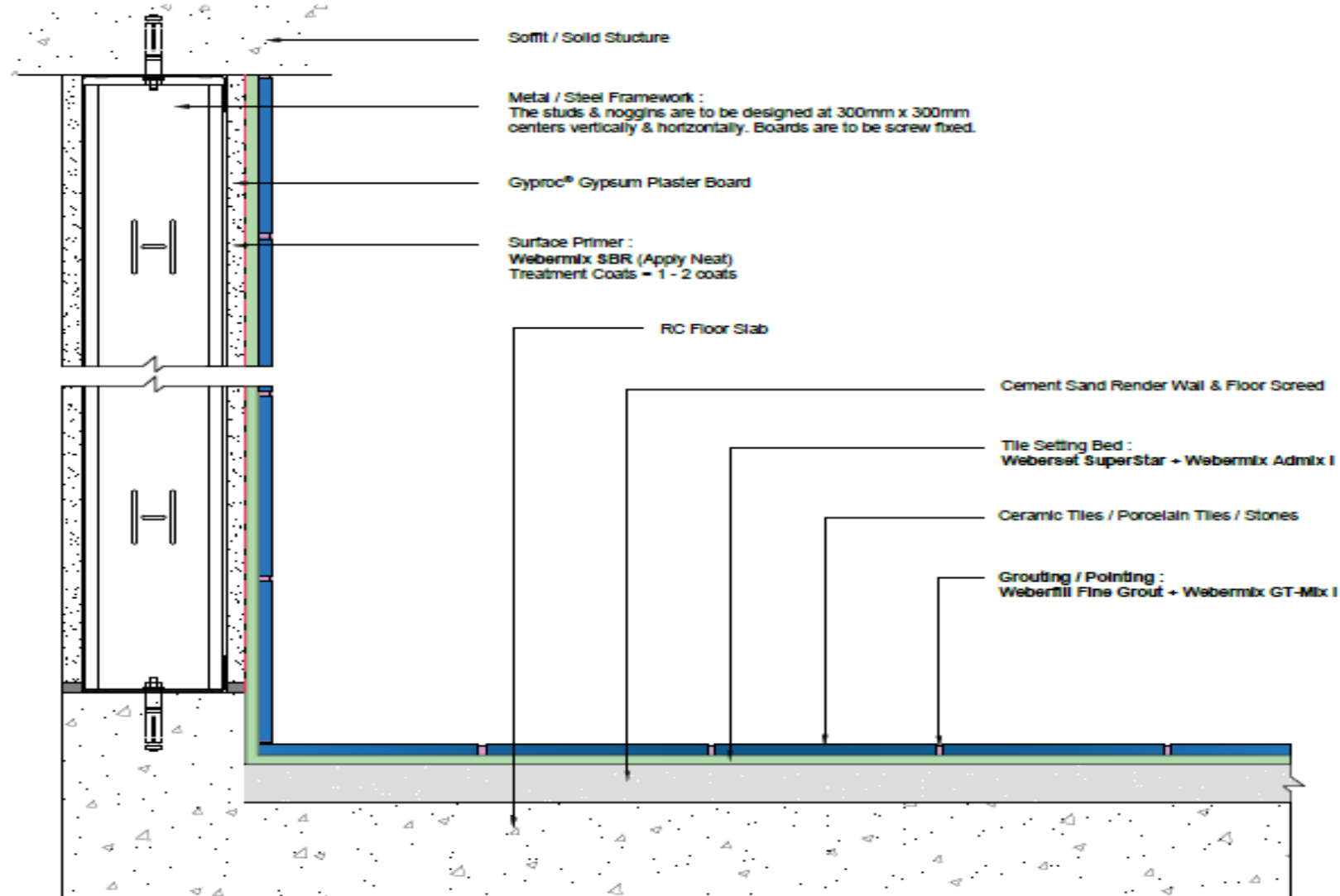
ARCHITECTURE
STUDENT
CONTEST



**Weberset
Superstar & Weber
Admix 1**



Drywall/Gypsum Board- Porcelain Tiles (C2TES1)



Weberset Superstar & Weber Admix 1



Green Product Range



Weberset Easy Flex



Weberset One Fix



Weberset Superflex 21



Weberset X'traflex

Thank you

Q&A