



WEBERFLOOR SYSTEMS

BY NAD BAHARUDIN



INTRODUCTION TO FLOORING

FLOORING

Upper most of a floor that is designed to provide a wearing surface. Synthetic Floor, Carpet, Vinyl Floor & etc.

BASE SUBSTRATE

Building element which provides support for a screed concrete, stone, wooden substrates & etc.

SCREED

Layer or layers of material laid in situ onto a base, bonded or unbonded, or onto an intermediate layer or insulating layer, to obtain one or more purposes:

- Self-levelled
- Carry the final flooring
- Provide a wearing surface
- Deflecting screed, monolithic screed, cementitious screed & etc.

TYPES OF WEBER PERFORMANCE FLOORING SYSTEMS

1. WEBCRETE
2. WEBCRETE PLUS
3. WEBCRETE PLUS PLUS
4. WEBCRETE PLUS PLUS PLUS
5. WEBCRETE PLUS PLUS PLUS PLUS
6. WEBCRETE PLUS PLUS PLUS PLUS PLUS
7. WEBCRETE PLUS PLUS PLUS PLUS PLUS PLUS

WAREHOUSE @ TUAS SINGAPORE

WEBERFLOOR LIQUID FLOOR HARDENER & DRY SHAKE

Photo credit: A. Mohd. Azhar

WEBERBOND SYSTEMS OVERVIEW

MINERAL SILICATE BINDING TECHNOLOGY

MEMPHYS

- No shrinkage and no swelling
- Chemical & salt resistance
- Self-healing
- High abrasion resistance
- Proven after application
- Fast and easy application
- Economical and safe
- No efflorescence
- Can be applied in wet or dry conditions
- Flexible applications
- Proven after application
- Economical and safe

WEBERBOND DÉCOR FLOOR

INDUSTRIAL SELF-SMOOTHING FLOORING

Underlaid Décor Floor is a professional grade self-smoothing product ready for the purpose of creating industrial floors but also can be used for decorative finish.

It is designed to meet high industrial floor standards where high abrasion resistance is required, as well as containing some chemical loads.

FACTORY

OFFICE

WAREHOUSE

WAREHOUSE @ PASIR PANJANG SINGAPORE

WEBERBOND DÉCOR FLOOR

Photo credit: A. Mohd. Azhar

WEBERFLOOR CEMENTITIOUS UNDERLAYMENT

WEBERFLOOR 500

A fast-hardening self-leveling floor surfacing system, prebanded, dry powder for application at a thickness of 3 – 10mm.

A smooth underlayment to receive vinyl sheets, carpet and other finishing.

Technical Data & Physical Properties	
Colours	Grey
Composition	OPC, fast setting cement, graded sand, polymer, non-reactive aggregate, and other chemical additives
Density	Approx. 2.1 kg/m³ (135 lb/cu ft)
Thickness	3 - 10mm
Shrinkage	Approx. 0.1 - 0.3 mm / 100 mm
Time to Foot Traffic	Approx. 2 hrs
Compressive Strength	16 (4000) 10 days 22 (4850) 28 days 25 (5500) 28 days
Flexural Strength	4.50 (1000) 10 days 5.20 (1150) 28 days 5.50 (1225) 28 days
ASTM C1440	Approx. 10

INTRODUCTION TO FLOORING



FLOORING

- Upper most of a floor that is designed to provide a **wearing surface**.
- Synthetic Floor, Carpet, Vinyl Floor & etc.



BASE/SUBSTRATE

- Building element which provides support for a screed concrete, steel, wooden substrates & etc.



SCREED

- Layer or layers of material laid in-situ onto a base, bonded or unbonded, or onto an intermediate layer or insulating layer, to obtain one or more purposes.
 - Defined Level
 - Carry the final flooring
 - Provide a wearing surface
- Self-levelling screed, resinous screed, cementitious screed & etc.

REQUIREMENTS OF A FLOOR: BASED ON PROJECT TYPES

INDUSTRIAL PROJECT	COMMERCIAL PROJECT
<ul style="list-style-type: none">• Flat	<ul style="list-style-type: none">• Aesthetic
<ul style="list-style-type: none">• Dust Proof	<ul style="list-style-type: none">• Decorative
<ul style="list-style-type: none">• Abrasion Resistance	<ul style="list-style-type: none">• Hard Wearing
<ul style="list-style-type: none">• Slip Resistance	<ul style="list-style-type: none">• Noise Dampening
<ul style="list-style-type: none">• Chemical resistance	<ul style="list-style-type: none">• Comfortable
<ul style="list-style-type: none">• Impact Resistance	<ul style="list-style-type: none">• Dust Proof
<ul style="list-style-type: none">• Aesthetic	<ul style="list-style-type: none">• Slip Resistance
<ul style="list-style-type: none">• Thermal Shock Resistance	<ul style="list-style-type: none">• Scratch Proof
<ul style="list-style-type: none">• Hygiene / Taint Free	<ul style="list-style-type: none">• Impact Resistance
<ul style="list-style-type: none">• Anti-Static	<ul style="list-style-type: none">• Insulating

TYPES OF WEBER PERFORMANCE FLOORING SYSTEMS

INDUSTRIAL POLYURETHANE CONCRETE

SMOOTH FINISH

WEBERFLOOR PUR MF
WEBERFLOOR PUR SL

TEXTURED FINISH

WEBERFLOOR PUR HD

WALL/COVING

WEBERFLOOR PUR WG

ANTISTATIC

WEBERFLOOR PUR MFAS

1



INDUSTRIAL & DECORATIVE POLYURETHANE RESIN

INDUSTRIAL FLOORS

WEBERFLOOR PUD
COATING

UV STABLE

WEBERFLOOR PUR
TOPCOAT

2



INDUSTRIAL & DECORATIVE EPOXY RESIN

WATER BASED

WEBERPRIM DP
WEBERPRIM WBAS
WEBERFLOOR EP 510 WB
WEBERFLOOR EP 512 WBAS

SOLVENT-FREE

WEBERPRIM EP 500 PR
WEBERFLOOR EP 530 HB
WEBERFLOOR EP 520 SL AS
WEBERFLOOR EP 523 SL
WEBERFLOOR EP 550 MS

SOLVENT-BASED

WEBERPRIM SB
WEBERFLOOR EP 540 SB

NOVOLAC

WEBERFLOOR EP 536 NV
WEBERFLOOR EP 536 NV SL

3



DRY SHAKE & LIQUID FLOOR HARDENER

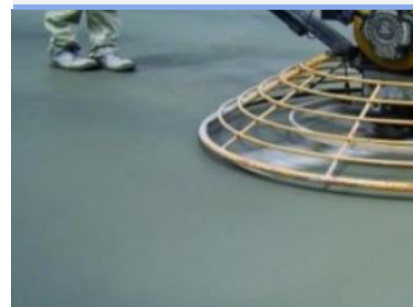
DRY SHAKES

E.MIX FLOOR HARDENER

LIQUID FLOOR HARDENER

WEBERFLOOR LIQUID
FLOOR HARDENER

4



UNDERLAYMENT & OVERLAYMENT

UNDERLAYMENT

WEBERFLOOR 550
WEBERFLOOR CEM MB

OVERLAYMENT

WEBERFLOOR 560

5



ADVANCED SILICATE BASED FLOOR TOPPING

SMOOTH FINISH

WEBERBOND DECOR FLOOR

TERRAZZO

WEBERBOND TERRAZZO
FLOOR

6



SPORTS FLOORING

PRIMER/BASE

WEBERFLOOR SPORTS
COURT BASE/PRIMER

BODY/TOPCOAT

WEBERFLOOR SPORTS
COURT TOPCOAT

LINE MARKING

WEBERFLOOR SPORTS
COURT LINE MARKING

7



weber
SAINT-GOBAIN
E-MIX

FLOORING

Weberfloor EP 530 HB
high build epoxy floor coating

Weberfloor EP 530 HB is a two-component, high-performance, solvent-free epoxy coating for a wide range of applications.

PRODUCT BENEFITS

- SOLVENT FREE
- CHEMICAL RESISTANT
- SEAMLESS

USERS

Weberfloor EP 530 HB is for workshops, processing areas, kitchen, and food industries.

ADVANTAGES

- Smooth and seamless
- Excellent chemical resistance
- Low maintenance cost
- No offensive odour

TECHNICAL DATA & PHYSICAL PROPERTIES

Pot Life: 30 minutes
Recoating Time @ 30°C: 10 hours minimum

	15°C	20°C	25°C
Foot Traffic	24 hours	20 hours	18 hours
Light Traffic	36 hours	30 hours	24 hours
Full chemical cure	10 days	7 days	7 days

Density @ 28°C: 1.40 ± 0.05 g/ml
Adhesive Strength (Concrete Failure): > 1.5 N/mm²
Compressive Strength: 50 N/mm² (28 days)
Flexural Strength: 25 N/mm²
Shore D Hardness: 75 - 80
Temperature Resistance: up to 70°C
Water Permeability: Nil (impenetrable)
Cylindrical Abrasion (Karatzen Test): < 0.5
Taber Abraser (ASTM D 4060 - 10): 64 mg
Dissolved Oxygen Difference (BS 6920: Part 1: 2000): < 2.39 mg/L or less

Specifications are subject to change without notification. Results shown are typical but reflect laboratory test procedures conducted in laboratory conditions. Actual test performance will depend on installation methods and site conditions.

CONSUMPTION

Approx. 0.17 - 0.25 kg/m² per coat. Actual consumption rate will depend on the porosity and profile of the substrate.

SAINT-GOBAIN WEIDER (PTE) LTD
2 Venture Drive, #13-18
Vantage Exchange, Singapore 069505
Tel: +65 6330 0000 Fax: +65 6330 0001
Email: sales@sgb.com.sg Website: www.sgb.com.sg

SAINT-GOBAIN WEIDER (PTE) LTD
No. 23 & 25, Jalan TAWUJ, Taman Industri Alam Jaya,
42100 Bandar Puncak Alam, Selangor D.S., Malaysia
Tel: +65 3330 0000 Fax: +65 3330 0001
Email: sales@sgb.com.sg Website: www.sgb.com.sg

weber
SAINT-GOBAIN
E-MIX

FLOORING

Weberfloor EP 530 HB
high build epoxy floor coating

PROCEDURE APPLICATION

Surface Preparation
The substrate must be dry and clean, sound, and free any laitance, oil, grease, and other contaminants. Remove using industrial detergent followed by scrubbing. The surface must be shot-blast, scarifying, or grit blasting followed by repair. Repair any irregularities, blowholes, cracks, etc. using solvent products. The pre-treated surface must have a bond strength of at least 2.5 N/mm².

Application
Apply the surface using Weberprim EP 500 PR. Use speed mix 500 PR until it is uniform. Apply Weberprim EP 500 PR by brush.

Mix
Mix Weberfloor EP 530 HB Part A and Part B using a slow speed drill until the colour is uniform. Do not mix more than 10 minutes. The material should be applied using a notched or flat trowel for a typical thickness of 0.15 mm/coat. A fine texture resistant can be achieved by scatter fine silica sand into the wet film.

PRECAUTION
In an extensive project, co-ordinate the supply to ensure that it is used to reduce the colour variation from the batch process. Do not use if the humidity exceeds 90% or when the surface temperature is to be < 5°C. Do not apply when temperatures are < 5°C and > 40°C.

CLEANING
Clean the tools and equipment immediately after use with thinner removed mechanically.

STORAGE & PACKING
Weberfloor EP 530 HB is available in 5 kg sets (Part A - 2.75 kg part B - 2.25 kg) and 20 kg sets (Part A - 11.25 kg part B - 8.75 kg). Shelf life of 12 months if unopened, and kept in dry and cool conditions.

HEALTH & SAFETY
Good ventilation is required, if not, a portable exhaust fan shall be used. Avoid breathing dusts and fumes during mixing and application process. In the event of eye and skin contact, wash with plenty of water, and seek medical attention if irritation persists. Please keep out of reach of children.

Note: Document is not possible to give specific instructions for the various site conditions or to control the application, the information on this document is for general guidance only. Saint-Gobain Weider Pte Ltd reserves the right to amend the content of the document at any time without notice.

SAINT-GOBAIN WEIDER (PTE) LTD
2 Venture Drive, #13-18
Vantage Exchange, Singapore 069505
Tel: +65 6330 0000 Fax: +65 6330 0001
Email: sales@sgb.com.sg Website: www.sgb.com.sg

SAINT-GOBAIN WEIDER (PTE) LTD
No. 23 & 25, Jalan TAWUJ, Taman Industri Alam Jaya,
42100 Bandar Puncak Alam, Selangor D.S., Malaysia
Tel: +65 3330 0000 Fax: +65 3330 0001
Email: sales@sgb.com.sg Website: www.sgb.com.sg

TECHNICAL DATASHEETS

SAFETY DATASHEETS

WEBERFLOOR

weber
SAINT-GOBAIN
E-MIX

SAFETY DATA SHEET

WEBERFLOOR EP 530 HB (HIGH BUILD EPOXY COATING) - PART A

Issue date: 01.01.2020 Version number: 3 Revision: 16.12.2021

IDENTIFICATION OF HAZARDOUS CHEMICAL AND OF THE SUPPLIER

Product Name: WEBERFLOOR EP 530 HB
Supplier: SAINT-GOBAIN WEIDER (PTE) LTD
Address: 2 Venture Drive, #13-18, Vantage Exchange, Singapore 069505

CLASSIFICATION OF HAZARDOUS CHEMICAL

Classification: H302, H312, H332
Signal Word: Harmful
Precautionary Statements: P201, P202, P273
Hazard Statements: H410
Environmental Precautions: Do not release into the environment. Do not use high pressure water jet.

ACCIDENTAL RELEASE MEASURES

Personal precautions, protective equipment and emergency procedures: Isolate area. Keep unnecessary and unprotected personnel from entering the area.
Environmental precautions: Prevent from entering into soil, ditches, sewers, waterways or groundwater.
Methods and materials for containment and cleaning up: Contain spilled material if possible, absorb with materials such as sand or saw dust, remove residual with soap and hot water. Collect in suitable and properly labeled containers.

HANDLING AND STORAGE

Storage: Storage temperature: 2-40°C. Keep container tightly sealed.
Handling: Avoid open flames and sources of ignition. Ensure good ventilation at the workplace.

EXPOSURE CONTROLS AND PERSONAL PROTECTION

Engineering controls: Ensure good ventilation.
Exposure limits: Not established.
Control parameters: None.
Respiratory Protection: Good ventilation is required. Wear mask if required by local regulation.
Hand Protection: Wear suitable protective gloves.
Eye Protection: Suitable protective goggles.
Skin Protection: Wear protective clothes and footwear.

PHYSICAL AND CHEMICAL PROPERTIES

Physical State: Liquid
Colour: Coloured
Odour: Mild
Solubility in water: Insoluble
Specific gravity: Approx. 1.25-1.35
Boiling point: > 200°C
Freezing point: Not applicable
Decomposition temperature: Not applicable
Auto-ignition temperature: Not applicable

STABILITY AND REACTIVITY

Stability: Stable under normal conditions.
Reactivity: No reaction with water, acids, alkalis, or oxidizing agents.

SAFETY PRECAUTIONS

Keep away from heat, open flames, and other sources of ignition. Do not use in confined spaces without adequate ventilation. Do not breathe dusts and fumes. Do not get into eyes, on skin, or on clothing. If contact with skin, wash immediately with plenty of clean water for at least 15 minutes and seek medical advice if irritation persists. Do not get into eyes. If contact with eyes, wash immediately with plenty of clean water for at least 15 minutes and seek medical advice if irritation persists. Do not get into eyes. If contact with eyes, wash immediately with plenty of clean water for at least 15 minutes and seek medical advice if irritation persists.

SAFETY PRECAUTIONS

Keep away from heat, open flames, and other sources of ignition. Do not use in confined spaces without adequate ventilation. Do not breathe dusts and fumes. Do not get into eyes, on skin, or on clothing. If contact with skin, wash immediately with plenty of clean water for at least 15 minutes and seek medical advice if irritation persists. Do not get into eyes. If contact with eyes, wash immediately with plenty of clean water for at least 15 minutes and seek medical advice if irritation persists. Do not get into eyes. If contact with eyes, wash immediately with plenty of clean water for at least 15 minutes and seek medical advice if irritation persists.

weber
SAINT-GOBAIN
E-MIX

SAFETY DATA SHEET

WEBERFLOOR EP 530 HB (HIGH BUILD EPOXY COATING) - PART A

Issue date: 01.01.2020 Version number: 3 Revision: 16.12.2021

IDENTIFICATION OF HAZARDOUS CHEMICAL AND OF THE SUPPLIER

Product Name: WEBERFLOOR EP 530 HB
Supplier: SAINT-GOBAIN WEIDER (PTE) LTD
Address: 2 Venture Drive, #13-18, Vantage Exchange, Singapore 069505

CLASSIFICATION OF HAZARDOUS CHEMICAL

Classification: H302, H312, H332
Signal Word: Harmful
Precautionary Statements: P201, P202, P273
Hazard Statements: H410
Environmental Precautions: Do not release into the environment. Do not use high pressure water jet.

ACCIDENTAL RELEASE MEASURES

Personal precautions, protective equipment and emergency procedures: Isolate area. Keep unnecessary and unprotected personnel from entering the area.
Environmental precautions: Prevent from entering into soil, ditches, sewers, waterways or groundwater.
Methods and materials for containment and cleaning up: Contain spilled material if possible, absorb with materials such as sand or saw dust, remove residual with soap and hot water. Collect in suitable and properly labeled containers.

HANDLING AND STORAGE

Storage: Storage temperature: 2-40°C. Keep container tightly sealed.
Handling: Avoid open flames and sources of ignition. Ensure good ventilation at the workplace.

EXPOSURE CONTROLS AND PERSONAL PROTECTION

Engineering controls: Ensure good ventilation.
Exposure limits: Not established.
Control parameters: None.
Respiratory Protection: Good ventilation is required. Wear mask if required by local regulation.
Hand Protection: Wear suitable protective gloves.
Eye Protection: Suitable protective goggles.
Skin Protection: Wear protective clothes and footwear.

PHYSICAL AND CHEMICAL PROPERTIES

Physical State: Liquid
Colour: Coloured
Odour: Mild
Solubility in water: Insoluble
Specific gravity: Approx. 1.25-1.35
Boiling point: > 200°C
Freezing point: Not applicable
Decomposition temperature: Not applicable
Auto-ignition temperature: Not applicable

STABILITY AND REACTIVITY

Stability: Stable under normal conditions.
Reactivity: No reaction with water, acids, alkalis, or oxidizing agents.

SAFETY PRECAUTIONS

Keep away from heat, open flames, and other sources of ignition. Do not use in confined spaces without adequate ventilation. Do not breathe dusts and fumes. Do not get into eyes, on skin, or on clothing. If contact with skin, wash immediately with plenty of clean water for at least 15 minutes and seek medical advice if irritation persists. Do not get into eyes. If contact with eyes, wash immediately with plenty of clean water for at least 15 minutes and seek medical advice if irritation persists. Do not get into eyes. If contact with eyes, wash immediately with plenty of clean water for at least 15 minutes and seek medical advice if irritation persists.

SAFETY PRECAUTIONS

Keep away from heat, open flames, and other sources of ignition. Do not use in confined spaces without adequate ventilation. Do not breathe dusts and fumes. Do not get into eyes, on skin, or on clothing. If contact with skin, wash immediately with plenty of clean water for at least 15 minutes and seek medical advice if irritation persists. Do not get into eyes. If contact with eyes, wash immediately with plenty of clean water for at least 15 minutes and seek medical advice if irritation persists. Do not get into eyes. If contact with eyes, wash immediately with plenty of clean water for at least 15 minutes and seek medical advice if irritation persists.

SINGAPORE GREEN BUILDING COUNCIL

SINGAPORE GREEN BUILDING PRODUCT CERTIFICATE

AWARDED TO
Saint-Gobain (Singapore) Pte Ltd

2 Venture Drive, #13-18
Vantage Exchange, Singapore 069505

FOR THE PRODUCT
Floor Coating

PRODUCT BRAND
WEBER

PRODUCT MODEL
Weberfloor EP 520SL

THE PRODUCT HAS BEEN ASSESSED ACCORDING TO THE ASSESSMENT CRITERIA OF SINGAPORE GREEN BUILDING PRODUCT CERTIFICATION SCHEME. IT HAS BEEN AWARDED THE RATING:

Rating: **Good**

Director: SGBPC Pte Ltd

Certificate Number: SGBPC 4018
Original Issue Date: 14 February 2022
Valid Till: 13 February 2024

Use and reference in this certificate is subject to the terms and conditions of the Singapore Green Building Product Certification Scheme. Renewal certificate may also be issued at the discretion of the Council. The verification status may be verified at the Singapore Green Building Council website (www.sgb.org.sg).

SINGAPORE GREEN BUILDING COUNCIL

SINGAPORE GREEN BUILDING PRODUCT CERTIFICATE

AWARDED TO
Saint-Gobain (Singapore) Pte Ltd

2 Venture Drive, #13-18
Vantage Exchange, Singapore 069505

FOR THE PRODUCT
Floor Coating

PRODUCT BRAND
WEBER

PRODUCT MODEL
Weberfloor EP 530HB

THE PRODUCT HAS BEEN ASSESSED ACCORDING TO THE ASSESSMENT CRITERIA OF SINGAPORE GREEN BUILDING PRODUCT CERTIFICATION SCHEME. IT HAS BEEN AWARDED THE RATING:

Rating: **Good**

Director: SGBPC Pte Ltd

Certificate Number: SGBPC 4018
Original Issue Date: 14 February 2022
Valid Till: 13 February 2024

Use and reference in this certificate is subject to the terms and conditions of the Singapore Green Building Product Certification Scheme. Renewal certificate may also be issued at the discretion of the Council. The verification status may be verified at the Singapore Green Building Council website (www.sgb.org.sg).

SINGAPORE GREEN LABEL CERTIFICATION

HACCP CERTIFICATION

HACCP INTERNATIONAL
eliminate the hazard - reduce the risk

HAZARD ANALYSIS AND CRITICAL CONTROL POINTS PROGRAMME

This is to certify that
Saint-Gobain Singapore Pte Ltd
Flooring Systems
Weberfloor EP 510 VIB
Weberfloor EP 510 HD
Weberfloor EP 510 MF

are certified as suitable for use in food and beverage facilities that operate in accordance with a HACCP based Food Safety Programme noting the conditions of the certification statement Food Zone Classification: 2022

in accordance with the requirements of HACCP International's Food Safety Certification Systems

16 June 2022 04 September 2022
Issue Date Expiry Date

Certificate Number: IPE-792-BES-R2-16-01

BOARD CLASSIFICATION BASED ON INTENDED USE (RESINOUS FLOORING)

1 Compliance with industry requirements

e.g., HACCP for Food Factory. Antistatic for Semiconductor. SGBC for New Built

2 Osmotic Pressure

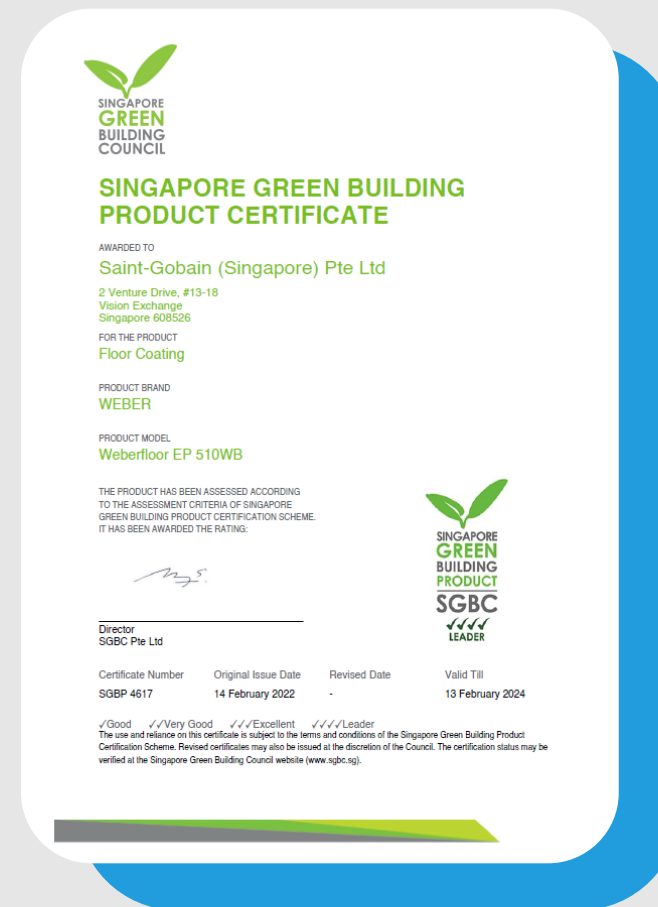
Ground or underground slab.
Any uprising moisture.

3 Slip / Skid Resistance

Any slip resistance requirement or
smooth textured preferred.

4 Works Schedule

Time available for application and
curing of floor. Present and future
maintenance. e.g., fast return to
service for F&B



WEBERFLOOR SYSTEMS STANDARD COLOUR CHART

weber
SAINT-GOBAIN
formerly known as
E-MIX

FLOORING

Weber Industrial Flooring
Standard Colour Chart

COLOURS – EPOXY FLOORING

				
RAL 1013 OYSTER WHITE	RAL 1015 IVORY	RAL 1003 SIGNAL YELLOW	RAL 3001 SIGNAL RED	RAL 3011 BROWN RED
				
RAL 6002 LEAF GREEN	RAL 6017 MAY GREEN	RAL 6019 PASTEL GREEN	RAL 6021 PALE GREEN	RAL 7035 LIGHT GREY
				
RAL 7037 DUSTY GREY	RAL 7038 AGATE GREY	RAL 7040 WINDOW GREY	RAL 7047 TELEGREY	RAL 5012 LIGHT BLUE
				
RAL 5017 TRAFFIC BLUE	RAL 5024 PASTEL BLUE			

* Premium Colour – Price defers and additional lead time may be required.

weber
SAINT-GOBAIN
formerly known as
E-MIX

FLOORING

Weber Industrial Flooring
Standard Colour Chart

COLOURS – WEBERFLOOR PUR MF/HD/WG

				
GREEN	RED	CREAM	BUFF	SKY BLUE
				
LIGHT GREY	GREY	TRAFFIC GREY	BRILLIANT BLUE	ORANGE BROWN

COLOURS – EPOXY FLAKES SYSTEM

				
F8801	F501	F8848	F304	F8841
				
F703	F405	F8834	F305	

The colours shown are approximate. The exact colour of every Weberfloor system will vary depending on the chosen system and local conditions. UV radiation can cause the colour of Weberfloor PUR to yellow and change over time. For further information and product samples, please contact your local Saint-Gobain representative. (Jun '22)

WEBERFLOOR SYSTEMS GUIDE

weber SAINT-GOBAIN
formerly known as **E-MIX**

Selection of products according to requirements

Flooring

	Weberfloor PUR SL	Weberfloor PUR MF	Weberfloor PUR HD	Weberfloor PUR WG	Weberfloor PUR MFAS	Weberfloor PUD Coating	Weberfloor PUR Topcoat	Weberprim WBAS	Weberfloor EP 510 WB	Weberfloor EP 510 WBAS	Weberprim EP 511 PR	Weberfloor EP 536 NV	Weberfloor EP 536 NV SL	Webertec VE	Weberprim EP 500 PR	Weberprim EP 501 GP	Weberprim EP 505 PA
	Polyurethane Concrete	Polyurethane Concrete	Polyurethane Concrete	Polyurethane Concrete	Polyurethane Concrete	Polyurethane Resin	Polyurethane Resin	Epoxy Resin, Water-based	Epoxy Resin, Water-based	Epoxy Resin, Water-based	Epoxy Resin, Water-based	Epoxy Resin, Novolac	Epoxy Resin, Novolac	Vinyl Ester Resin	Epoxy Resin, Solvent-free	Epoxy Resin	Epoxy Resin
Properties																	
Electrostatic /Antistatic																	
Smooth Finish	•	•		•	•	•	•		•	•		•	•	•			
Textured Finish			•						•								
Interior Application	•	•	•	•	•	•	•	•	•	•	•	•	•	•	•	•	•
Outdoor Application						•	•										
Chemical Resistance	•••	•••	•••	•••	•••	•	•		•	•		•••	•••	••••			
Pedestrian Traffic	•	•	•		•	•	•		•	•		•	•	•			
Vehicular Traffic	••	•••	••••		•••	•	••		•			••	•	•			
Market Segment																	
Carpark									•							•	
Manufacturing & Warehouse	•	•			•		•	•		•	•					•	
Food & Beverage		•	•	•	•		•		•		•						
Chemical Processing Plants	•	•	•	•	•		•				•	•	•	•	•	•	•
Aerospace & Automotive	•				•	•	•	•		•					•		
Commercial								•		•					•	•	
Residential																	•

SAINT-GOBAIN (SINGAPORE) PTE LTD
2 Venture Drive, #13-18 Vision Exchange, Singapore 608526
☎ +65 6330 8288 ☎ +65 6330 8289

SAINT-GOBAIN WEBER (M) SDN BHD
No 29 & 31 TIAJ 2/1, Taman Industri Alam Jaya, 42300 Bandar Puncak Alam, Selangor D E, Malaysia
☎ +603 6038 9498/97/87 ☎ +603 6038 9507

SAINT-GOBAIN

weber SAINT-GOBAIN
formerly known as **E-MIX**

Selection of products according to requirements

Flooring

	Weberprim DP	Weberprim EP 502 MP	Weberfloor EP 520 SL	Weberfloor EP 520 SLAS	Weberfloor EP 521 SL	Weberfloor EP 530 HB	Weberfloor EP 550 MS	Weberfloor Mica Flakes	Weberfloor EP Pebble Flooring	Weberfloor CEM MB	E-MIX Floor Hardener	Weberfloor Liquid Floor Hardener	Weberfloor 550	Weberfloor 560	Weberbond Decor Floor	Weberbond Terrazzo Floor
	Epoxy Resin	Epoxy Resin, Solvent-free	Epoxy Resin, Solvent-free	Epoxy Resin, Solvent-free	Epoxy Resin, Solvent-free	Epoxy Resin, Solvent-free	Epoxy Resin, Solvent-free	Epoxy Resin	Epoxy Resin	Epoxy Resin, Cementitious	Dry Shake	Liquid Hardener	Cementitious	Cementitious	Silicate	Silicate
Properties																
Electrostatic /Antistatic				•												
Smooth Finish			•	•	•	•	•	•			•	•	•		•	•
Textured Finish						•	•	•	•							
Interior Application	•	•	•	•	•	•	•	•		•	•	•	•	•	•	•
Outdoor Application							•				•	•			•	•
Chemical Resistance			••	••	••	••										
Pedestrian Traffic		•	•	•	•	•	•	•	•	•	•	•	•	•	•	•
Vehicular Traffic			••	••	••	•	•••			•	•	•	•	•	•	•
Market Segment																
Carpark	•						•			•	•	•				
Manufacturing & Warehouse			•		•	•	•				•	•		•	•	
Food & Beverage																
Chemical Processing Plants						•	•			•	•	•				
Aerospace & Automotive	•	•	•	•	•	•	•			•	•	•				
Commercial	•		•	•	•	•				•			•	•		•
Residential													•	•	•	•

*Full system build up

SAINT-GOBAIN (SINGAPORE) PTE LTD
2 Venture Drive, #13-18 Vision Exchange, Singapore 608526
☎ +65 6330 8288 ☎ +65 6330 8289

SAINT-GOBAIN WEBER (M) SDN BHD
No 29 & 31 TIAJ 2/1, Taman Industri Alam Jaya, 42300 Bandar Puncak Alam, Selangor D E, Malaysia
☎ +603 6038 9498/97/87 ☎ +603 6038 9507

SAINT-GOBAIN

WEBERFLOOR SYSTEMS CHEMICAL RESISTANCE CHART

Weber Industrial Flooring

Chemical Resistance Chart

Weber Industrial Flooring Systems – A Guide to Chemical Resistance

Introduction

This guide is intended to help specifiers and users of **weberfloor systems** to select the optimum product for the chemical exposure conditions likely to be encountered.

The recommendations in the guide are based on laboratory tests.

Three classes of resistance are used:
R – resistant (assuming that reasonable standards of cleanliness are maintained)
L – limited resistant (infrequent spillages are tolerated if the floor is washed down or the spillage evaporates quickly)
NR – not resistant (floor is severely attacked rapidly even by small spillages).

When using the guide, the following factors should be considered:

- These recommendations are for floors.
- They do not apply to **weberfloor systems** used as linings and subject to total or partial immersion. In such cases, resistance will be more limited and should be considered before any **weberfloor system** is specified.

Discoloration & staining:

There are many common chemicals that will stain or discolour the surface of resin floors without causing any deterioration or reduction of properties. Examples: Diluted nitric acid and sodium hydrochloride used in food processing plants and chromic acid widely used in metal plating processes.

Solvents:

A number of aggressive solvents will attack resin floors on long-term exposure but are so volatile that spillages evaporate before any damage to the floor occurs. A typical example is methylene chloride. In these cases a classification of limited resistance is sufficient to provide a serviceable floor.

Secondary containment:

When used in secondary containment areas a classification of limited resistance is in most cases sufficient to provide protection of the underlying substrate for 72 hours. For further information, please contact Weber-E-MIX.

Maximum service temperature:

All **weberfloor systems** have a maximum service temperature which is specified in the individual System Data Sheet. This temperature limit must be respected for all but the most minor spillages.

IMPORTANT

Whilst all reasonable care is taken in compiling technical data on the company's products, all recommendations or suggestions regarding the use of such products are made without guarantee. This is because the conditions of use are beyond the control of the company. It is the customer's responsibility to satisfy himself that each product is fit for the purpose for which he intends to use it. In addition, he must ensure that the actual conditions of use are suitable.

Weber Industrial Flooring

Chemical Resistance Chart

Chemical	Concentration %	Temperature °C	Weberfloor				
			ep 510 wb	ep 530 hb ep 521 sl ep 520 sl as ep 520 sl as pur topcoat	ep 536 nv ep 526 nv sl	pur sl pur mf pur hd pur wg	ep ve
Acetaldehyde	100	20	NR	R	R	R	R
Acetic Acid	10	20	R	R	R	R	R
	10	80	NR	NR	R	R	R
	20	20	L	L	R	R	R
	20	80	NR	NR	L	L	L
	60	20	NR	NR	R	R	R
Acetic Anhydride	100	20	NR	NR	L	L	L
	-	20	L	L	L	L	L
Acetone	100	20	NR	NR	L	L	L
Acetonitrile	100	20	NR	NR	L	L	R
Acrylic Acid	100	20	NR	NR	R	R	R
Adipic Acid	All	20	R	R	R	R	R
Aluminium Chloride	All	20	R	R	R	R	R
Aluminium Sulphate	All	20	R	R	R	R	R
Ammonia (Ammonium Hydroxide)	10	20	R	R	R	R	R
	25	20	L	L	R	R	R
Ammonium Nitrate	All	20	R	R	R	R	R
Ammonium Phosphate	All	20	R	R	R	R	R
Ammonium Sulphate	All	20	R	R	R	R	R
Amyl Acetate	100	20	L	L	R	R	R
Aniline	100	20	L	L	R	R	R
Anilines (Ethylene Glycol)	100	20	R	R	R	R	R
Apple Juice	-	20	R	R	R	R	R
Barium Chloride	All	20	R	R	R	R	R
Barium Sulphate	All	20	R	R	R	R	R
Beer	-	20	R	R	R	R	R
Benzaldehyde	100	20	NR	NR	L	L	R
Benzene	100	20	NR	NR	L	L	R
Benzoic Acid	100	20	L	L	R	R	R
Benzoyl Chloride	100	20	NR	NR	R	R	L
Benzyl Alcohol	100	20	R	R	R	R	R
Bleach	-	20	R	R	R	R	R

Weber Industrial Flooring

Chemical Resistance Chart

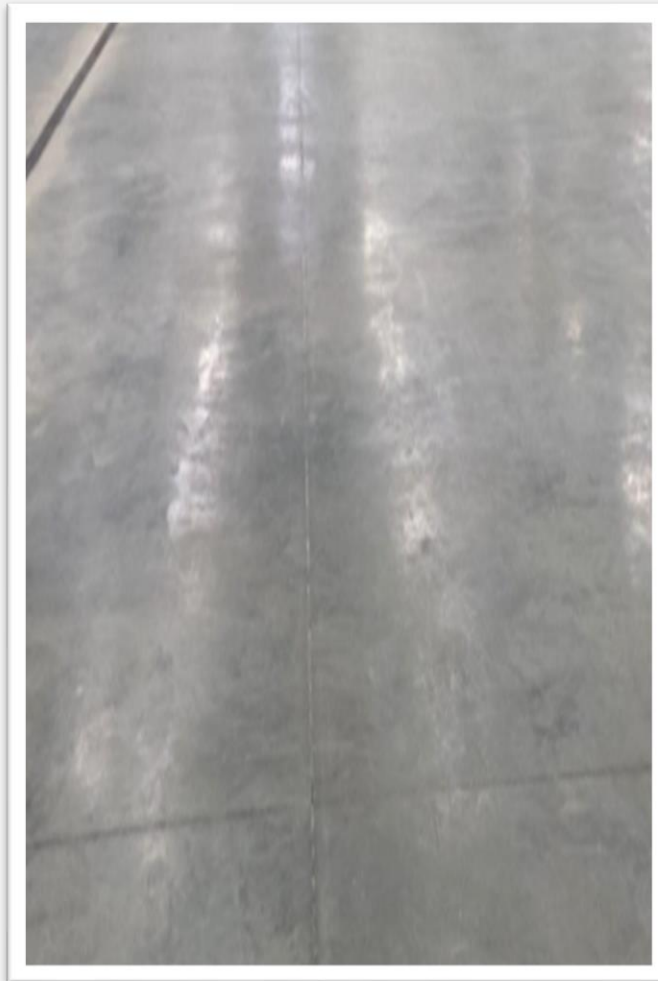
Chemical	Concentration %	Temperature °C	Weberfloor				
			ep 510 wb	ep 530 hb ep 521 sl ep 520 sl ep 520 sl as pur topcoat	ep 536 nv ep 526 nv sl	pur sl pur mf pur hd pur wg	ep ve
Boric Acid	All	20	R	R	R	R	R
Brake Fluid	-	20	R	R	R	R	R
Brine – Chlorinated	All	80	NR	NR	L	L	L
Brine (Sodium Chloride)	All	20	R	R	R	R	R
Butanol	100	20	R	R	R	R	R
Butler	-	20	R	R	R	R	R
Butyl Acetate	100	20	L	L	R	R	R
Butyric Acid	100	20	R	R	R	R	R
Calcium Chloride	All	20	R	R	R	R	R
Calcium Hydroxide	All	20	R	R	R	R	R
Calcium Hypochlorite	All	20	R	R	R	R	R
Capric (Decanoic) Acid	100	20	R	R	R	R	R
Caproic Acid	100	20	NR	NR	R	R	R
Caprolactam	100	20	NR	NR	R	R	R
Caprylic (Octanoic) Acid	100	20	R	R	R	R	R
Carbon Disulphide	100	20	NR	NR	L	L	L
Carbon Tetrachloride	100	20	R	L	R	R	R
Chloroacetic Acid	10	20	R	R	R	R	R
	50	20	NR	NR	L	L	R
Chloroform	100	20	NR	NR	L	L	L
Chromic Acid	20	20	L	L	R	R	R
Cinnamalddehyde	100	20	L	L	R	R	R
Citric Acid	20	20	R	R	R	R	R
	20	60	L	L	R	R	R
	50	20	L	L	R	R	R
Copper(II) Sulphate	All	20	R	R	R	R	R
Cyclohexane	100	20	L	R	R	R	R
Cyclohexanone	100	20	NR	NR	R	R	R
Detergents – Acidic	All	20	R	R	R	R	R
	All	80	NR	NR	R	R	R
Detergents – Alkaline	All	20	R	R	R	R	R
	All	80	NR	NR	R	R	R
Dibutyl Phthalate	100	20	R	R	R	R	R

Weber Industrial Flooring

Chemical Resistance Chart

Chemical	Concentration %	Temperature °C	Weberfloor				
			ep 510 wb	ep 530 hb ep 521 sl ep 520 sl ep 520 sl as pur topcoat	ep 536 nv ep 526 nv sl	pur sl pur mf pur hd pur wg	ep ve
Dichlorobenzene	100	20	NR	NR	L	L	R
Diethyl Ether	100	20	L	R	R	R	R
Diethylene Glycol	100	20	R	R	R	R	R
Di-isopropylamine	100	20	R	R	R	R	R
Dimethylformamide	100	20	NR	NR	NR	NR	R
Dioctyl Phthalate	100	20	R	R	R	R	R
Ethanol	100	20	NR	L	R	R	R
Ethyl Acetate	100	20	NR	NR	L	L	R
Ethyl Glycol Acetate	100	20	NR	NR	R	R	R
Ethylene Dichloride	100	20	NR	NR	L	L	L
Ethylene Glycol	100	20	R	R	R	R	R
Fats – Animal & Vegetable	-	20	R	R	R	R	R
	-	80	NR	NR	R	R	R
Fish Oils	-	20	R	R	R	R	R
	-	80	NR	NR	R	R	R
Fluoroacetic Acid	All	20	R	R	R	R	R
Formaldehyde (Formalin)	27	20	R	R	R	R	R
	20	20	NR	L	R	R	R
Formic Acid	90	20	NR	NR	L	L	R
Fumaric Acid	All	20	R	R	R	R	R
Gasoline	-	20	L	R	R	R	R
Glucose	All	20	R	R	R	R	R
Glycerol	100	20	R	R	R	R	R
Glycolic Acid	100	20	R	R	R	R	R
Hexane	100	20	R	R	R	R	R
Hydrobromic Acid	48	20	L	L	R	R	R
	5	20	R	R	R	R	R
Hydrochloric Acid	15	20	R	R	R	R	R
	15	60	NR	NR	R	R	R
	27	20	R	R	R	R	R
	27	60	NR	NR	L	L	R
	10	20	L	L	R	R	R
Hydrofluoric Acid	40	20	NR	NR	L	L	L

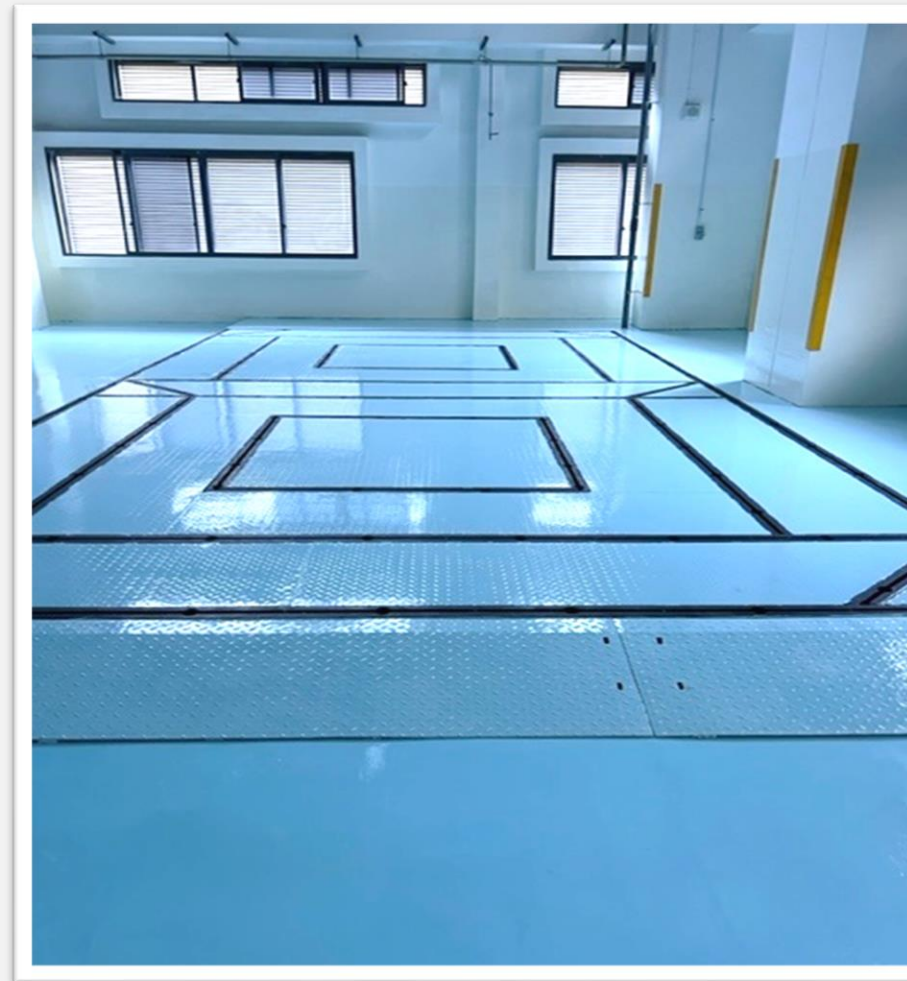
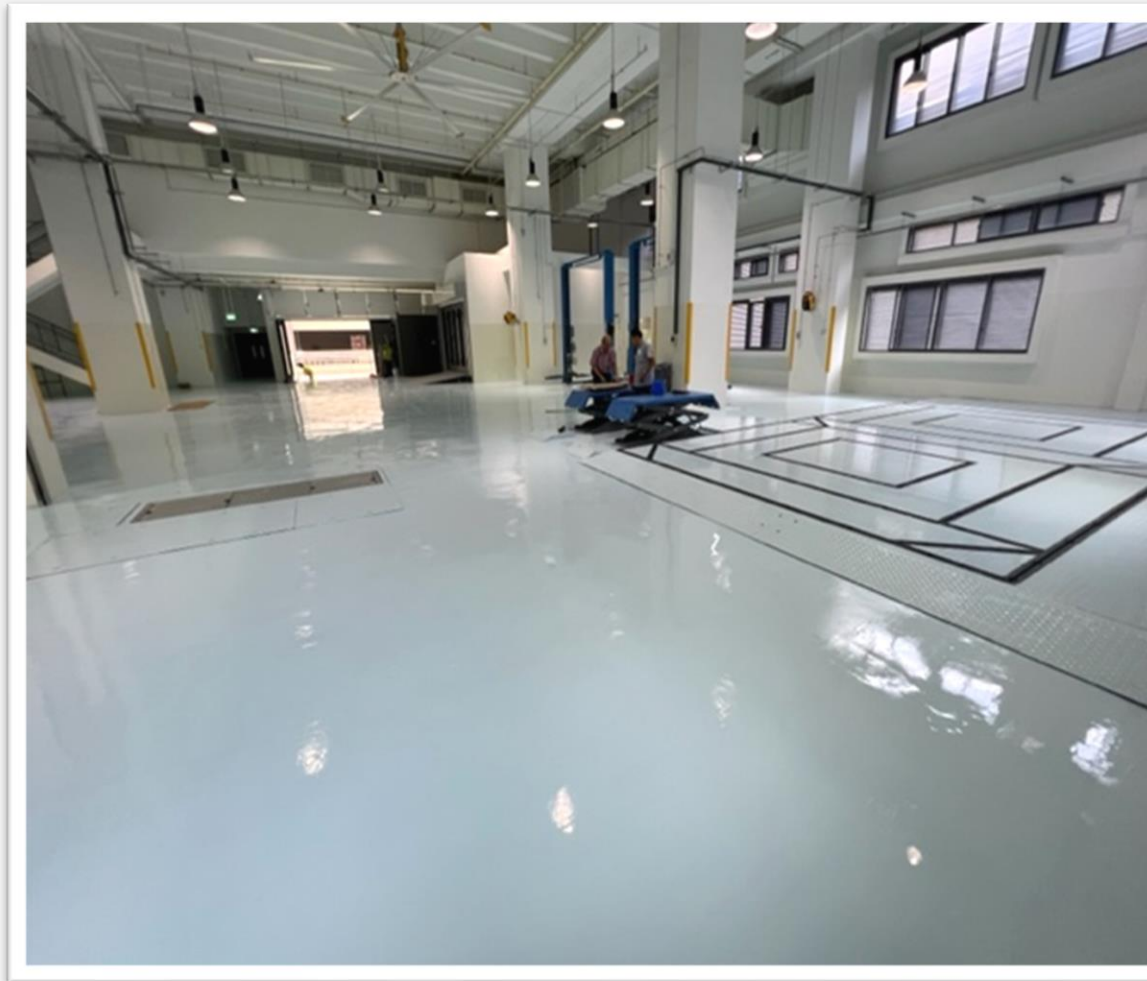
WEBERFLOOR LIQUID FLOOR HARDENER & DRY SHAKE



**Pictures strictly for internal use only*

AUTOMOTIVE WORKSHOP @ DEFU SINGAPORE

WEBERFLOOR EP 500 PR & 530 HB



SGBP 4616

**Pictures strictly for internal use only*

WAREHOUSE @ TUAS SINGAPORE

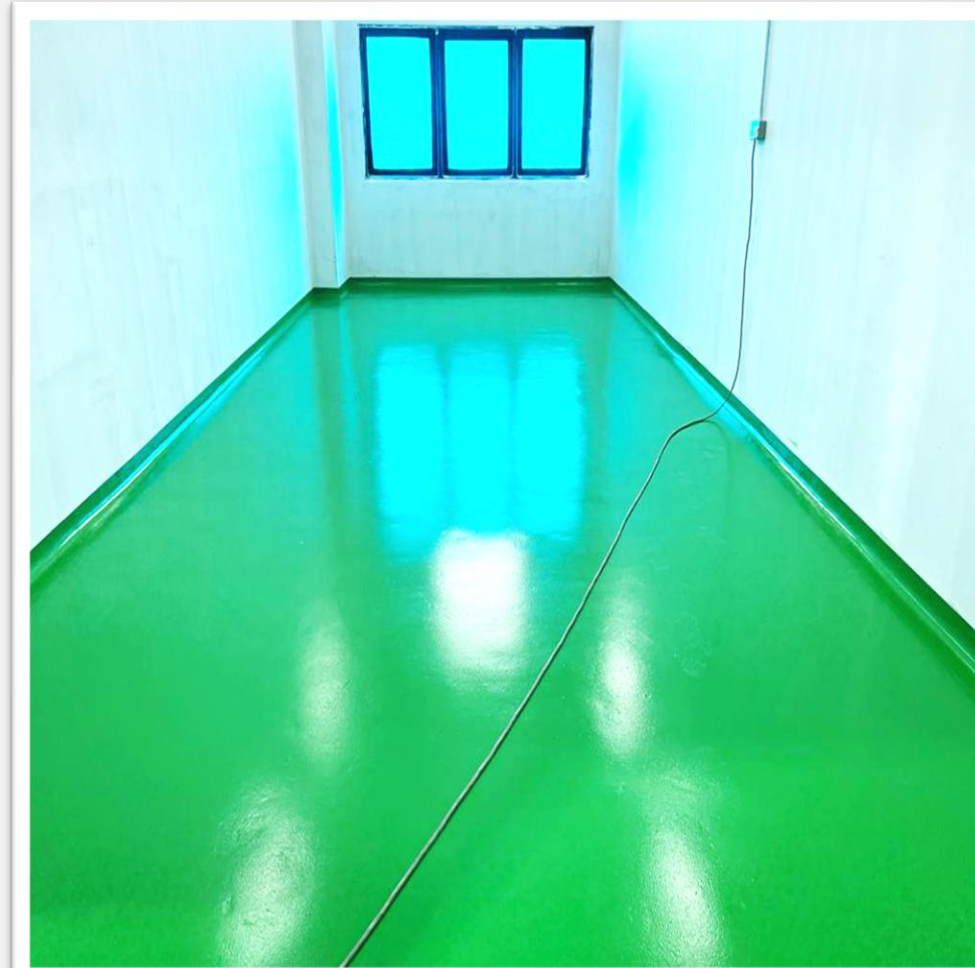
WEBERFLOOR EP 550 MS & EP 530 HB



SGBP 4616

**Pictures strictly for internal use only*

WEBERFLOOR EP 510 WB



SGBP 4617

**Pictures strictly for internal use only*

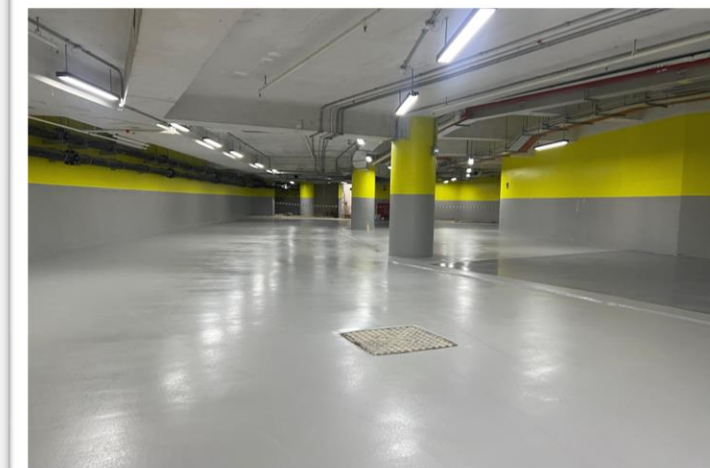
WEBERFLOOR EP 512WB AS



**Pictures strictly for internal use only*

CARPARK @ CHOA CHU KANG SINGAPORE

WEBERFLOOR CEM MB, EP 510 WB, WEBERDRY ES 113



SGBP 4617

**Pictures strictly for internal use only*

AUTOMOTIVE WAREHOUSE @ TANJUNG MALIM MALAYSIA

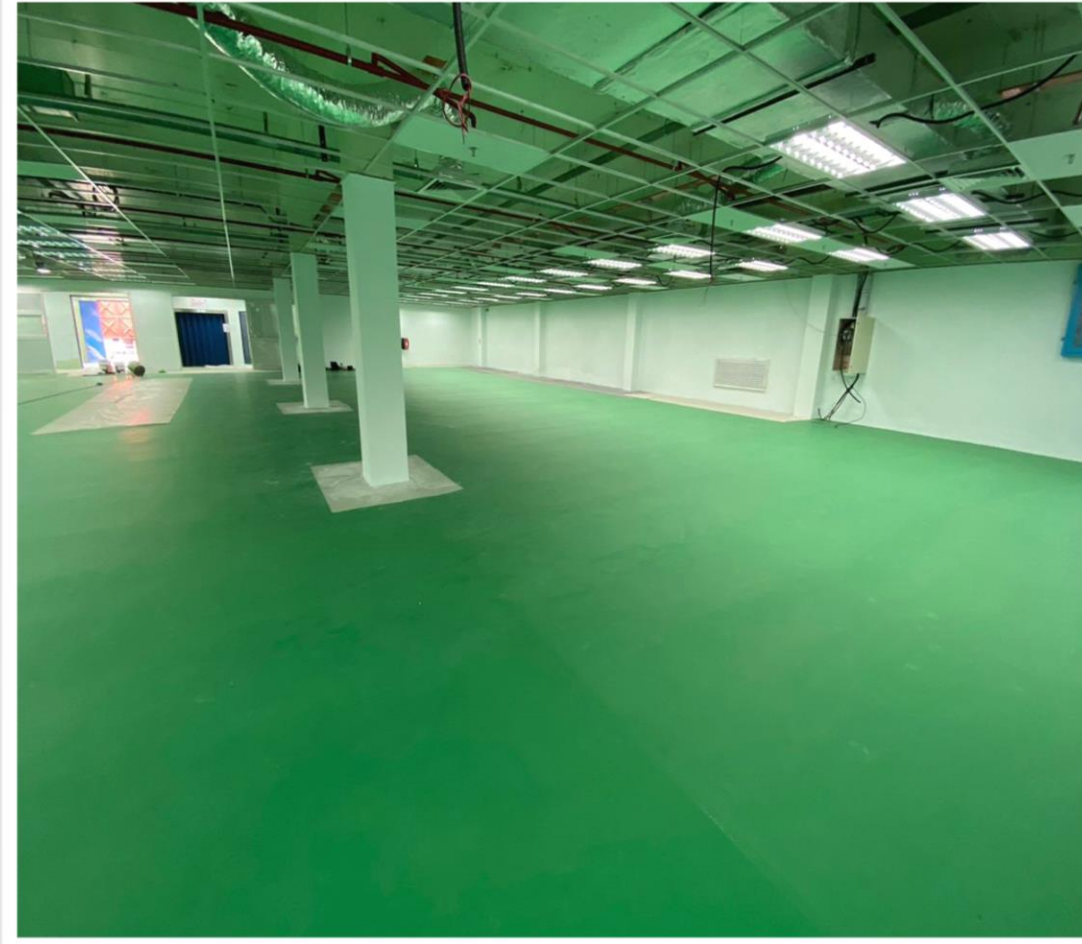
WEBERFLOOR PUR SL



**Pictures strictly for internal use only*

BIOENERGY PLANT @ NILAI MALAYSIA

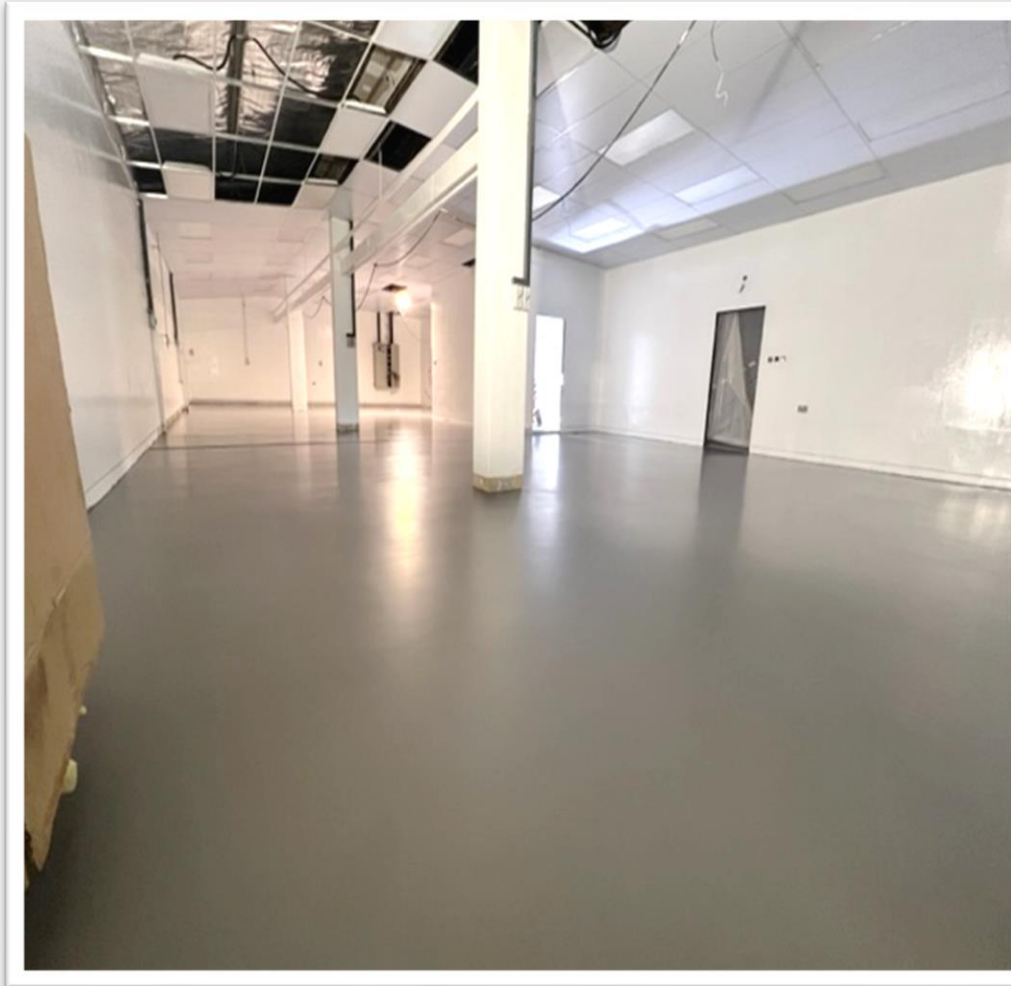
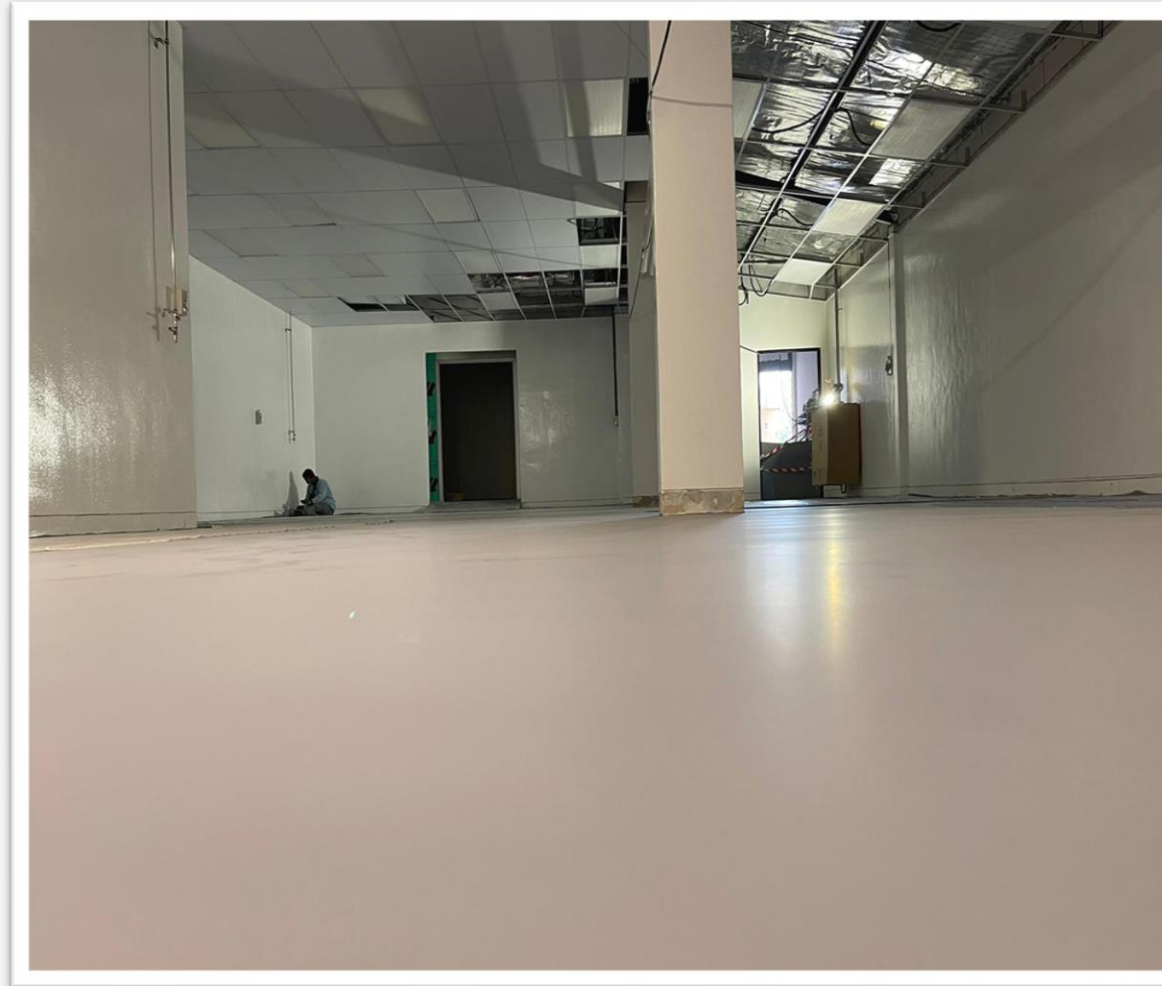
WEBERFLOOR PUR MF



**Pictures strictly for internal use only*

FOOD FACTORY @ WAN LEE SINGAPORE

WEBERFLOOR PUR MF



**Pictures strictly for internal use only*

FOOD FACTORY @ BEDOK SINGAPORE

WEBERFLOOR PUR MF & WEBERFLOOR PUR HD



Weberfloor PUR MF



Weberfloor PUR HD



**Pictures strictly for internal use only*

WEBERFLOOR SPORTS COURT FLOORING SYSTEM



**Pictures strictly for internal use only*

WEBERBOND SYSTEMS OVERVIEW

MINERAL SILICATE BINDING TECHNOLOGY

We use **latent hydraulic** and **pozzolanic raw materials** which are accrued during **different industrial processes** and **activate them chemically**, for example, with some of the following products:



*ALL THESE MATERIALS ARE 100 % ORGANIC
AND BASED ON SILICATES.*

**Highly resistant against corrosion in
chemicals load environments
(storage, transport, handling)**

BENEFITS

- **No shrinkage and no swelling**
- **Chemical & salt resistance**
- **UV resistant**
 - No fading of colors. No chipping.
- **High abrasion resistance**
 - 24 hours after application
- **Fast and easy application**
 - Simple mixing with water
- **Water vapour permeable**
 - No blistering and is not moisture sensitive
- **No efflorescence**
 - Even in high moisture, acidic or alkaline environments
- **Workable on wide range of surfaces**
 - Green concrete, tiles, glass, ceramics & gypsum
- **Pumpable**
 - Can be applied by screed pump machines
- **Flexible applications**
 - Terrazzo, single tone
- **Burnishable & Polishable**
 - Matt or Satin surface

WEBERBOND DÉCOR FLOOR

INDUSTRIAL SELF-SMOOTHING FLOORING

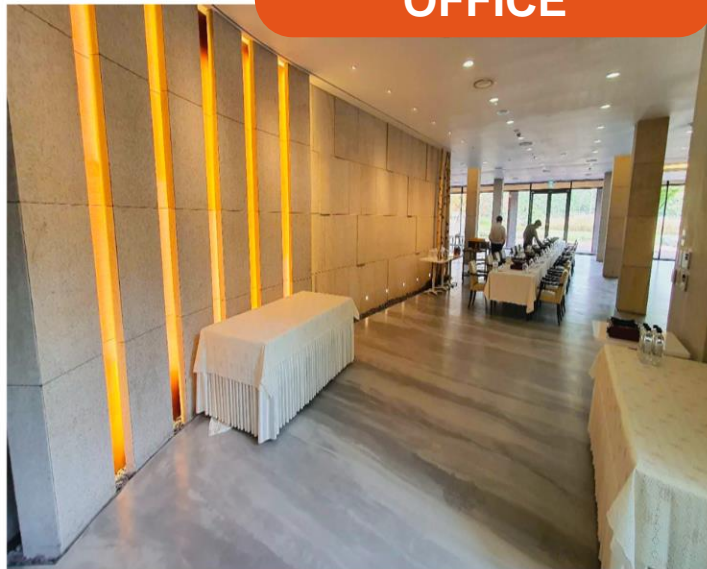
Weberbond Décor Floor is a **professional grade self-smoothing product** mainly for the purpose of creating industrial floors but also can be used to make decorative floors.

It is designed to meet **high industrial floor standards** where **high abrasion resistance** is required, as well as sustaining some **chemical loads**.

FACTORY



OFFICE



OFFICE



WAREHOUSE



WEBERBOND DÉCOR FLOOR

CONSUMPTION (AVERAGE THICKNESS OF 3MM) – GENERAL GUIDE



Binder: **25kg**



Pigment: **<1%**



Water: **18 – 19%**



Self-smoothing: **4.6m²**

Technical Properties

Original Colour	Light Grey
Finish Appearance	Matt
Powder / Surface Fineness	Fine
Bonding	Good
Flexural Strength	> 8 MPa
Compressive Strength	> 40 MPa
Abrasion Resistance	Good
Salt & Chemical Resistance	Very Good
Typical Thickness Application	3mm onwards

OFFICE

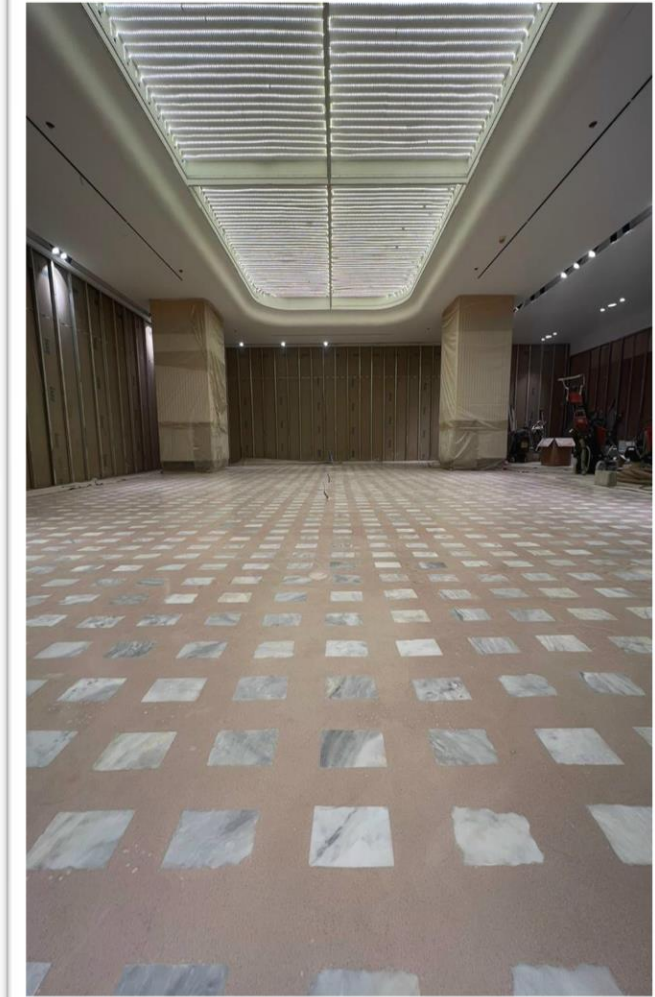


WEBERBOND TERRAZZO

MINERAL SILICATE TERRAZZO

Manufactured with carefully selected high-quality inorganic materials of superior properties. In the process of applying or using the product, there is no safety concern, **non-toxic** to humans, animals and the environment.

Weberbond Terrazzo is a high-end quality product **for creating various terrazzo surfaces for decoration and protection of walls, ceilings, floors** with high aesthetic, sophistication, elegance, and sustainability needs



WEBERBOND TERRAZZO

CONSUMPTION (AVERAGE THICKNESS OF 8MM) – GENERAL GUIDE



Binder: **25kg**



Aggregates: **10.7kg sand
+ 35.6kg stone**



Pigment: **<1%**



Water: **18 – 19%**

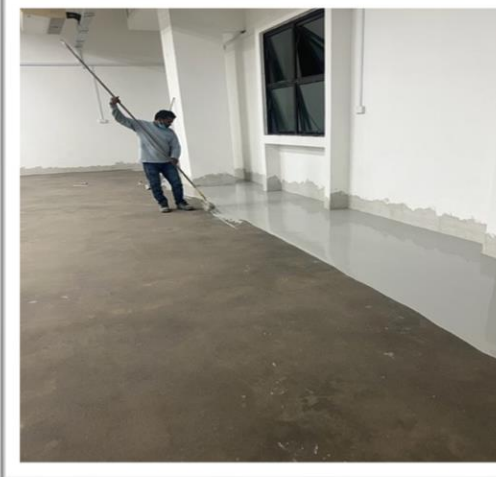
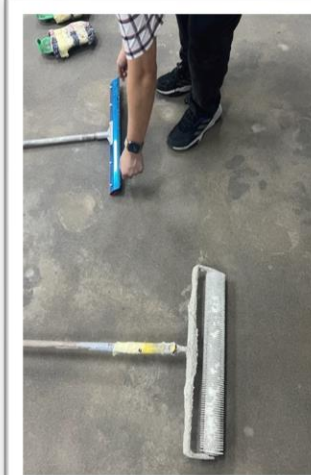
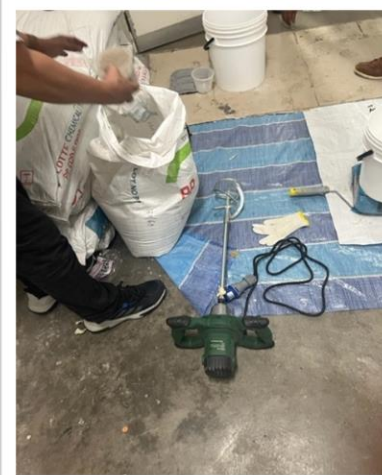


Terrazzo: **2.85m²**

Properties	Light Grey Standard	White Version
Original Colour	Light Grey	Off - White
Finish Appearance	Matt	Bright
Powder / Surface Fineness	Fine	Fine
Bonding	Good	Very Good
Flexural Strength	> 8 MPa	> 10 MPa
Compressive Strength	> 40 MPa	> 40 MPa
Abrasion Resistance	Good	Very Good
Salt & Chemical Resistance	Very Good	Excellent
Typical Thickness Application	8mm	6mm

WAREHOUSE @ PASIR PANJANG SINGAPORE

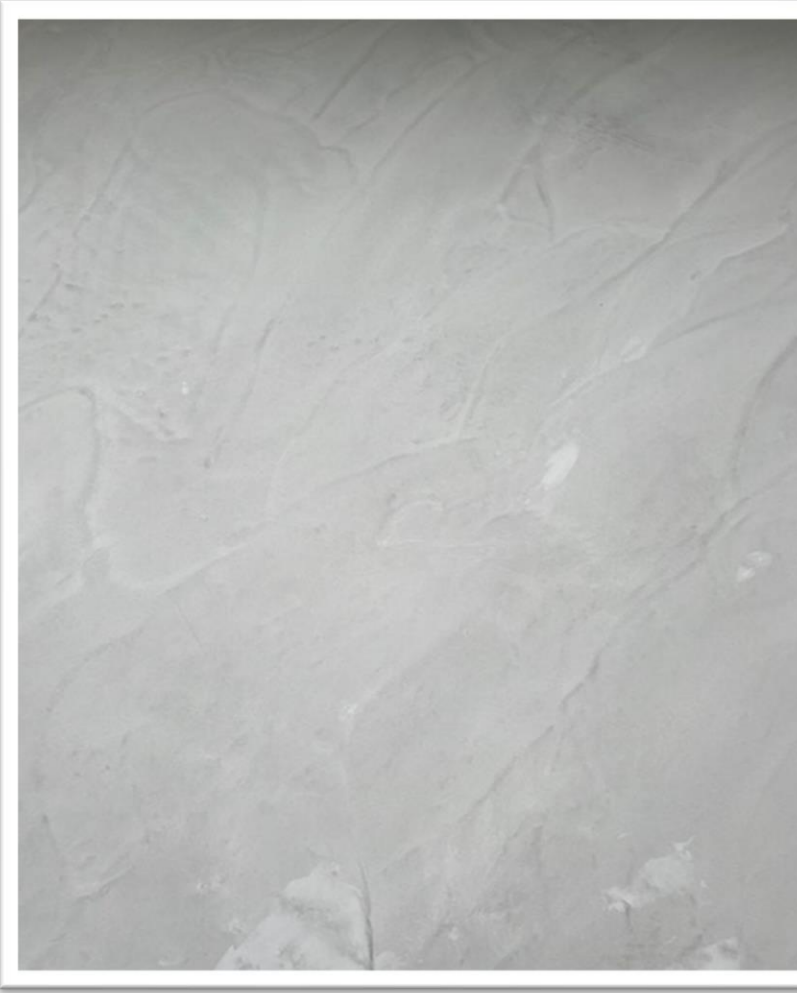
WEBERBOND DÉCOR FLOOR



**Pictures strictly for internal use only*

RESIDENTIAL LANDED @ JURONG SINGAPORE

WEBERBOND DÉCOR FLOOR & WALL



**Pictures strictly for internal use only*

RESORT PROJECT @ MEDITERRANEAN

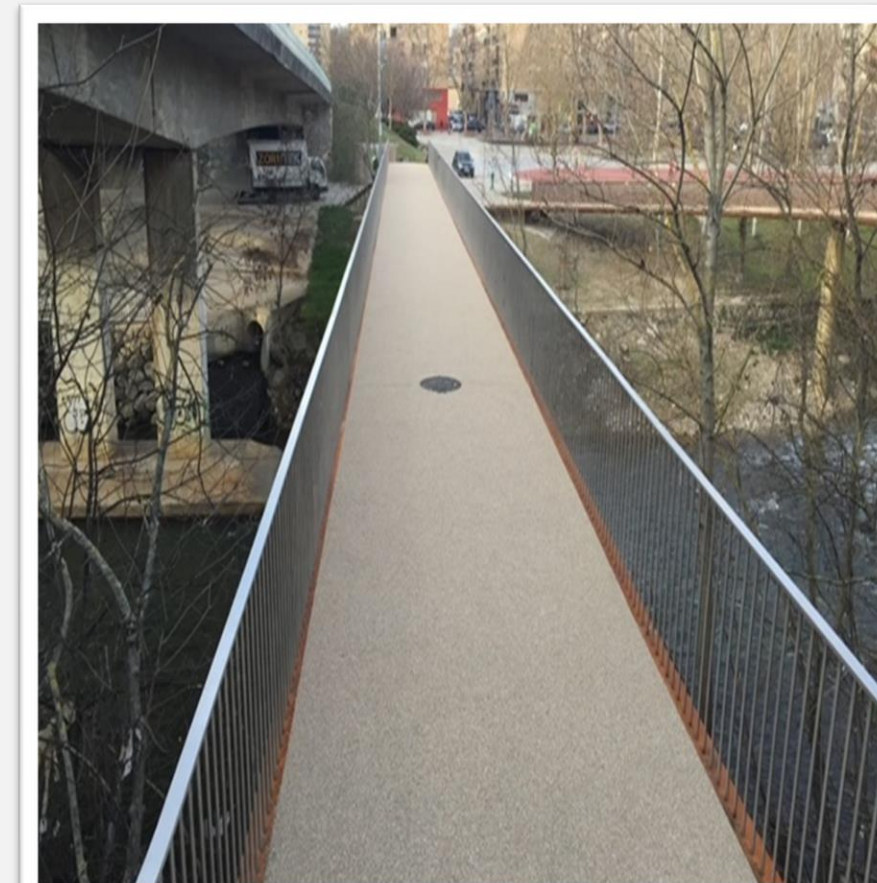
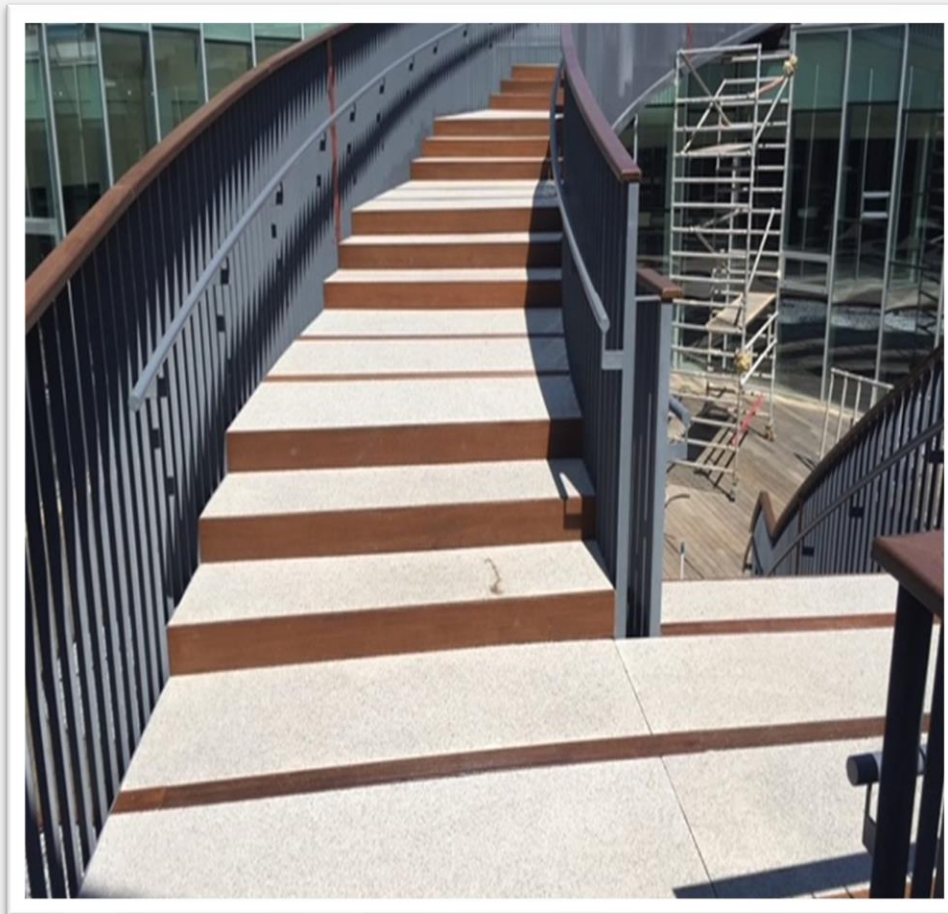
WEBERBOND SYSTEM



**Pictures strictly for internal use only*

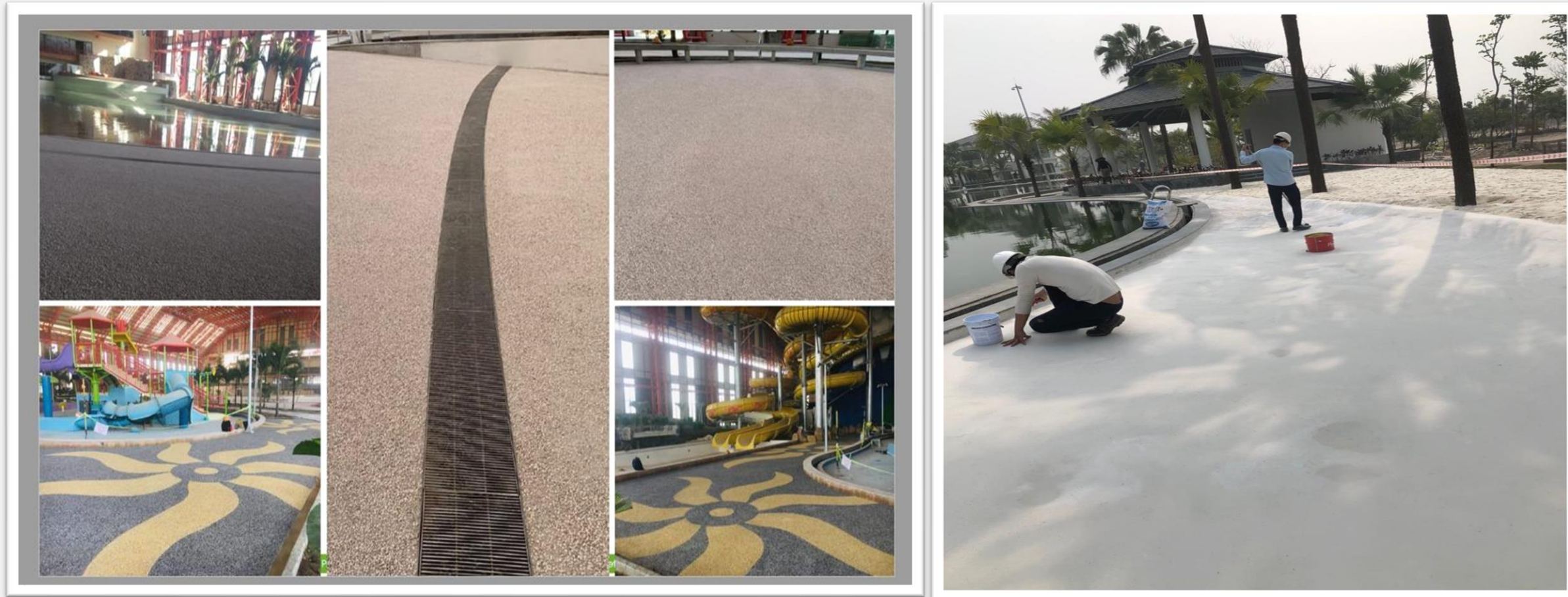
OUTDOOR STAIRCASE & WALKWAY

WEBERBOND SYSTEM



**Pictures strictly for internal use only*

WEBERBOND SYSTEM



**Pictures strictly for internal use only*

OUTDOOR RESTAURANT COURTYARD & CARPARK

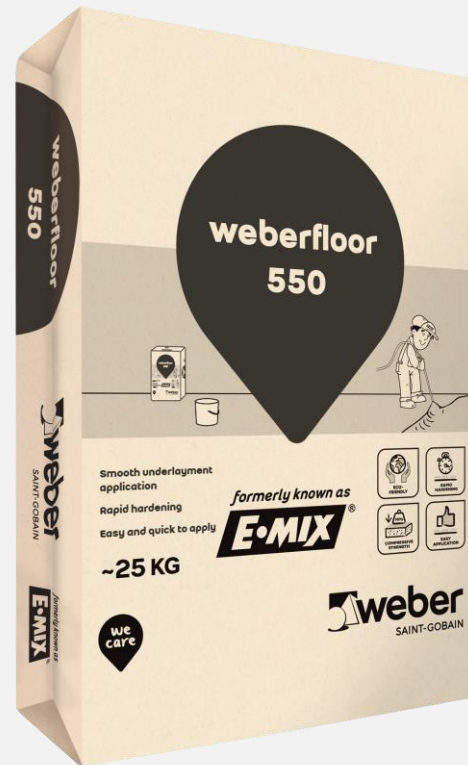
WEBERBOND TERRAZZO SYSTEM



**Pictures strictly for internal use only*

WEBERFLOOR CEMENTITIOUS UNDERLAYMENT

WEBERFLOOR 550



A fast-hardening self-levelling floor surfacing system, preblended, dry powder for application at a thickness of 3 – 10mm.

A smooth underlayment to receive vinyl sheets, carpet and other finishing.

Technical Data & Physical Properties

Colour	Grey
Component	OPC, fast setting cement, graded sand, polymer, non-reactive aggregate, and other chemical additives
Density	Approx. 2.0 kg/litre (dry) Approx. 2.1 kg/litre (wet)
Thickness	3 – 10mm
Water Demand	Approx. 5 – 5.5 litres / 25kg bag
Time for Foot Traffic	Approx. 2 hrs
Compressive Strength ASTM C349	16.2 N/mm ² (1 day) 23.8 N/mm ² (7 days) 32.4 N/mm ² (14 days)
Flexural Strength ASTM C348	4.69 N/mm ² (1 day) 5.38 N/mm ² (7 days) 7.17 N/mm ² (14 days)
pH Value	Approx. 11

WEBERFLOOR CEMENTITIOUS OVERLAYMENT



WEBERFLOOR 560



A fast-hardening self-levelling floor surfacing system, designed as a smooth overlayment for concrete floors.

It has excellent abrasion resistance, chemical resistance and high compressive strength.

Technical Data & Physical Properties

Colour	Grey
Component	OPC, fast setting cement, graded sand, polymer, non-reactive aggregate, and other chemical additives
Density	Approx. 2.0 kg/litre (dry) Approx. 2.1 kg/litre (wet)
Thickness	3 – 10mm
Water Demand	Approx. 5.3 – 5.8 litres / 25kg bag
Time for Foot Traffic	Approx. 2 hrs
Compressive Strength ASTM C349	16.2 N/mm ² (1 day) 23.8 N/mm ² (7 days) 32.4 N/mm ² (14 days)
Flexural Strength ASTM C348	4.69 N/mm ² (1 day) 5.38 N/mm ² (7 days) 7.17 N/mm ² (14 days)
Abrasion Resistance ASTM D4060	1350 (wear index)
Linear Shrinkage ASTM C531	0.014% (7 days) 0.026% (28 days)



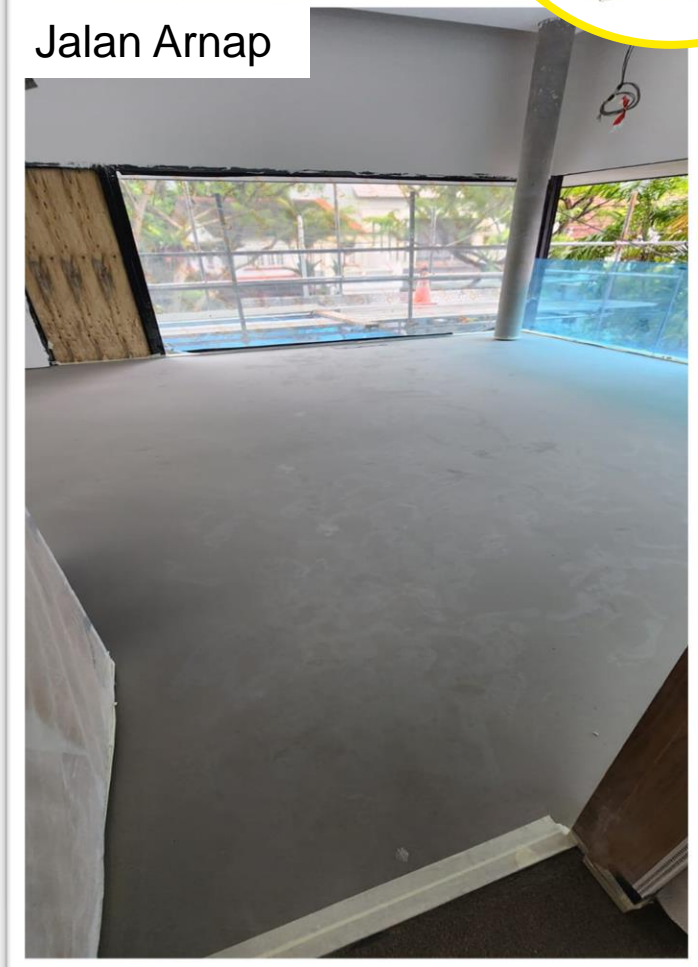
WEBERFLOOR 560



Far East Bank Building



Jalan Arnep



Mandai Bird Park

**Pictures strictly for internal use only*

SUMMARY

Each technology has its own properties and advantages.

Different types of projects:

**Carparks (basement, intermediate or roof),
food factory (new built or live) ,
new built (specifications),
renovation (owner's expectations) & etc.**

**Requirements of the new-built projects: Green Mark, Warranty,
Budget allocation etc.**

With a wide range of flooring systems available in the market, it may be challenging to find the best option for a given application.

By understanding the project requirements and the differences between each one, you'll be easily able to decide.



**THANK YOU
& HAVE A
GREAT DAY!**