



HOW TO PROPERLY INSTALL WATERPROOFING SYSTEM

WATERPROOF TO LAST

BY NADIAH BAHARUDIN

WATERPROOF TO LAST

HOW TO PROPERLY INSTALL WATERPROOFING SYSTEM

WHAT IS WATERPROOFING?



WATERPROOFING OF CONSTRUCTIONS DESCRIBES A **PROCEDURE** WHERE BUILDING STRUCTURES ARE **PROTECTED** FROM WATER INGRESS TO **AVOID** DAMAGES OR DESTRUCTIVE CAUSES.

WATERPROOFING FAILURE DUE TO:

- Lack of substrate preparation.
- Installation or method error.
- Bad specifications / wrong selection of products and wrong design, especially in detailing.
- Lack of quality assurance / quality check.
- Poor workmanship.
- Hydrostatic pressure from substrate.
- Ignoring the need for maintenance.

SIGNS OF LEAKAGES

- A sudden, unexplained spike in water & electricity bills.
- Damp carpet or warped hard flooring.
- Mold or mildew (visible or just the smell).
- Visible on the ceiling or wall.

TO ELIMINATE WATERPROOFING FAILURE, IT IS IMPORTANT TO:

- Select the most suitable product for intended application.
- Match the appropriate products to the project specifications.
- Pay attention to surface preparation and detailing.
- Select qualified waterproofing specialist for the installation.
- Applied moisture barrier waterproofing membrane to substrate to prevent from hydrostatic pressure.
- Regularly check or inspect any elements where water may be able to enter the building.

TYPES OF WATERPROOFING

- Liquid Applied Waterproofing
- Preformed / Sheet Waterproofing Membrane
- Integral Waterproofing
- Spray Applied Waterproofing

WEBERDRY PRODUCTS

- **Cementitious**
 - Weberdry WP 100-SP
 - Weberdry WP 200-F
 - Weberdry WP 300-E
- **Liquid Applied**
 - Weberdry BTU Coat
 - Weberdry FLEXO Coat
 - Weberdry FPM Coat
 - Weberdry FUD Coat
 - Weberdry PUR Seal
- **Membrane**
 - Weberdry E3000
 - Weberdry TORCH 180
 - Weberdry TPO
 - Weberdry PVC
 - Weberdry HDPE
- **Crystallization**
 - Weberdry C2-100
 - Weberdry C3-100

BEST PRACTICES FOR LIQUID APPLIED WATERPROOFING

- Allowing time for proper curing time.
- Additional 2nd / 3rd coat application required.
- Ensuring uniform coverage.
- Ensuring reinforcing fabric is used, especially for coving areas and over cracks (Fiber mesh).
- Ensuring a desired film thickness is achieved by using a wet film gauge.

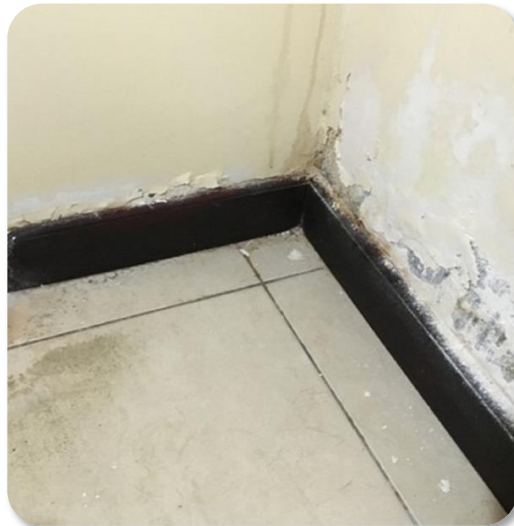


WHAT IS WATERPROOFING?

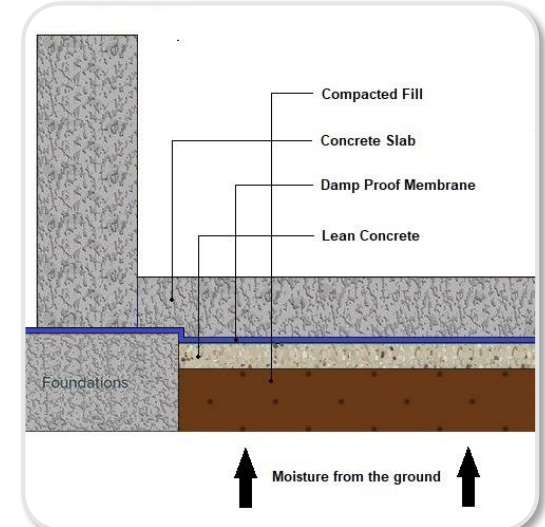


WATERPROOFING OF CONSTRUCTIONS DESCRIBES A **PROCEDURE** WHERE BUILDING STRUCTURES ARE **PROTECTED** FROM WATER INGRESS TO **AVOID** DAMAGES OR DESTRUCTIVE CAUSES.

WATERPROOFING FAILURE DUE TO:



- Lack of substrate **preparation**.
- Installation or **method** error.
- Bad specifications / **wrong selection** of products and wrong design, especially in detailing.
- Lack of **quality assurance** / quality check.
- Poor **workmanship**.
- Hydrostatic **pressure** from substrate.
- Ignoring the need for **maintenance**.



WATERPROOFING FAILURE DUE TO:



- Application to an **uneven, wet, contaminated** surface.
- Lack of priming or **insufficient priming**.
- Insufficient **coverage**.
- Faulty **overlaps**.
- **Puncturing** or tearing.
- **Deterioration** due to weathering.



SIGNS OF LEAKAGES



- A sudden, unexplained **spike in water & electricity bills**.
- Usually occurs in water retention structures on the ground and cannot be seen.



- **Damp carpet** or warped hard flooring.
- Damp carpet or warped hard flooring.



- Mold or mildew (visible or just the **smell**).
- Visible on the ceiling or wall.

HOW TO DETECT LEAKAGES

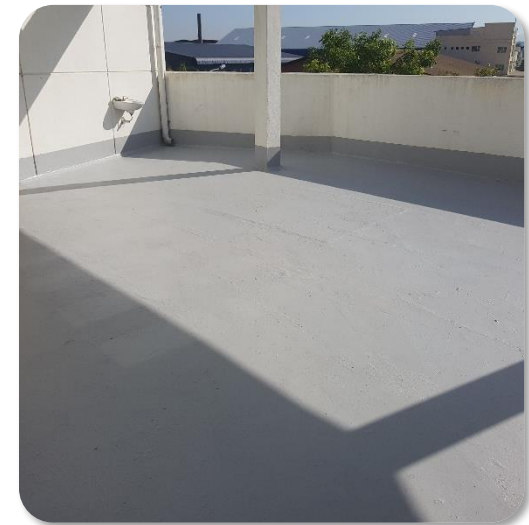


- Moisture meters are used to measure the percentage of water in each substance.

- An infrared camera is a non-contact device that detects infrared energy (heat) and converts it into an electronic signal.

TO ELIMINATE WATERPROOFING FAILURE, IT IS IMPORTANT TO:

- Select the most **suitable product** for intended application.
- Match the **appropriate products** to the project specifications.
- Pay attention to **surface preparation** and detailing.
- Select qualified waterproofing **specialist** for the installation.
- Applied **moisture barrier** waterproofing membrane to substrate to prevent from hydrostatic pressure.
- **Regularly check** or inspect any elements where water may be able to enter the building.



TYPES OF WATERPROOFING



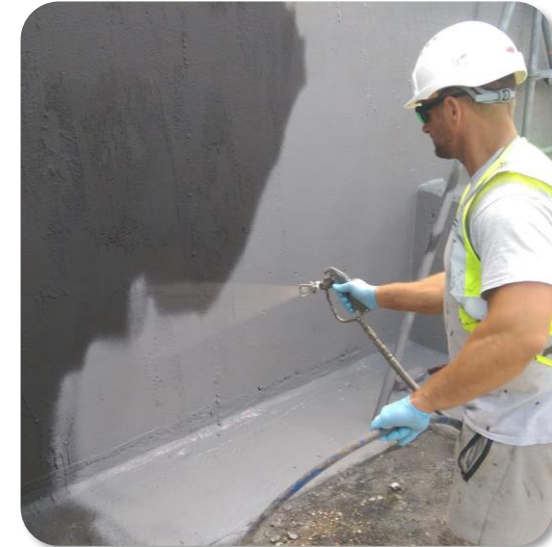
- Liquid Applied Waterproofing



- Preformed / Sheet Waterproofing Membrane



- Integral Waterproofing



- Spray Applied Waterproofing

WEBERDRY PRODUCTS



Cementitious

- Weberdry WP 100-SF
- Weberdry WP 200-F
- Weberdry WP 300-E



Liquid Applied

- Weberdry BITU Coat
- Weberdry FLEXI Coat
- Weberdry PUM Coat
- Weberdry PUD Coat
- Weberdry PUR Seal



Membrane

- Weberdry S3000
- Weberdry TORCH 166
- Weberdry TPO
- Weberdry PVC
- Weberdry HDPE

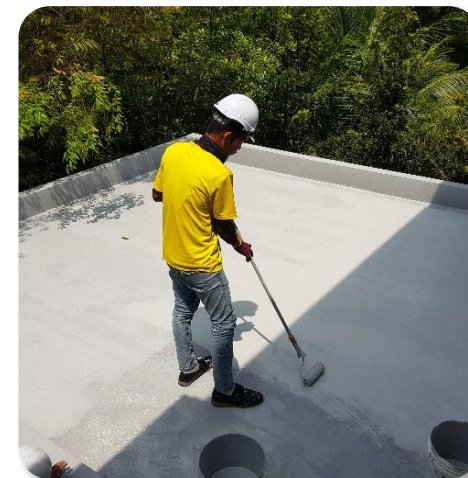


Crystallization

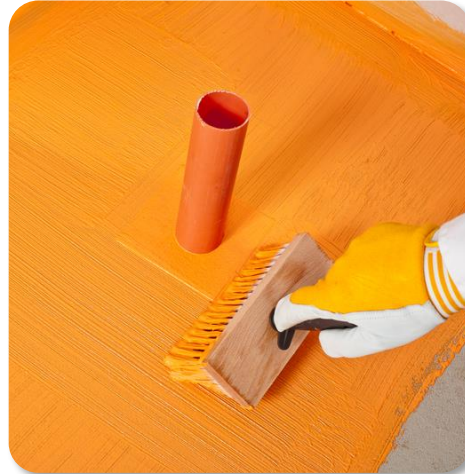
- Weberdry CA 190
- Weberdry CS 195

BEST PRACTICES FOR LIQUID APPLIED WATERPROOFING

- Allowing time for **proper curing time.**
- Additional **2nd / 3rd coat application** required.
- Ensuring **uniform coverage.**
- Ensuring **reinforcing fabric** is used, especially for coving areas and over cracks.(Fiber mash)
- Ensuring a **desired film thickness** is achieved by using a wet film gauge.

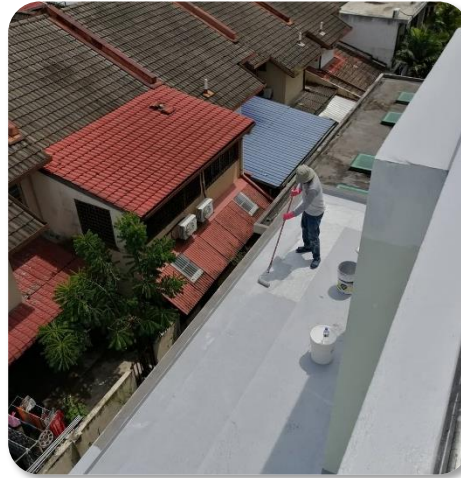


APPLICATION METHOD FOR LIQUID APPLIED WATERPROOFING



- Using **spraying** method
- Using **brushing** method
- Using **roll on** method

AREA OF APPLICATION FOR LIQUID APPLIED WATERPROOFING



ARCYLIC WP MEMBRANE:

- RC Flat Roof,
- Terrace Houses Balcony for exposed system

CEMENTITIOUS WP MEMBRANE:

- Bathroom
- Tanking



PU WP MEMBRANE:

- Planter Boxes
- Lift pits
- Retaining wall

AREA OF APPLICATION FOR LIQUID APPLIED WATERPROOFING



PU WP MEMBRANE:

- Planter Boxes for Landscaping
- Lift pits
- Retaining wall



- Exposed Trafficable Polyurethane WP Membrane for RC Roof application

BEST PRACTICES PREFORMED SHEET MEMBRANE

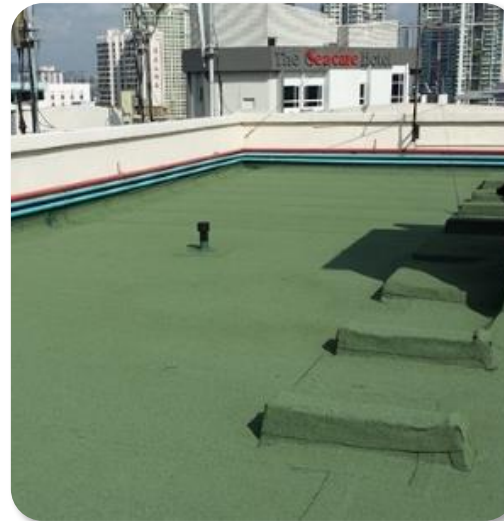
- Proper **surface preparation**.
- Ensure **substrate is dry**.
- Ensuring uniform bond of sheet to substrate – **proper adhesive** application.
- Ensuring **seam and corners are watertight** and correctly sealed – proper seam and sealant application.
- Ensuring the edges for side 50mm & for end 100mm **overlapping** according to method of statement.



PREFORMED SHEET MEMBRANE FOR TORCH ON

EXPOSED SYSTEM:

- 4.0mm A.P.P
(Atactic Polypropylene)
mineral coated
**torched applied
membrane**



PREFORMED SHEET MEMBRANE FOR TORCH ON

CONCEALED SYSTEM:

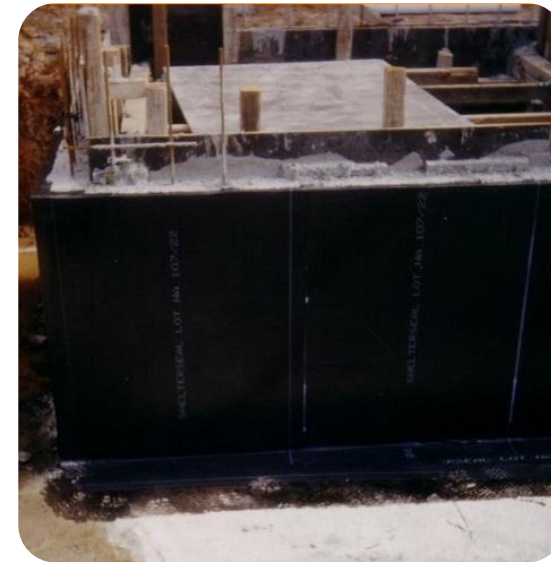
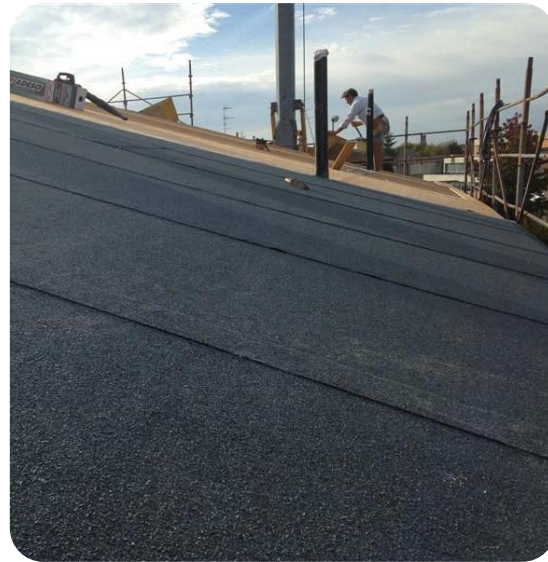
- 3.0mm A.P.P. torched applied membrane



PREFORMED SHEET MEMBRANE FOR SELF ADHESIVE (SBS- Styrene- Butadiene-Styrene)



- Installation under roof tiles



- Installation below grade / substructure

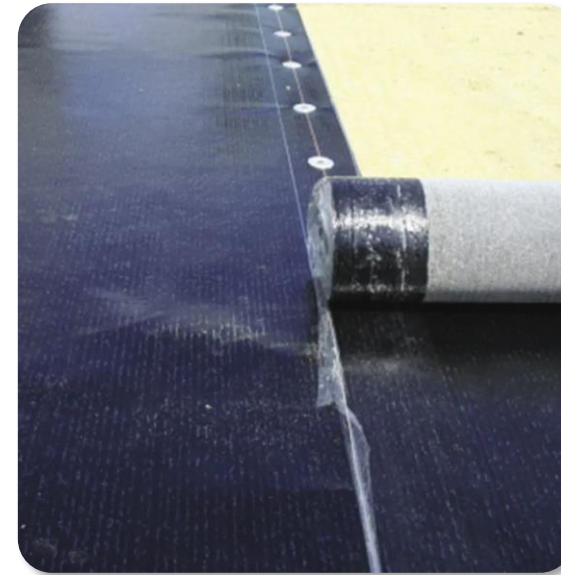
PREFORMED SHEET MEMBRANE FOR TPO (Thermoplastic Polyolefin) PVC (Polyvinyl Chloride)

- Fully Adhered System
- Saiz in 2x 20m
- Single-ply reflective roofing membrane



APPLICATION FOR PREFORMED SHEET MEMBRANE TPO (Thermoplastic Polyolefin) PVC (Polyvinyl Chloride)

- Mechanically Fixed System
- Bonding adhesive
- Heat-welded using heat weld machine





THANK YOU

