

MALAYSIA'S LEADING **FIBRE**
CEMENT BOARD MANUFACTURE



ABOUT SAINT-GOBAIN



Commitment:
carbon neutrality
in 2050



One of the top 100
global innovators
over the last 10 years



World or European
leader in most of our
businesses

Founded

357

years ago

Located in

75

countries

2023

€51.2BN

sales turnover

More than

168,000

employees

Approximately

800

manufacturing facilities
worldwide

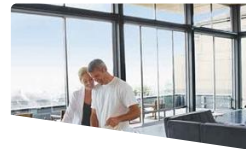
Around

3,500

sales outlets

ABOUT SAINT-GOBAIN

▼ Facade



High performance
façade coated
glass & mirrors

▼ Facade



Fibre cement
board, calcium
silicate board,
wood-like textures

▼ Insulation



Glasswool
insulation &
prefabricated
insulated ductwork
(PID)

▼ Interior



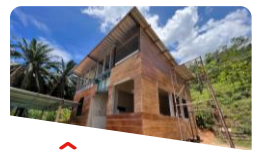
Gypsum
plasterboard for
drywall and ceiling,
metals, gypsum
plasters

▼ Finishing



Renders, screeds,
skimcoats, tile
adhesives, concrete
repair, waterproofing,
epoxy (Best Crete)

▼ Solutions



Plasterboard,
ceilings, fibre
cement board,
calcium silicate,
mortars, adhesive,
industrial flooring,
waterproofing,
sealing & bonding,
insulation

GLOBAL BUSINESS

HIGH PERFORMANCE
SOLUTIONS

Construction



Mobility



Industry




PRIMA

SAINT-GOBAIN PRIMA (FACTORY)

Location : Kanthan Industrial Estate, Chemor, Ipoh, Perak
Land Size : Approx. 70 Acres
Workforce : Approx. 254 people



**STRATEGIC MANUFACTURING LOCATION IN CENTRAL & NORTHERN
NEAR TO SOURCE OF RAW MATERIAL & MAIN DISTRIBUTION CENTER**



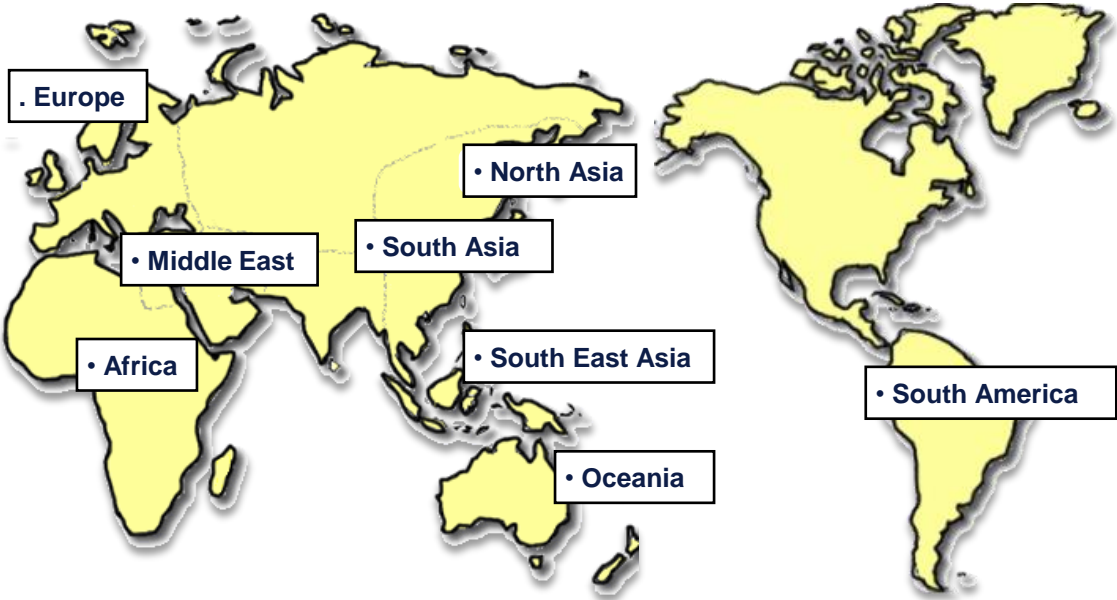
PRIMA

PLANTS ACCREDITED WITH ISO CERTIFICATION

ISO9001:2015, ISO14001:2015, ISO37001, ISO8336:2009, MS1296:2010

INTERNATIONAL MARKET PRESENCE






WE EXPORT TO OVER IN MANY COUNTRIES WORLD WIDE



Oceania	North Asia	South East Asia	Middle East	South Asia	Europe	Africa	South America
<ul style="list-style-type: none">• Australia• New Zealand• Pacific Islands	<ul style="list-style-type: none">• Taiwan• South Korea• Hong Kong• China• Japan• Russia	<ul style="list-style-type: none">• Malaysia• Brunei• Philippines• Singapore• Vietnam• Indonesia• Thailand• Cambodia• Myanmar	<ul style="list-style-type: none">• United Arab Emirates• Saudi Arabia• Bahrain• Jeddah• Kuwait• Yemen• Oman• Qatar• Iran	<ul style="list-style-type: none">• Sri Lanka• Maldives• India	<ul style="list-style-type: none">• United Kingdom• Netherland• Turkey• Cyprus• France	<ul style="list-style-type: none">• South Africa	<ul style="list-style-type: none">• Chile



PRODUCT CERTIFICATION - MALAYSIA

Certification	Logo	Remarks
IKRAM & CIDB PPS Accredited		Local Manufacturer & Quality Assurance
SIRIM Product Listing		Local Manufacturer & Quality Assurance
BOMBA Class 'O' (UBBL Malaysia)		Fire Resistance and Compliance to UBBL's Requirement
Malaysian Standard - MS1296		Product Standard & Quality Assurance
SIRIM Eco-Label		Green & Sustainable Building Material GBI Contribution

OUR PRODUCT MEETS GLOBAL INDUSTRY STANDARDS



PRIMA

* All product certificates can be download from PRIMA website : www.primafibreceement.com

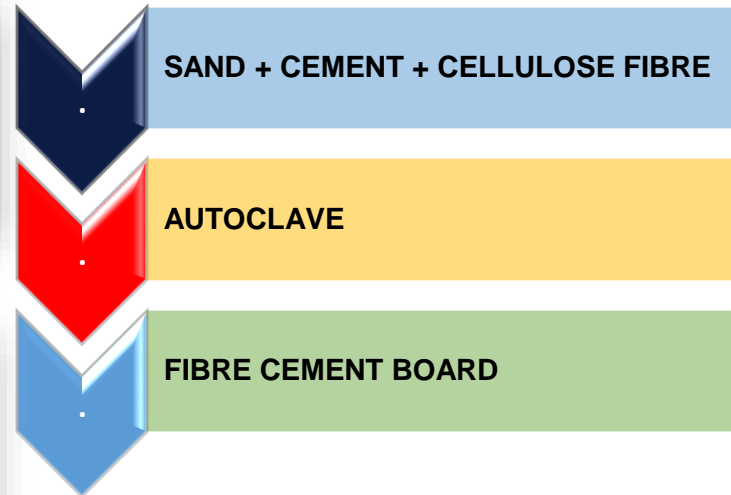
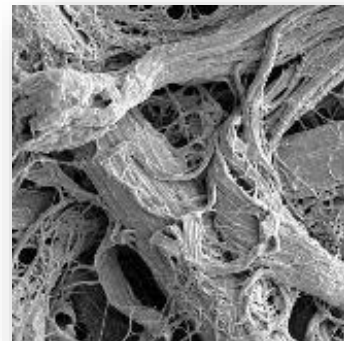
WHAT IS CELLULOSE FIBRE CEMENT?



+



+



- *Anti Mold*
- *Water Resistant*
- *Non-combustible material – UBBL Class 0*
- *High density - 1,390 kg/m³*
- *Thermal conductivity - K Value at 0.30 W/mK*
- *Thermal Insulation - R value at 0.03 m² K/W (6.0mm)*
- *Flexural Strength – 14 Mpa (dry), 8 Mpa (wet)*

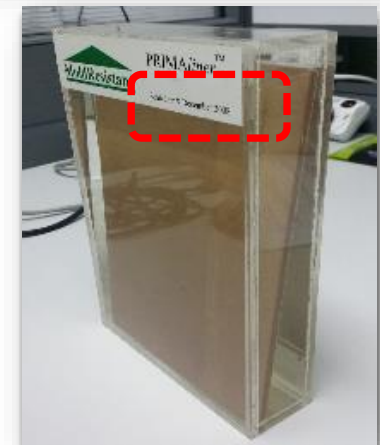


Photo taken in October 2014

PRIMA*plank*[™]
THE IDEAL WOOD
SUBSTITUTE

PRIMA*flex*[™]
MULTI PURPOSE BOARD

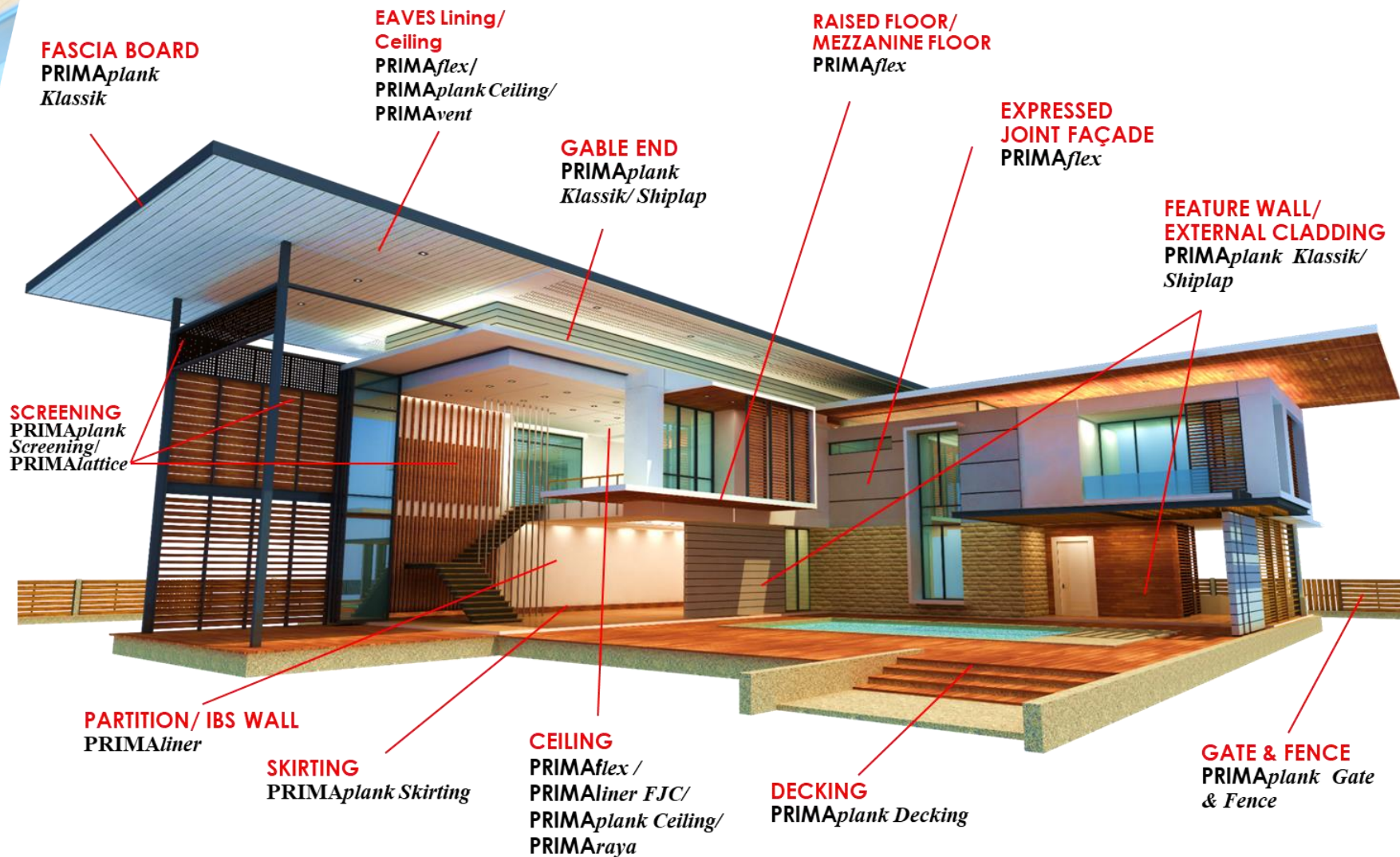
PRIMA*liner*[™]
SMOOTH LINING BOARD

FIBRE CEMENT PRODUCT LINE UP

PRIMA*lattice*[™]
Decorative Flat Sheet
Screening

PRIMA*vent*[™]
COOLER INTERIOR

PRIMA





**Superior Paint
Adhesion**



**Environmentally
Friendly**



**Termite
Resistant**



Fire Resistant



**50 Years
Durability**

PRIMATM
FIBRE CEMENT BUILDING SOLUTIONS



**Weather
Resistant**



**Aesthetically
Pleasing**



**High
Workability**



Water Resistant

PRIMA



PRIMA*flex*TM

Profile

- Strong multipurpose flat board
- Wide range thickness for multiuse application
- Smooth & flat surface
- Square edges on all sides
- Grey colour appearance (Cement) – paintable surface
- Recommended Jointing:
 - Butt Joint
 - Expressed Joint
 - Sealant Joint
 - Timber Beading Joint

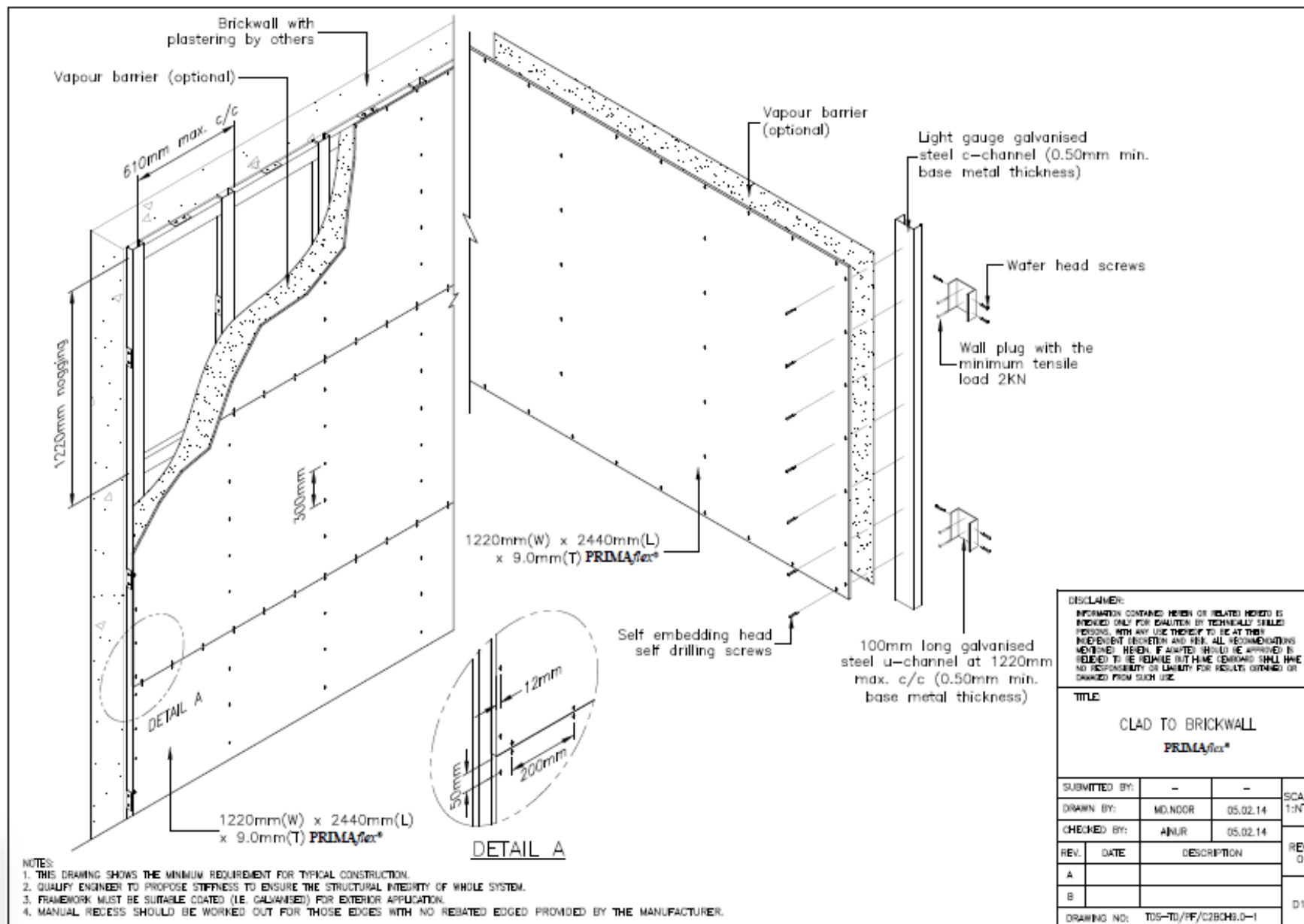


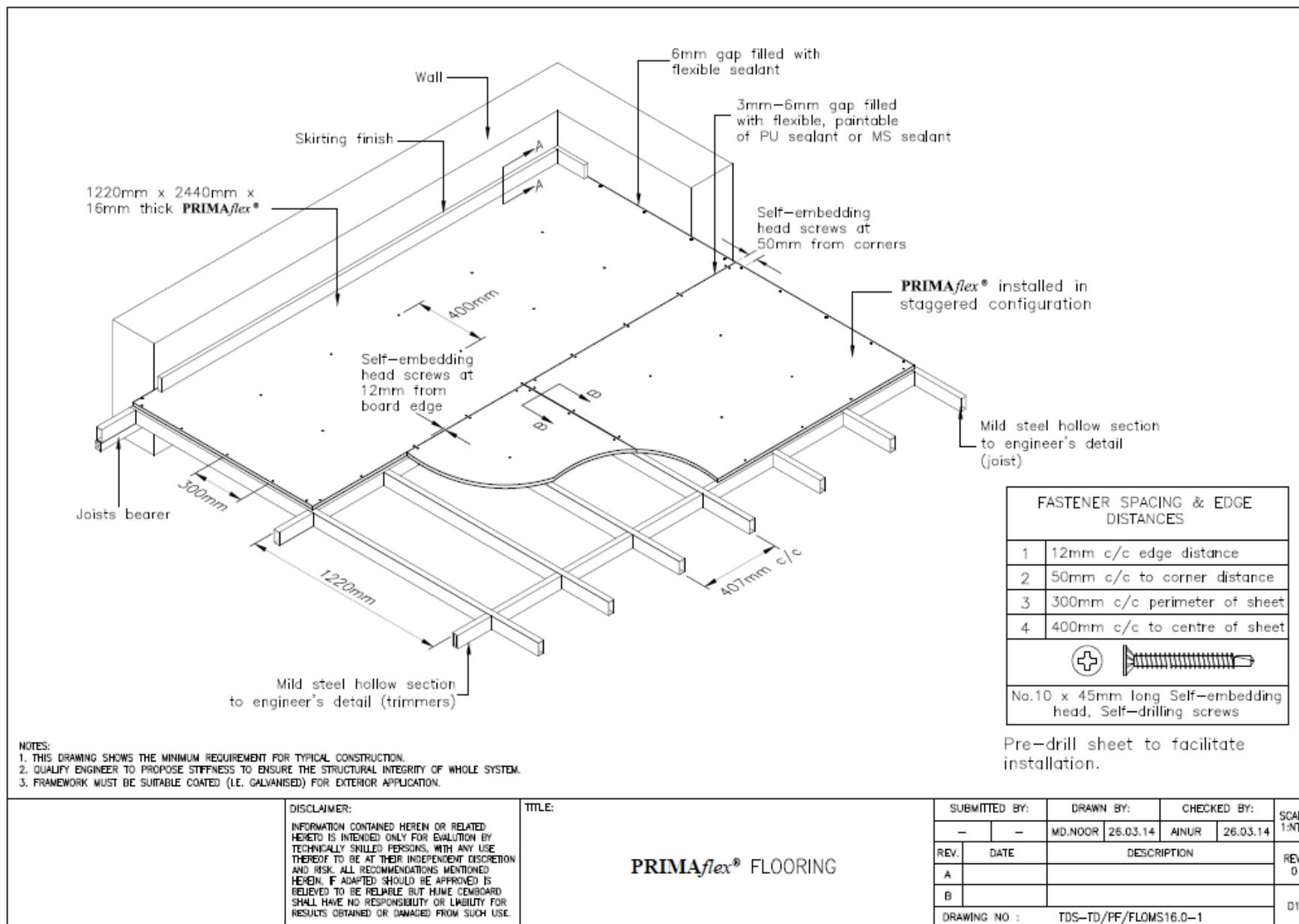
PRIMA



Properties	Values
Product Composition	<ul style="list-style-type: none"> • Top Grade Cellulose Fibre • Finely Ground Sand • Portland Cement • Water
Nominal Density	EMC=1390kg/m ³
Moisture Content	EMC=7%
Moisture Content at Saturation	33%
Minimum Bending Strength, MoR	Dry=16MPa; Wet=10MPa
Fire Rating	Class O (BS 476.6 & BS 476.7)
Fungus Resistance	Passes (ASTM G 21)
Termite Resistance	Resistance to Damage (Field evaluation conducted by CSIRO)
Frost Resistance	Passed (AS/NZS 2908.2, MS 1296)
Surface Coating	Pre-Primed available

Product sizes and Mass per sheet (kg), based on nominal density										
Width (mm)	Length (mm)	Thickness (mm)								
		3.2	3.5	4.5	6	7.5	9	12	16	20 (laminated)
450	2400			6.76						
600	2400	6.41	7.01	9.01	12.01					
	2700	7.21	7.88	10.13	13.51					
	3000	8.01	8.76	11.26	15.01					
603	603	1.62	1.77	2.27						
	1213	3.25	3.56	4.58						
610	1220	3.31	3.62	4.65	6.21					
1220	1220	6.62	7.24	9.31	12.41					
	2440		14.48	18.62	24.83	31.03	37.24	49.65	66.20	82.76
1200	2400				24.02	30.02		48.04	64.05	





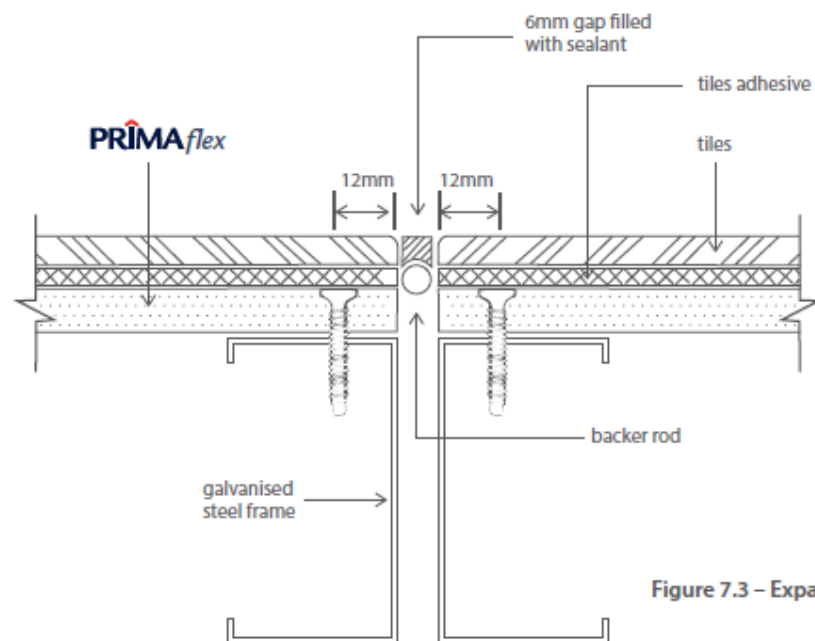
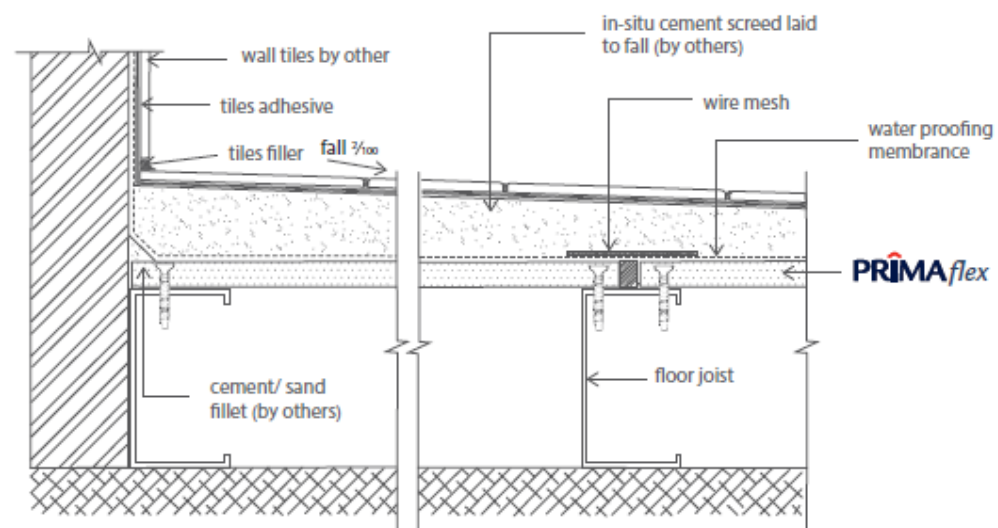


Figure 7.3 – Expansion Joint (Tiled Floor)

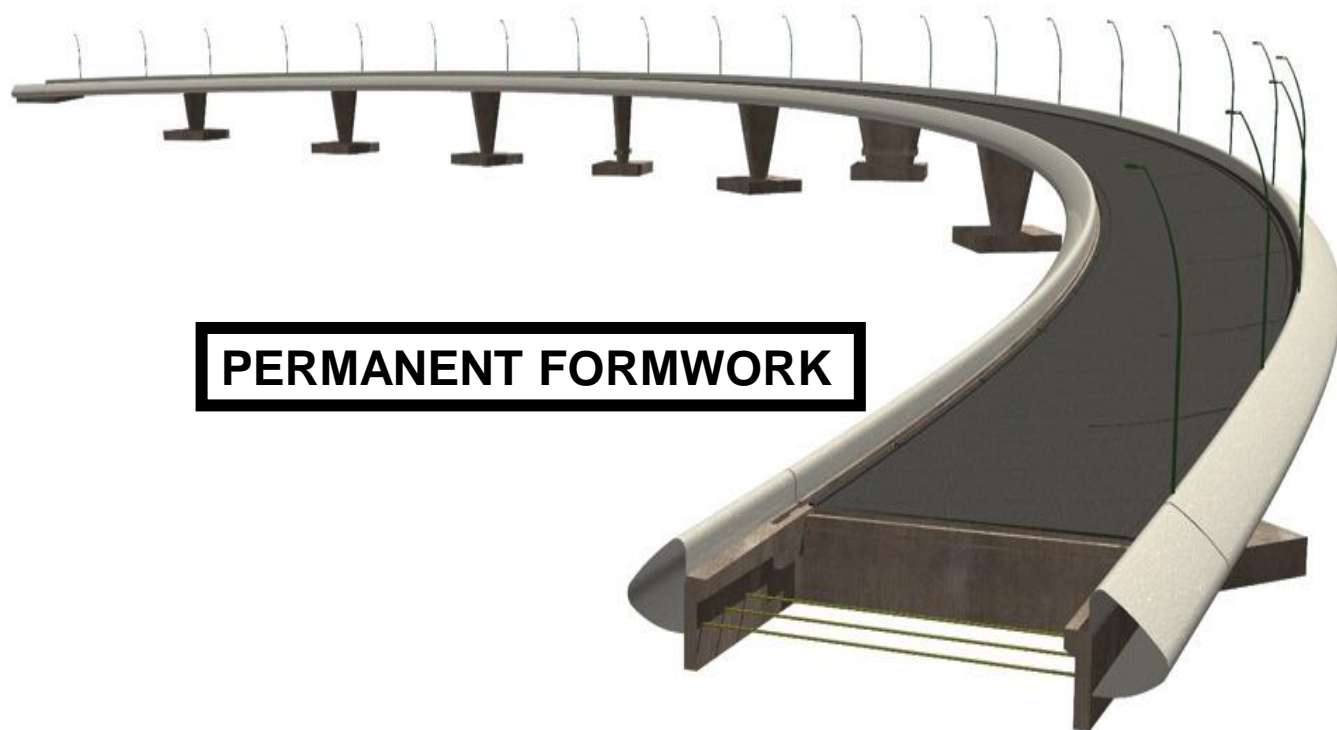


Wet Area Waterproofing

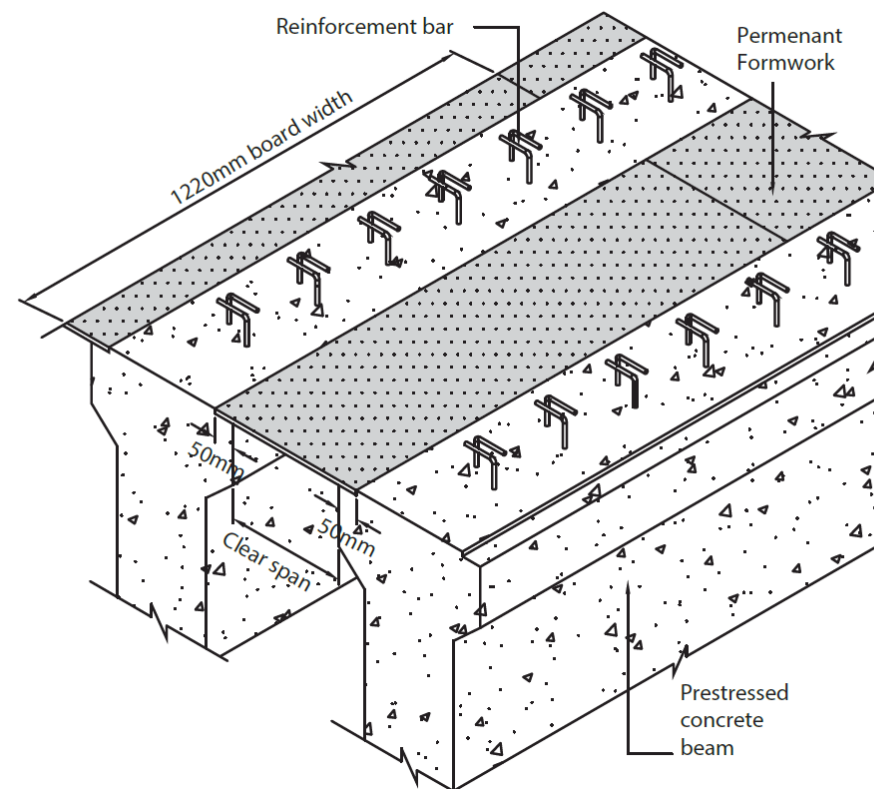


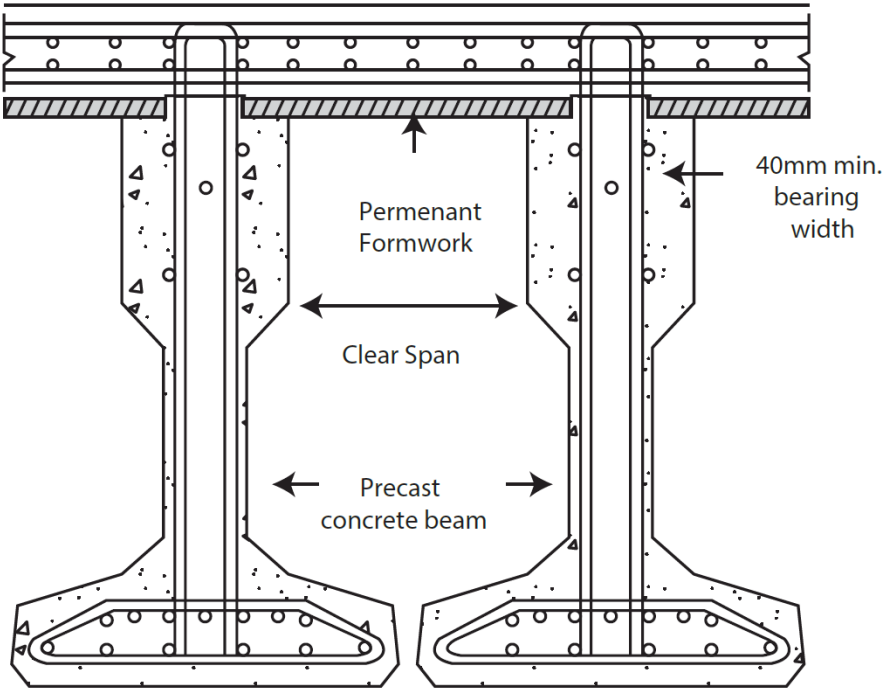
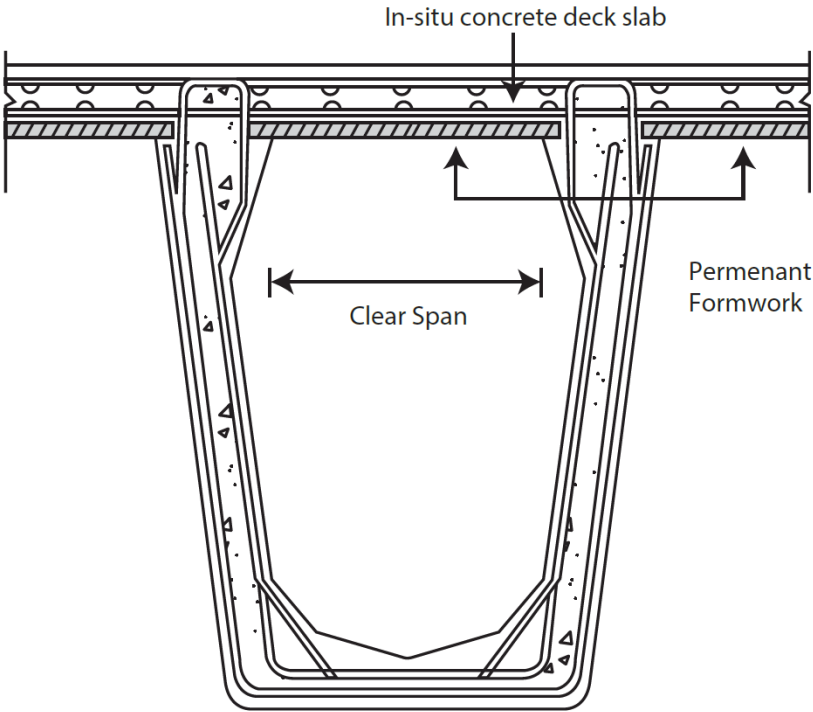






PERMANENT FORMWORK





Board thickness (mm)	Recommended maximum clear span (mm)														
	300	350	400	450	500	550	600	650	700	750	800	850	900	950	1000
Concrete thickness (mm)															
12mm	650	470	350	275	220	180	150	120	100	80	-	-	-	-	-
16mm	1150	850	650	500	410	320	280	230	200	170	150	140	120	110	100
18mm	1500	1045	798	608	475	399	342	285	238	209	190	171	152	133	114
20mm	1875	1235	950	760	589	485	418	352	304	257	228	200	185	162	147





PRIMA^{plank}™

Profile

- Beautiful 'wood' surface texture: Smooth, Woodgrain & Timbergrain
- Water & Weather resistant
- Non combustable
- Highly resistant to decay, termite, rodent attack & most chemical
- Superior Paint Adhesion



PRIMA



The Ideal Wood Substitutes



Painted **PRIMA**plank
cellulose fibre boards look just
like natural wood



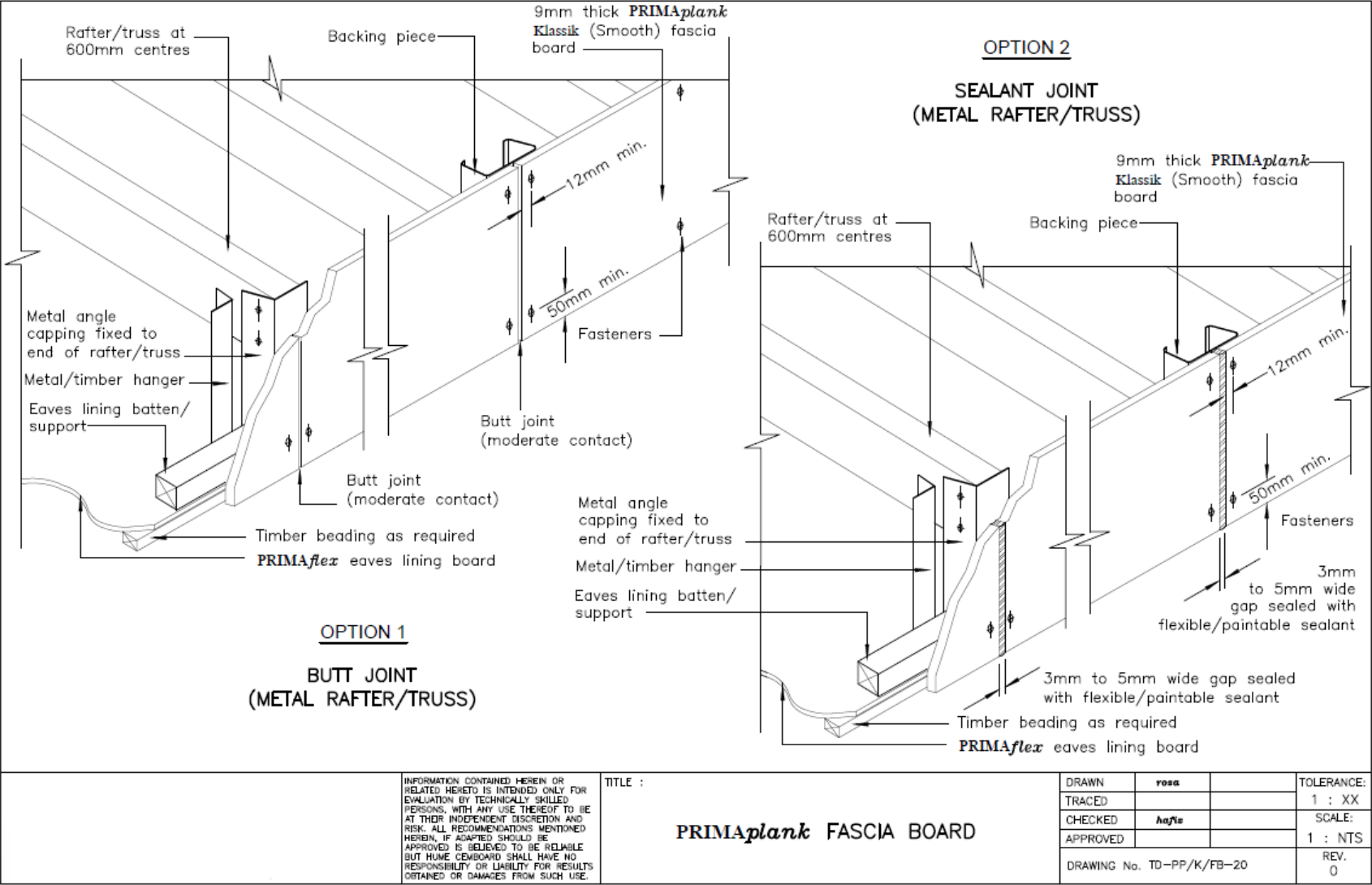
Wall Cladding, Gable End Cladding & Fascia Board Applications

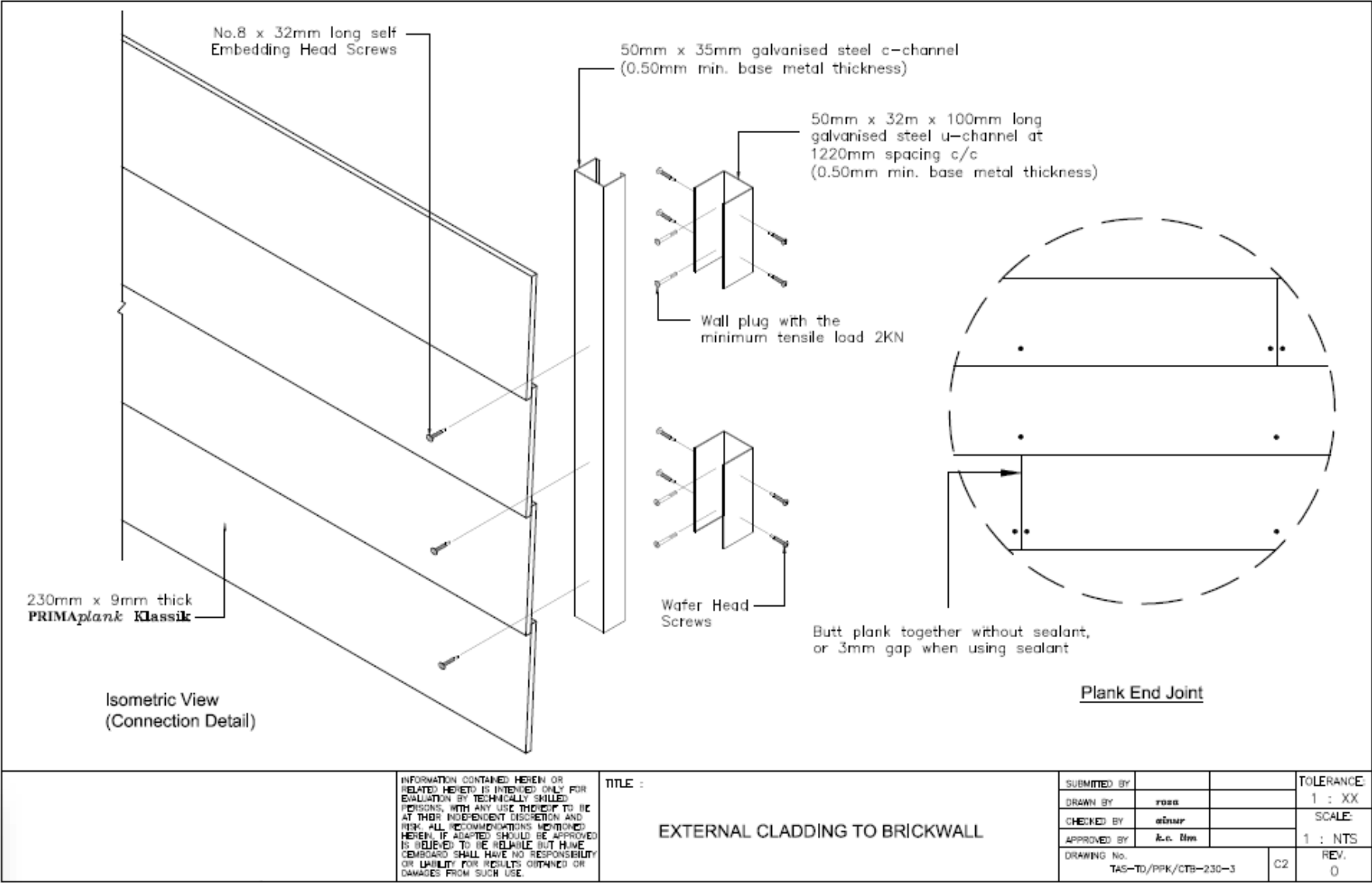
PRIMAplank Klassik

Highly durable fibre cement planks specifically formulated to produce the “Natural Timber Look” for myriad of designs in residential and commercial buildings. Available in “Woodgrain”, and “Smooth” surface textures. PRIMAplank Klassik performs better in applications where timber products are normally specified.

Surface Texture	Edge Detail	Sheet Sizes (mm)		Thickness (mm)		
		Width	Length	7.5	9.0	12.0
 Smooth	Square Edge	230	3660	•	•	•
			4200	•	•	•
 Woodgrain	Square Edge	230	3660	•	•	
			4200	•		







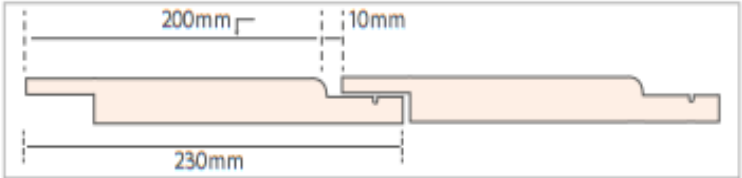


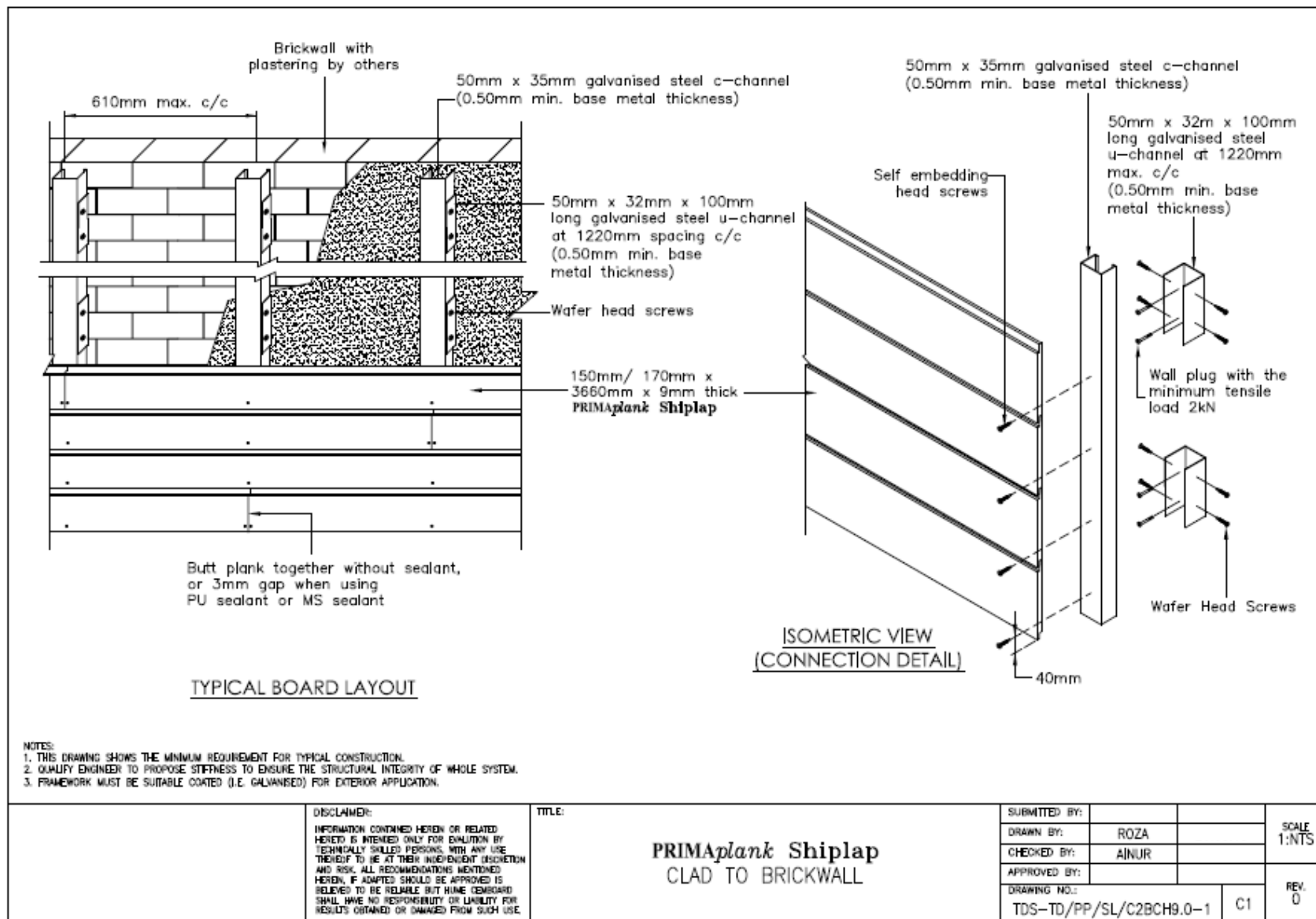


PRIMAplank Shiplap

Enhancing the uniqueness of wall facets on buildings by expressing the 'contemporary look' in the architect's masterpiece. The '*shiplap*' jointing system employs '*tongue and groove*' concept that brings about the conventional timber planking appearance, while maintaining a flat and straight wall. This jointing system is made possible by precision-finishing machine forming recesses along the plank's lengths. PRIMAplank Shiplap can be applied as cladding material to masonry walls or to lightweight framed-wall systems.

Surface Texture	Edge Detail	Sheet Sizes (mm)		Thickness (mm)
		Width	Length	
 Smooth	Lap Edge	230	3660	9.0
 Woodgrain	Lap Edge	230	3660	9.0







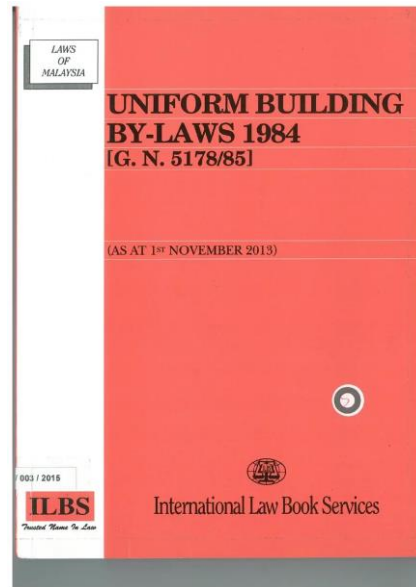


WALL CLADDING

PRIMAflex

PRIMAplank Klassik

PRIMAplank Shiplap



204. Classification of restriction of flame over surfaces of walls and ceilings.

For the purpose of this Part and the Eighth Schedule to these By-Laws any reference to a surface being of a specified class shall be construed as a requirement that the material of which the wall, ceiling or soffit is constructed, shall comply with the following requirements:

Class O. Surface of no flame spread.

(A) Any reference to a surface being Class O shall be construed as a requirement that—

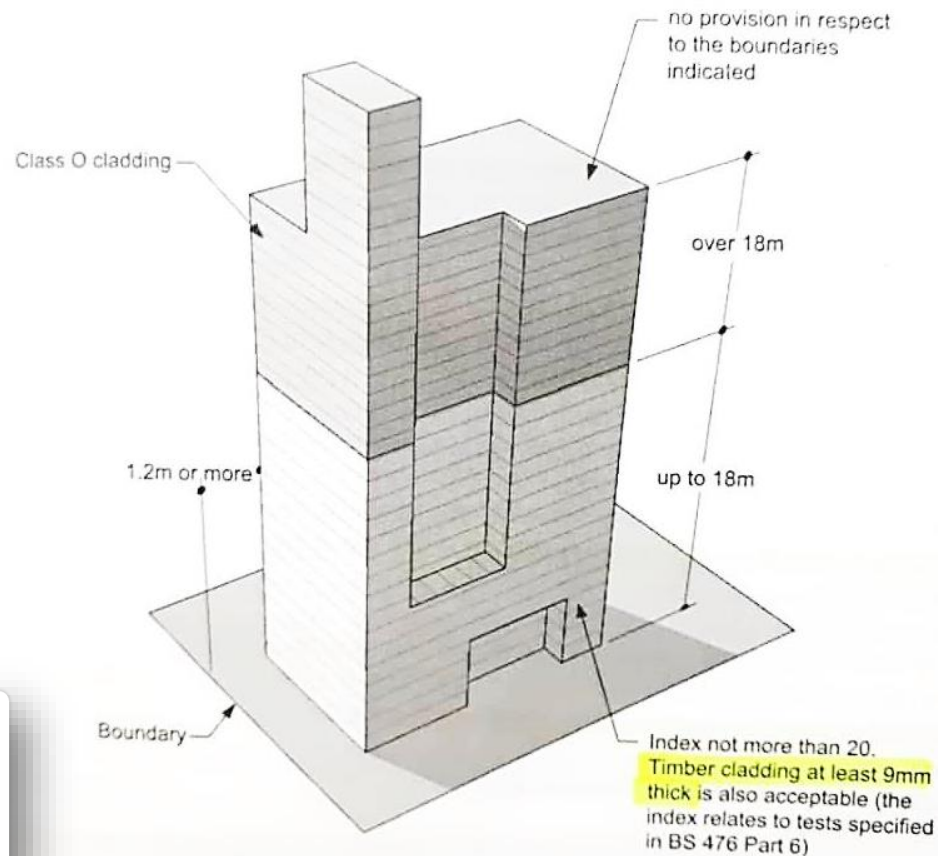
- (a) the material of which the wall or ceiling is constructed shall be non combustible throughout; or
- (b) the surface material, or if it is bonded throughout to a substrate, the surface material in conjunction with the substrate, shall when tested in accordance with BS 476; Part 6, 1968, have an index of performance (A) not exceeding 12 and a subindex (i) not exceeding 6:

PRIMA

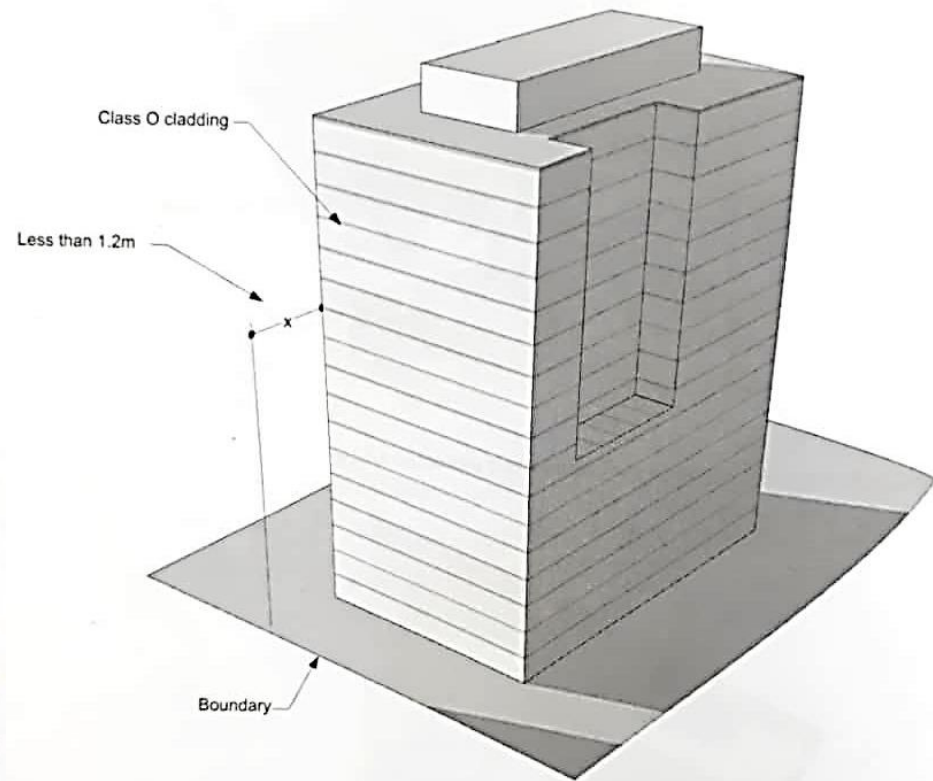


UBBL 1984 By-law 144 :

- (1) Any cladding on any external walls, if such building is situated **less than 1.2m** from any point on the **relevant boundary**, shall have a surface complying with the requirements for **Class O** specified in by-law 204.
- (2) Any ext. wall cladding is **1.2m or more** from the **relevant boundary** & the building is more than **18 meters in height**; surface to comply **Class O** specified in by-law 204...



Class O cladding on external wall < 1.2m from boundary



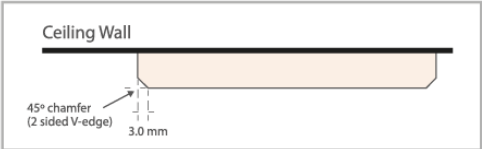


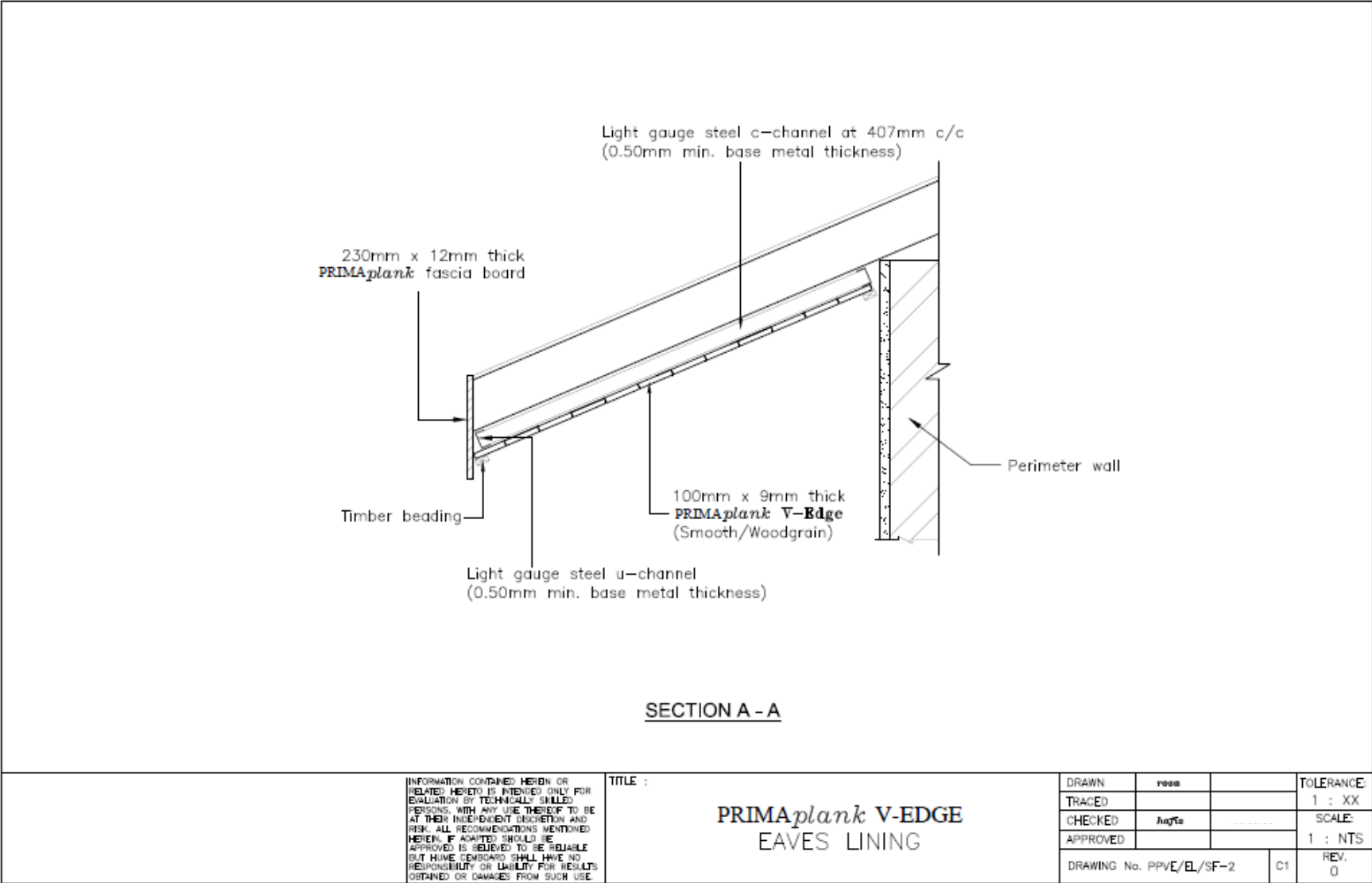
Ceiling and Skirting Applications

PRIMAplank Ceiling

Available in two surface textures; “Smooth” and “Woodgrain”. PRIMAplank Ceiling adds a stylish touch to the modern tropical architectural structures; it gives you the warmth and beauty of natural timber looking ceilings without the expense and environmental concerns of using traditional forest timbers.

Surface Texture	Edge Detail	Sheet Sizes (mm)		Thickness (mm)
		Width	Length	9.0
 Smooth	2-Sided V-Edge	100	3660	▲
 Woodgrain	2-Sided V-Edge	100	3660	▲





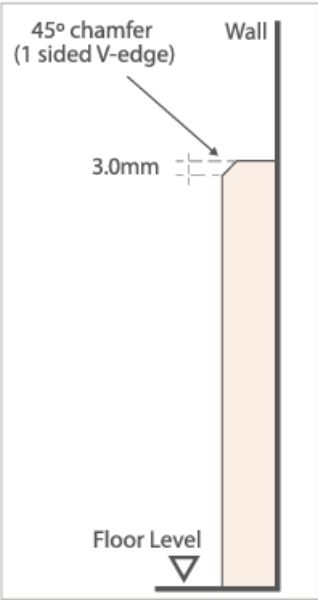


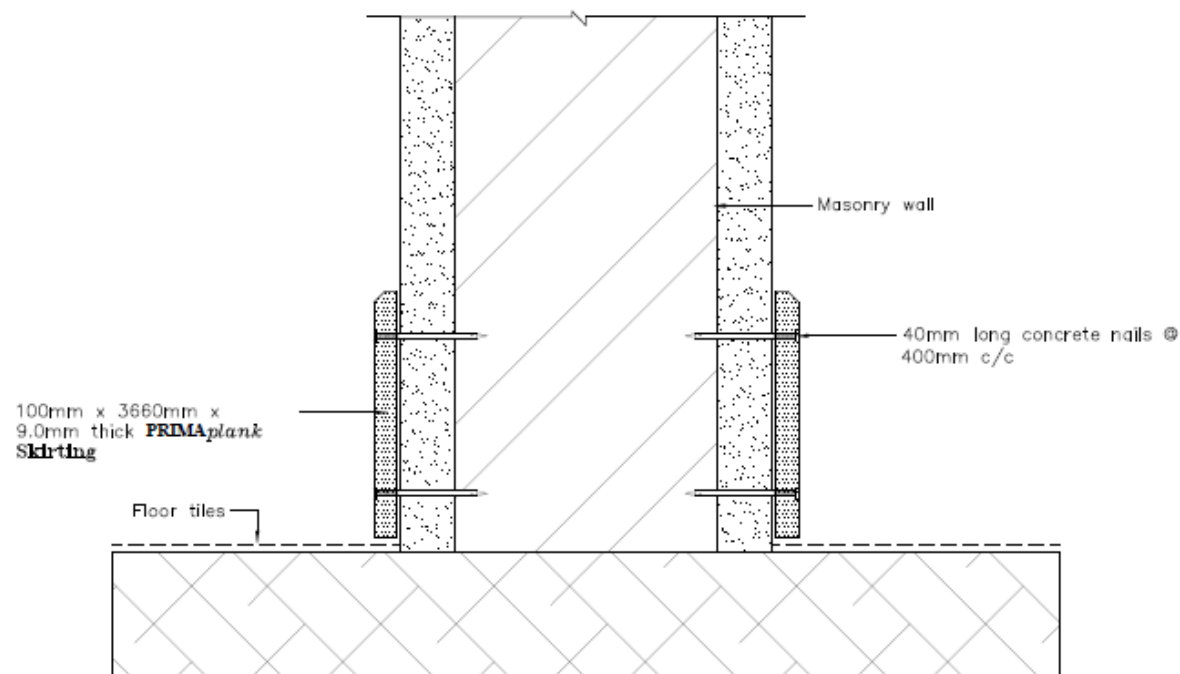


PRIMAplank Skirting

Decorate the wall-to-floor intersections with PRIMAplank Skirting. In areas where floors are prone to intermitted wetting, PRIMAplank Skirting serves as a better solution compared with natural timber product.

Surface Texture	Edge Detail	Sheet Sizes (mm)		Thickness (mm)
		Width	Length	9.0
<div>Smooth</div>	1-Sided V-Edge	100	3660	▲
<div>Woodgrain</div>	1-Sided V-Edge	100	3660	▲





TYPICAL DRAWING

- NOTES:**
1. THIS DRAWING SHOWS THE MINIMUM REQUIREMENT FOR TYPICAL CONSTRUCTION.
 2. QUALIFY ENGINEER TO PROPOSE STIFFNESS TO ENSURE THE STRUCTURAL INTEGRITY OF WHOLE SYSTEM.
 3. FRAMEWORK MUST BE SUITABLE COATED (I.E. GALVANIZED) FOR EXTERIOR APPLICATION.

DISCLAIMER:
 INFORMATION CONTAINED HEREIN OR RELATED
 HEREIN IS INTENDED ONLY FOR EVALUATION BY
 EXTERNALLY QUALIFIED PERSONS, WITH ANY USE
 THEREOF TO BE AT THEIR INDIVIDUAL DISCRETION
 AND RISK. ALL RECOMMENDATIONS MENTIONED
 HEREIN, IF ADAPTED, SHOULD BE APPROVED BY
 USER. TO THE MAXIMUM EXTENT PERMITTED BY
 LAW, SAINT-GOBAIN SHALL HAVE NO RESPONSIBILITY OR LIABILITY FOR
 RESULTS OBTAINED OR DAMAGED FROM SUCH USE.

TITLE:
 PRIMA^{plank} SKIRTING

SUBMITTED BY:		SCALE
DRAWN BY:	ROZA	1:NTS
CHECKED BY:	AINUR	
APPROVED BY:		
DRAWING NO.:	TDS-TD/PP/100SKTG9.0-1	REV. 0
	C1	







Gate, Fencing & Decking Applications

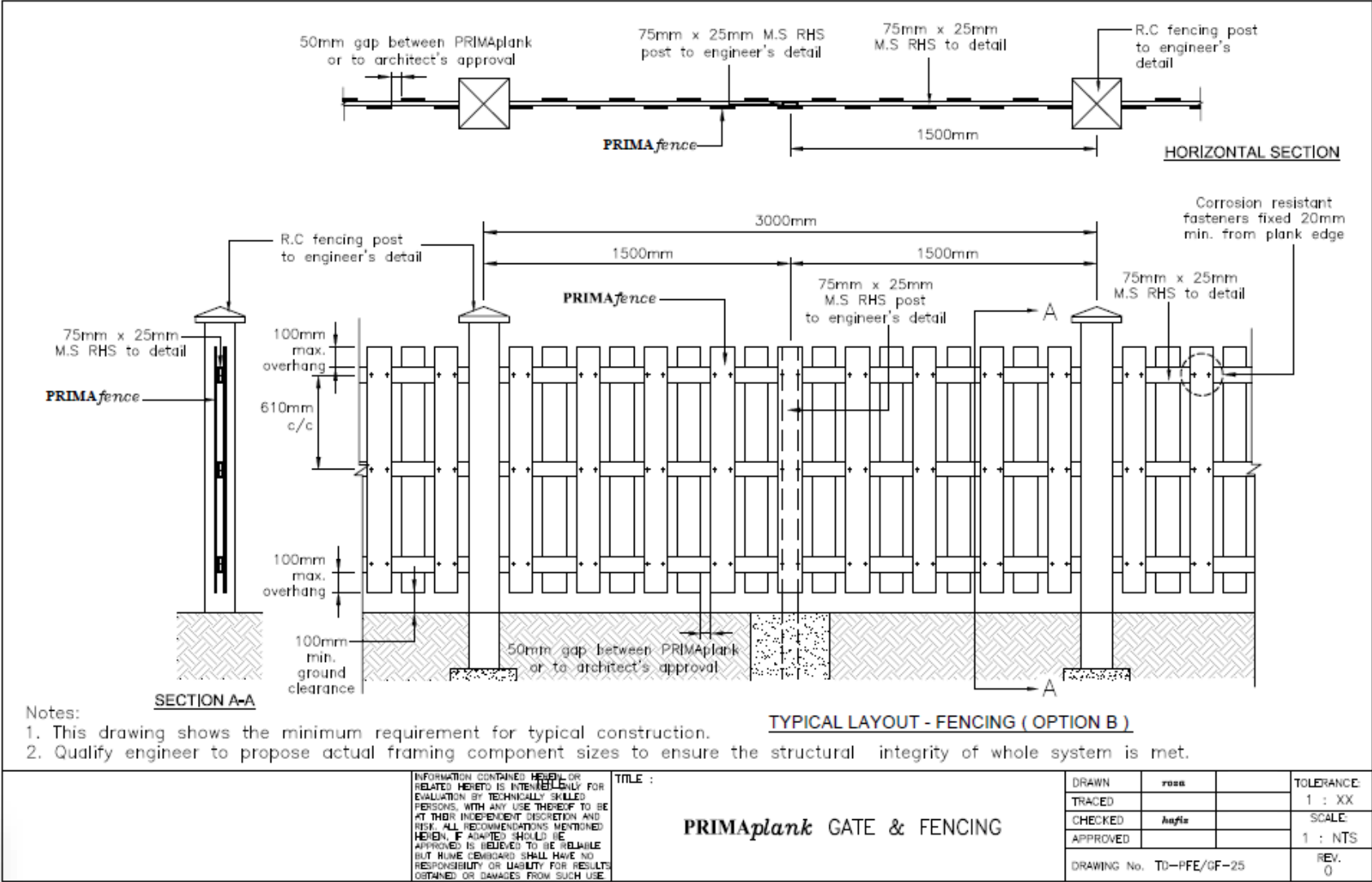
PRIMAplank Gate & Fencing

Available in two surface textures namely “Woodgrain” and “Smooth”. When highly durable decorative gate or fencing material has been specified, PRIMAplank Gate & Fencing material satisfies virtually all of the design pre-requisites. 3 profiles are available: Square, Round & Summit.

Profile	Surface Texture	Sheet Sizes (mm)		Thickness (mm)
		Width	Length	9.0
<div>Square</div>	<div>Smooth</div>	100	3660	▲
	<div>Woodgrain</div>	100	3660	▲

*Woodgrain pattern is textured onto one side of the surface only.






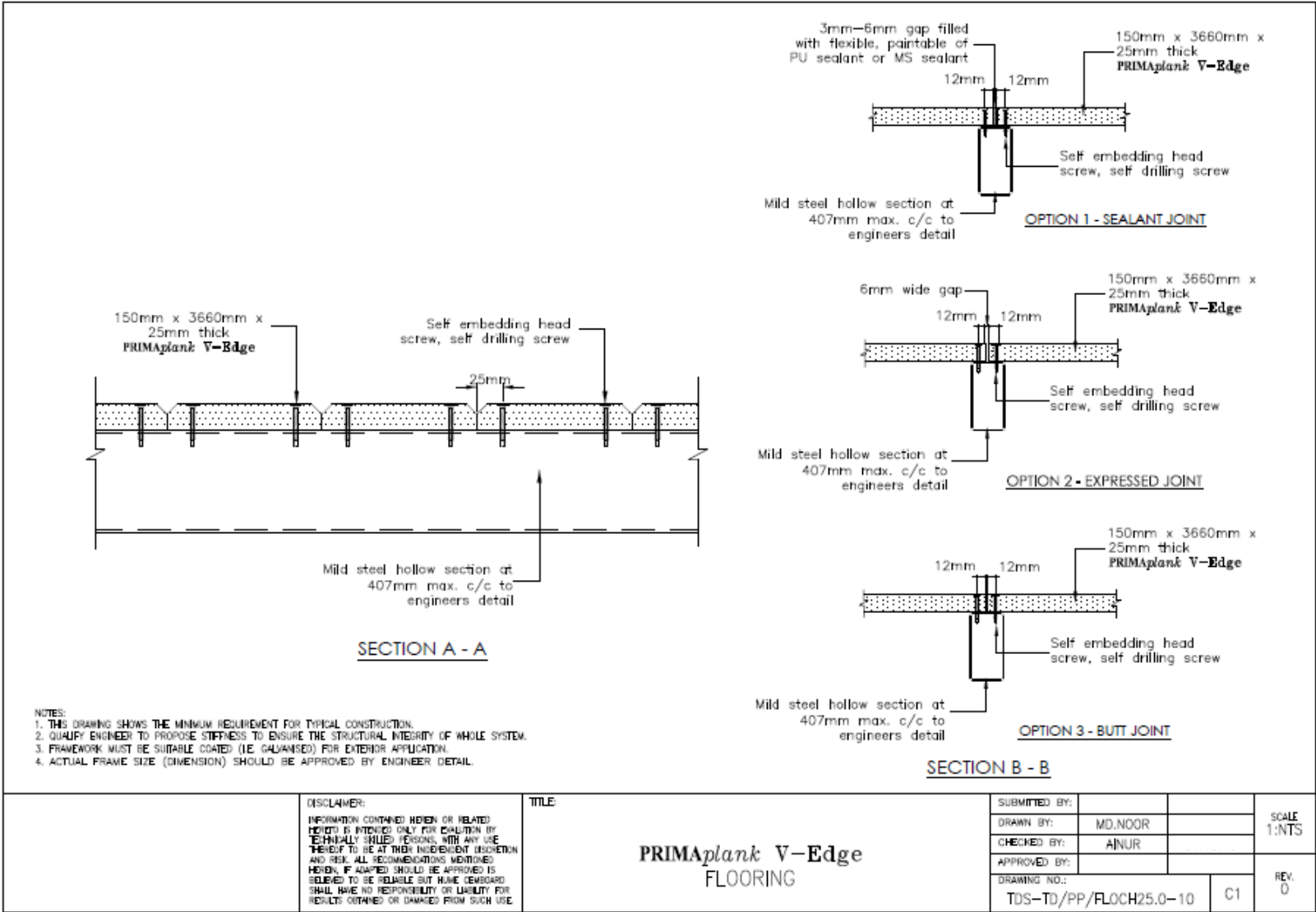


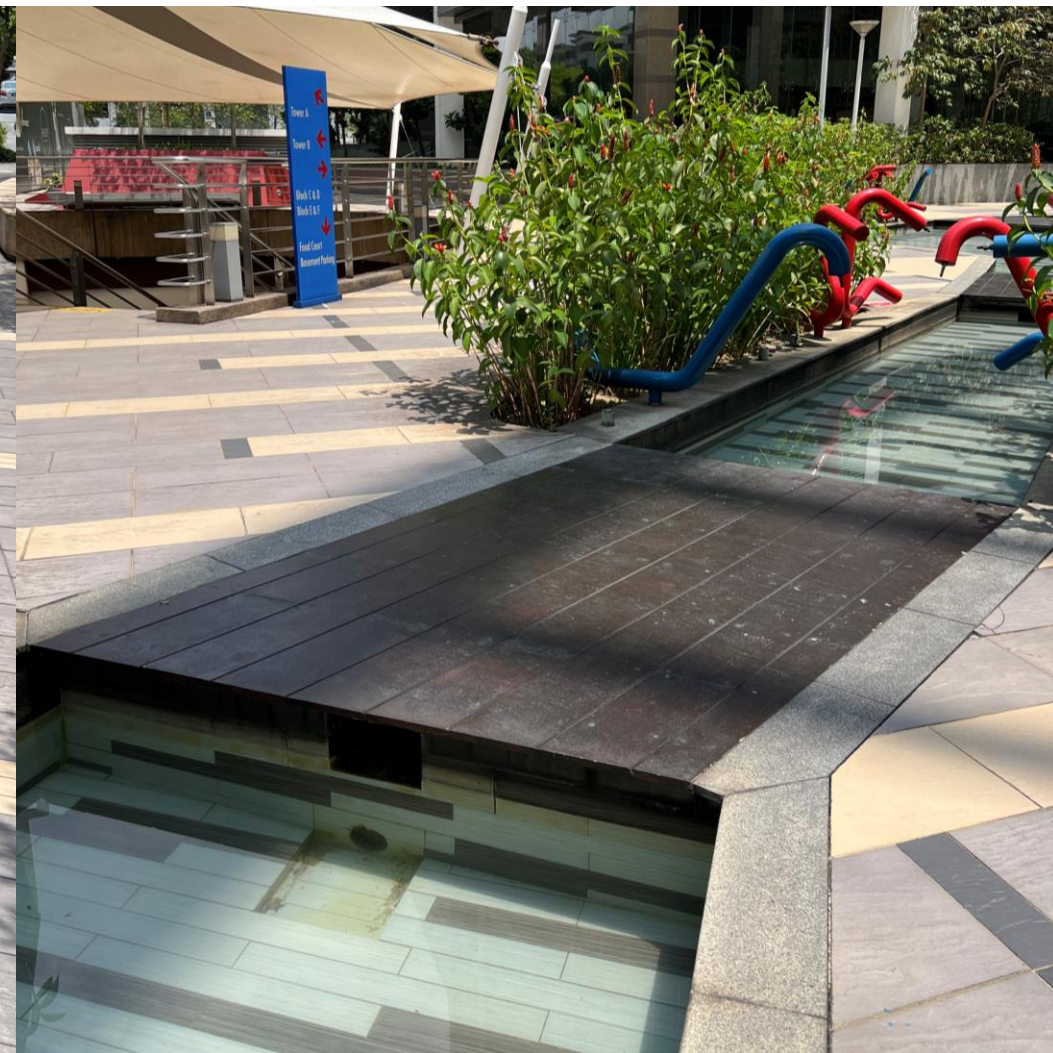


PRIMAplank Decking

Manufactured using a precision cutting technology, **PRIMAplank Decking** is ideal for decking, flooring & steps application. **PRIMAplank** strips are lightly chamfered along their length resulting in a neat inverted 'V' shape lines along the strip's joints. Ideal for pool decking and landscape walkways.

Surface Texture	Edge Detail	Sheet Sizes (mm)		Thickness (mm)
		Length	Width	16.0
 Timbergrain	2-Sided V-Edge	150	3660	▲







PRIMA*liner*TM

Profile

- Smooth lining board for drywalls, Solidwall & Seamless Ceiling.
- Durable & strong
- Water & Weather resistant
- Good acoustic performance
- Non-combustible for fire rated walls construction (Class 'o')
- Superior Paint Adhesion.
- Rebated edge feature for perfect flush works.
- Varies thickness for design flexibility & cost effective.
- 1220mm x 2440mm size



PRIMA

Features



PRIMA^{lin}er

Smooth Lining for Walls and Ceilings

Immune to Permanent Moisture Damage

Applications:

Internal Drywall (Wet Area System, Sound Rated System, Fire-Rated System)

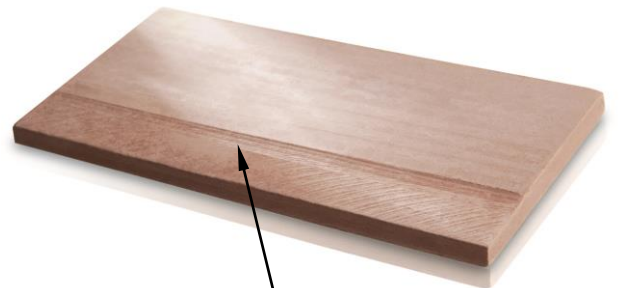
A premium quality fibre cement board with square rebated edges for flush jointed internal walls.

The continuous quest for better value for money and improvement are very common objectives. Now you have the comfort of knowing that the **PRIMA^{lin}er** you have chosen will provide the on-going high performance and durability requirements.

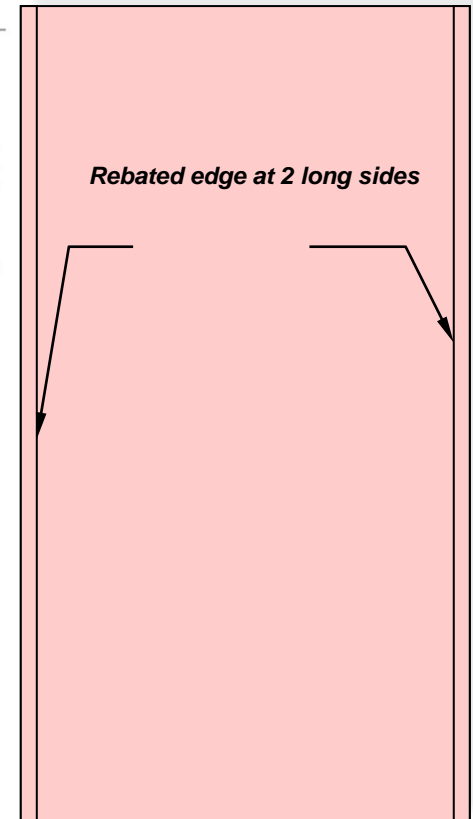
PRIMA^{lin}er is a high quality, high impact, fire resistant, fibre cement lining board ideal for walls in both domestic and commercial construction.

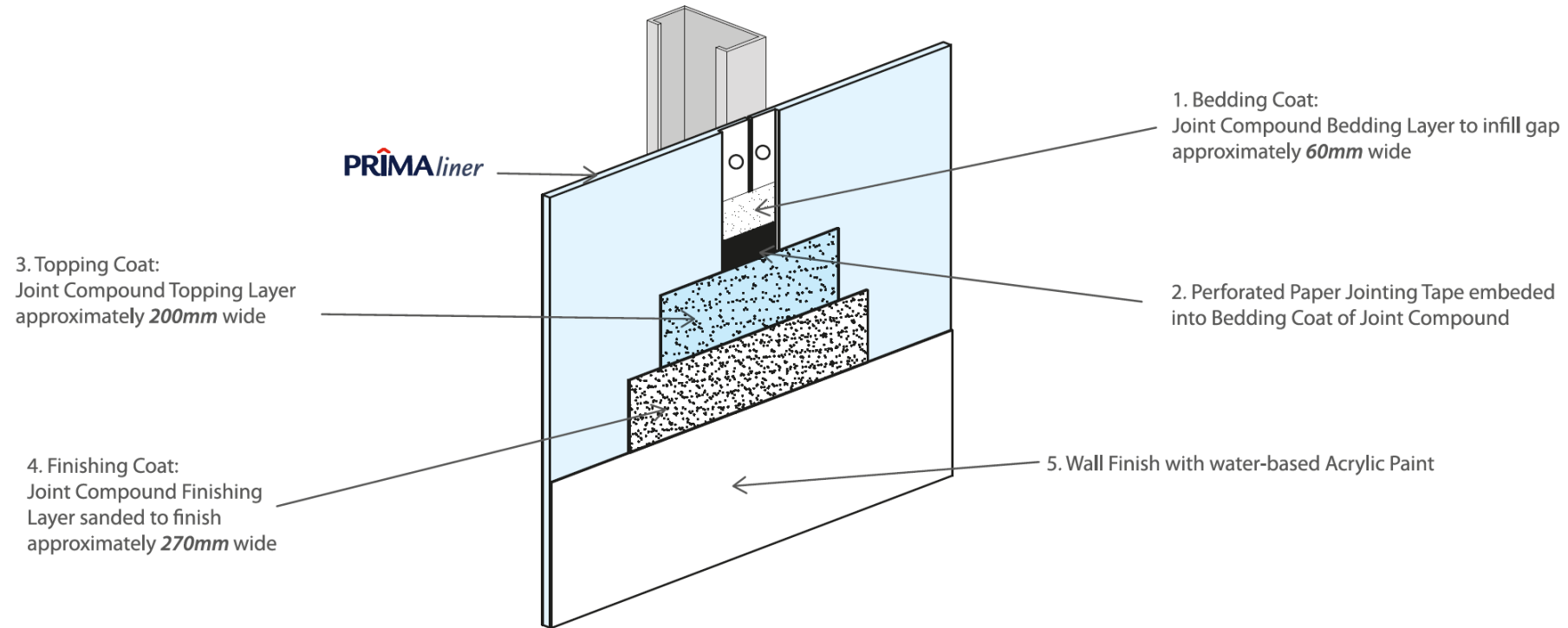
Product Benefits

- Immune to Permanent Moisture Damage
- High Impact Strength
- Termite Resistant
- Fire Resistant
- Climate-Friendly
- Good Sound Insulation



Rebated edge

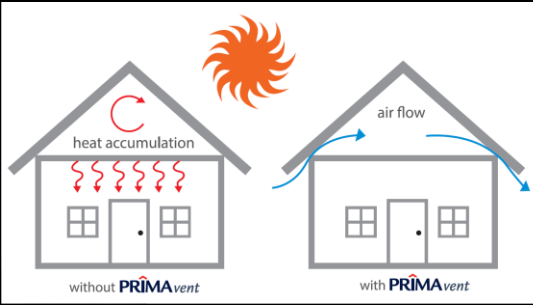




PRIMAvent™

Product Benefits

- Good Air Circulation for Roof
- Cooler interior
- Energy Saving
- Asbestos Free
- Fire, Rot, Water Resistance
- Cost Effective



PRIMA

Standard Sizes								
Dimensions (mm)	610 x 610		610 x 1220		915 x 1220		1220 x 1220	
Thickness (mm)	3.2	4.5	3.2	4.5	3.2	4.5	3.2	4.5
Approx. Weight per Sheet (kg)	1.6	2.4	3.2	4.7	4.8	7.1	6.4	9.3







PRIMA*lattice*[™]

Product Benefit

- Low maintenance
- Weather resistant
- Termite resistant
- Good workability

Profile		Length (mm)	Width (mm)	Thickness (mm)	Application
	Square	2400	1200	6.0	Decorative Screen
	Diamond	2400	1200	6.0	Decorative Screen

PRIMA



Sunway Iskandar International School, Johor Prima Lattice (2018)



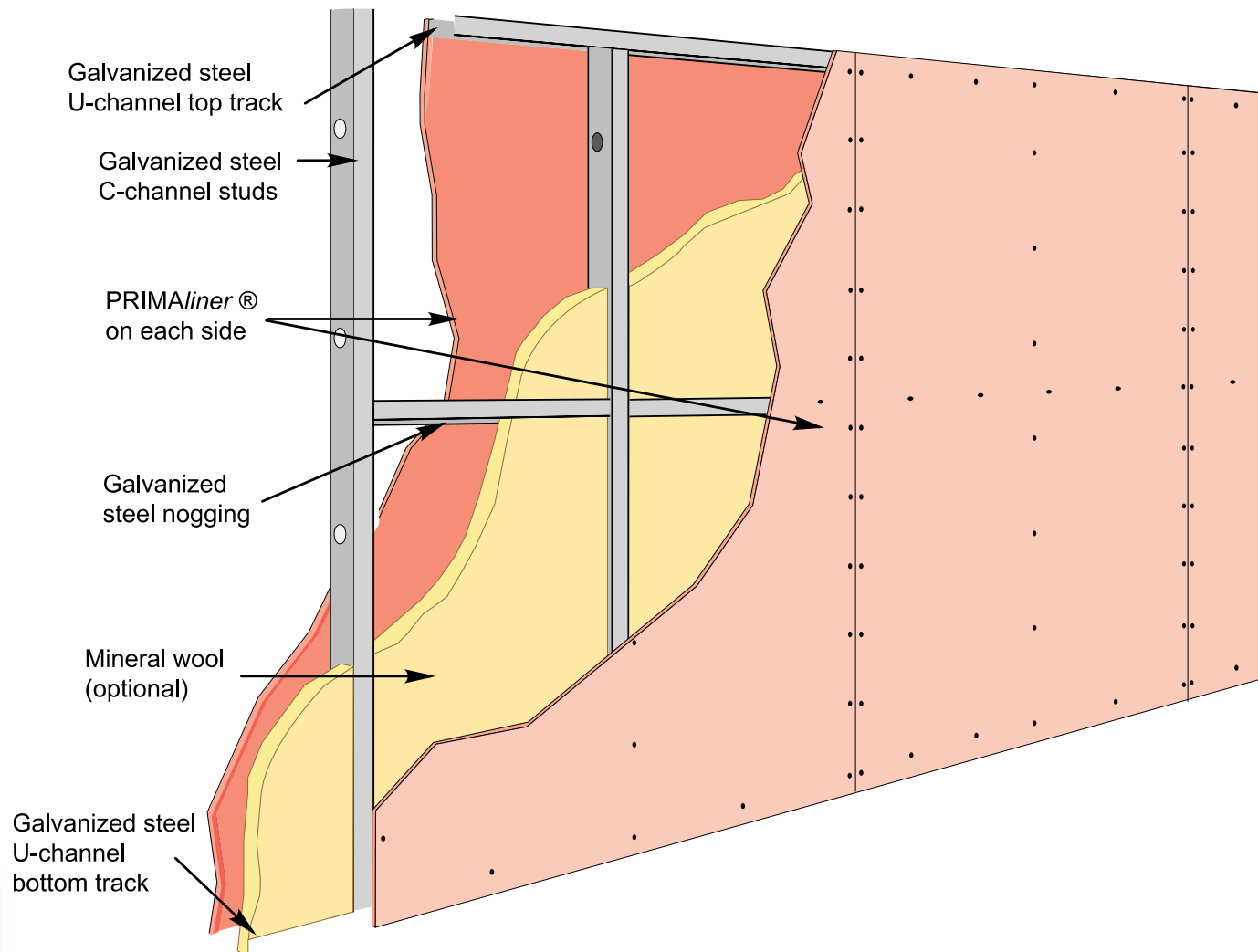
PRIMA*drywall*

Product Benefit

- Fire-Rated (BOMBA)
- Cost Effective & Space Efficient
- CONQUAS & QCLASSIC Standards
- Better Site Management, Low Wastage
Fast & Lightweight (IBS)
- Simple Construction Method
- Solid, Strong & Secured (BS 5234, Part 2)
- High STC & Thermal Resistant & No Stiffeners Required



PRIMA



System – The IBS compliance lightweight non-load bearing partition wall system.

The ideal replacement for brick wall.

Category:
 PRIMA Drywall - General
 PRIMA Drywall - Impact
 PRIMA Drywall - Acoustic
 PRIMA Drywall - Fire Rated



Paint



Tiles



Texture Coating



Wall Covering

Lightweight

System	Nominal Wall Thickness	Nominal Weight
	82mm	30 kg/m2
BRICK WALL	150mm	250 kg/m2

Weight is 1/8 of Brick Wall



IBS Certified

Industrialized Building System (IBS)

*“A construction technique in which components are manufactured in a controlled environment (on or off site), transported, positioned and assembled into a structure with minimal additional site works.”
(CIDB)*

IBS FACTOR = 1.0


IBS MANUFACTURER & PRODUCT ASSESSMENT & CERTIFICATION IMPACT

Adalah dengan ini disahkan bahawa :
It is hereby verified that :

No. Siri : 5523 (A)
Serial No.

HUME CEMBOARD INDUSTRIES SDN. BHD. (579898-W),
LOT 127220, KAWASAN PERINDUSTRIAN KANTHAN,
31200 CHEMOR, PERAK.

Merupakan :
Is :
PENGELUAR

Lokasi Kilang :
Factory Location :
LOT 127220, KAWASAN PERINDUSTRIAN KANTHAN,
31200 CHEMOR, PERAK.

Sebagai syarikat Status IBS yang mengeluarkan produk IBS berikut:
As an IBS status company that manufactures the following IBS components:

SISTEM BERINOVATIF:
- PRIMA DRYWALL

No. Laporan :
Report No. :
IPK080623IBS05523

Tarikh Dikeluarkan :
Issue Date :
15 JUN 2023

Kategori :
Category :
PENGELUAR

Sah Sehingga :
Valid Until :
30 MAC 2024

Standard Rujukan :
Reference Standard :
CIS 24 : 2018
- TECHNICAL OPINION

CIDB IBS SDN BHD
Lot 8, Jalan Chan Sow Lin
55200 Kuala Lumpur
Malaysia

TEL: 03-92816909
FAX: 03-92815870

Laman Web
www.ibscentre.com.my

Ir. Ts. ZURAIHI ABDUL GHANI
Ketua Pegawai Eksekutif

Pendaftaran ini hendaklah diperbaharui seawat-lewatnya 30 hari sebelum tarikh tamat tempoh.
This registration shall be renewed within 30 days before expiration date.


IBS MANUFACTURER & PRODUCT ASSESSMENT & CERTIFICATION IMPACT

Adalah dengan ini disahkan bahawa :
It is hereby verified that :

No. Siri : 5523 (B)
Serial No.

HUME CEMBOARD INDUSTRIES SDN. BHD. (579898-W),
LOT 127220, KAWASAN PERINDUSTRIAN KANTHAN,
31200 CHEMOR, PERAK.

Merupakan :
Is :
PENGELUAR

Lokasi Kilang :
Factory Location :
LOT 127220, KAWASAN PERINDUSTRIAN KANTHAN,
31200 CHEMOR, PERAK.

Sebagai syarikat Status IBS yang mengeluarkan produk IBS berikut:
As an IBS status company that manufactures the following IBS components:

SISTEM BERINOVATIF:
- PRIMA SOLIDWALL

No. Laporan :
Report No. :
IPK080623IBS05523

Tarikh Dikeluarkan :
Issue Date :
15 JUN 2023

Kategori :
Category :
PENGELUAR

Sah Sehingga :
Valid Until :
30 MAC 2024

Standard Rujukan :
Reference Standard :
CIS 24 : 2018
- TECHNICAL OPINION

CIDB IBS SDN BHD
Lot 8, Jalan Chan Sow Lin
55200 Kuala Lumpur
Malaysia

TEL: 03-92816909
FAX: 03-92815870

Laman Web
www.ibscentre.com.my

Ir. Ts. ZURAIHI ABDUL GHANI
Ketua Pegawai Eksekutif

Pendaftaran ini hendaklah diperbaharui seawat-lewatnya 30 hari sebelum tarikh tamat tempoh.
This registration shall be renewed within 30 days before expiration date.

BOMBA Certified (Class '0')

No. Fail: JBPM.IP.RNP: 700-7/2/7-257 (26)
(PEMBAHARUAN: KEDUA PULUH LIMA)

**SIJIL PEPASANGAN
KESELAMATAN KEBAKARAN**
APPROVAL CERTIFICATE

Jabatan Bomba dan Penyelamat Malaysia
dengan ini memperakukan
Fire and Rescue Department of Malaysia
hereby certify

BAHAN KELAS 'O' / CLASS 'O'
(MODEL: PRIMAliner, PRIMAflex, PRIMAraya,
PRIMAp plank WOODGRAIN & PRIMAp plank SMOOTH)

Berdasarkan Piawaian
Complying with

BS 476: PART 6: 1989 + A1: 2009 & BS 476: PART 7: 1997

Syarikat Berdaftar
Registered company

HUME CEMBOARD INDUSTRIES SDN BHD (579898-W)
Lot 127220, Kawasan Perusahaan Kanthaan
31200 Chemor
Perak Darul Ridzuan

Tempoh sah perakuan: 05/12/2023 hingga 05/12/2025

(KAMARULZAMAN MALIK ABDULLAH)
Perigarah
Bahagian Perancangan dan Penyelidikan
b.p. Ketua Pengarah
Jabatan Bomba dan Penyelamat Malaysia

Tarikh: 21 Disember 2023

**** Peringatan:**
Sila patuhi sepenuhnya syarat-syarat dan had kegunaan seperti dalam Lampiran A1

No. Fail: JBPM.IP.RNP: 700-7/2/7-257 (26)
No.Siri: BB/ACFCS/404/1998 (P25)

LAMPIRAN A1

Jenis Bahan Binaan : **BAHAN KELAS 'O' / CLASS 'O'**
▪ FIBRE-CEMENT FLAT SHEETS

Jenama & Spesifikasi : **JENAMA / BRAND : PRIMA**
MODEL : SEPERTIMANA BUTIRAN DIBAWAH-
1. PRIMAliner - THICKNESS : 4.5 mm - 12.0 mm
2. PRIMAflex - THICKNESS : 3.2 mm - 32.0 mm
3. PRIMAraya - THICKNESS : 3.2 mm
4. PRIMAp plank WOODGRAIN - THICKNESS : 7.5 mm
5. PRIMAp plank SMOOTH - THICKNESS : 7.5 mm - 25.0 mm

Tahap Rintangan Api : **KELAS 'O' / CLASS 'O'**
▪ FIRE PROPAGATION INDEX, (I) : 0.1 HINGGA 5.3
▪ SURFACE SPREAD FLAME TEST : CLASS 1

Nama & Alamat Pengeluar : **HUME CEMBOARD INDUSTRIES SDN BHD (579898-W)**

No. Laporan Ujian / Tarikh : **PRIMAflex**
SIRIM 2012FE0147, SIRIM 2012FE0148, SIRIM 2012FE0155,
SIRIM 2012FE0156, SIRIM 2013FE0101, SIRIM 2013FE0102,
SIRIM 2013FE0103, SIRIM 2013FE0104, SIRIM 2013FE0464,
SIRIM 2013FE0465, SIRIM 2017FE0011, SIRIM 2017FE0012,
SIRIM 2017FE0015, SIRIM 2017FE0016, SIRIM 2017FE0087,
SIRIM 2017FE0088, SIRIM 2017FE0091 & SIRIM
2017FE0092

PRIMAliner
SIRIM 2012FE0149, SIRIM 2012FE0150, SIRIM 2012FE0153,
SIRIM 2012FE0154, SIRIM 2017FE0013, SIRIM 2017FE0014,
SIRIM 2017FE0093 & SIRIM 2017FE0094

PRIMAraya
SIRIM 2012FE0151, SIRIM 2012FE0152, SIRIM 2017FE0083
& SIRIM 2017FE0084

PRIMAp plank WOODGRAIN
SIRIM 2013FE0105 & SIRIM 2013FE0106

PRIMAp plank SMOOTH
SIRIM 2013FE0100, SIRIM 2013FE0099, SIRIM 2013FE0098,
SIRIM 2013FE0097, SIRIM 2013FE0468 & SIRIM
2013FE0469

BOMBA Certified (Fire Rating) 1 Hour

No. Fail: JBPM/IRNP: 700-7/2/9-162 (24)
(PEMBAHARUAN KESEPULUH)

**SIJIL PEPASANGAN
KESELAMATAN KEBAKARAN**

APPROVAL CERTIFICATE

Jabatan Bomba dan Penyelamat Malaysia
dengan ini memperakukan
Fire and Rescue Department of Malaysia
hereby certify

DRYWALL CONSTRUCTION
(PRIMA FIRE-RATED DRYWALL PARTITION SYSTEM)
BRAND : PRIMA
MODEL : PRIMADrywall
NOMINAL THICKNESS : 95mm
1 JAM (NON-LOAD BEARING)

Berdasarkan Piawaian
Complying with
BS 476 : PART 22: 1987

Syarikat Berdaftar
Registered company
HUME CEMBOARD INDUSTRIES SDN BHD
(579898-W)
Lot 127220, Kawasan Perusahaan Kanthan,
31200 Chemor,
Perak Darul Ridzuan.

Tempoh sah perakuan: 25/02/2022 hingga 26/02/2024

(PKPJB KAMARULZAMAN MALIK ABDULLAH)
Pegawai
Bahagian Perancangan dan Penyelidikan,
b.p. Ketua Pegawai
Jabatan Bomba dan Penyelamat Malaysia.

Tarikh: 11 Januari 2022

**** Peringatan:**
Sila patuhi sepenuhnya syarat-syarat dan had kegunaan seperti dalam Lampiran A1

No. Fail: JBPM/IRNP: 700-7/2/9-162 (24)
No. Siri: BB/DD/1603/2011 (P10)

LAMPIRAN A1

Jenis Bahan Binaan	: DRYWALL CONSTRUCTION
Jenama & Spesifikasi	: PRIMA FIRE-RATED DRYWALL PARTITION SYSTEM BRAND : PRIMA MODEL : PRIMADrywall NOMINAL THICKNESS : 95mm
Tahap Rintangan Api	: INTEGRITY : 70 MINUTES INSULATION : 70 MINUTES NON-LOAD BEARING
Nama & Alamat Pengeluar	: HUME CEMBOARD INDUSTRIES SDN BHD
No. Laporan ujian/Tarikh	: SIRIM 2011FE0133 (20/05/2011), SIRIM 2020FE0007 (16/01/2020),
Skim Persijilan Barangan	: -----
Had Kegunaan	: TIDAK DIBENARKAN PENGGUNAAN SEBAGAI PARTY WALL & FIRE WALL. PEMASANGAN HENDAKLAH MEMATUHI SPESIFIKASI UJIAN, UBBL 1984 SERTA SYARAT-SYARAT TAMBAHAN SEPERTI DI LAMPIRAN A2 & A3.

Tempoh sah perakuan: 25/02/2022 hingga 26/02/2024

BOMBA Certified (Fire Rating) 2 Hour

No. Fail: JBPM/IP/RNP: 700-7/2/9-442 (20)
(PEMBAHARUAN KELAPAN)

**SIJIL PEPASANGAN
KESELAMATAN KEBAKARAN**
APPROVAL CERTIFICATE

Jabatan Bomba dan Penyelamat Malaysia
dengan ini memperakukan
Fire and Rescue Department of Malaysia
hereby certify

DRYWALL CONSTRUCTION
(PRIMA FIRE-RATED DRYWALL PARTITION SYSTEM)
BRAND : PRIMA
MODEL : PRIMADrywall
NOMINAL THICKNESS : 136mm
2JAM (NON-LOAD BEARING)

Berdasarkan Piawaian
Complying with
BS 476 : PART 22: 1987

Syarikat Berdaftar
Registered company
HUME CEMBOARD INDUSTRIES SDN BHD
(579898-W)
Lot 127220, Kawasan Perusahaan Kanthan,
31200 Chemor,
Perak Darul Ridzuan.

Tempoh sah perakuan: 25/02/2022 hingga 26/02/2024

(PKPJ) KAMARULZAMAN MALIK ABDULLAH
Pengarah
Bahagian Perancangan dan Penyelidikan,
b.p. Ketua Pengarah
Jabatan Bomba dan Penyelamat Malaysia.

Tarikh: 11 Januari 2022

**** Peringatan:**
Sila patuhi sepenuhnya syarat-syarat dan had kegunaan seperti dalam Lampiran A1

No. Fail: JBPM/IP/RNP: 700-7/2/9-442 (20)
No Siri: BB/DD/1758/2013 (P8)

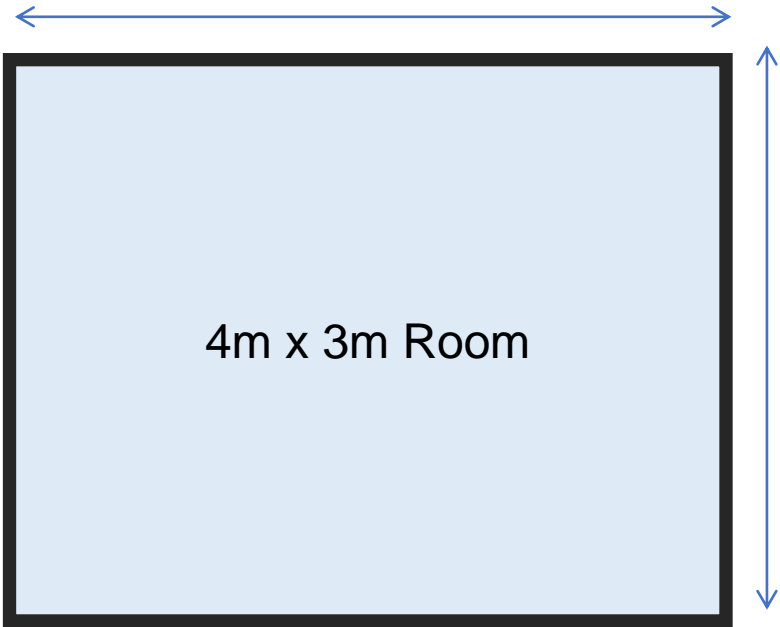
LAMPIRAN A1

Jenis Bahan Binaan	: DRYWALL CONSTRUCTION
Jenama & Spesifikasi	: PRIMA FIRE-RATED DRYWALL PARTITION SYSTEM BRAND : PRIMA MODEL : PRIMADrywall NOMINAL THICKNESS : 136mm
Tahap Rintangan Api	: INTEGRITI : 130 MINUTES INSULASI : 130 MINUTES NON-LOAD BEARING
Nama & Alamat Pengeluar	: HUME CEMBOARD INDUSTRIES SDN BHD
No. Laporan ujian/Tarikh	: SIRIM 2013FE0121 (18/04/2013), SIRIM 2020FE0032 (31/01/2020),
Skim Persijilan Barangan	: -----
Had Kegunaan	: TIDAK DIBENARKAN PENGGUNAAN SEBAGAI PARTY WALL & FIRE WALL. PEMASANGAN HENDAKLAH MEMATUHI SPESIFIKASI UJIAN, UBBL 1984 SERTA SYARAT-SYARAT TAMBAHAN SEPerti DI LAMPIRAN A2 & A3.

Tempoh sah perakuan: 25/02/2022 hingga 26/02/2024

Thin Wall, Save Space

System	Nominal Wall Thickness	Usable Space	Extra Space m²	Extra Space %
	76m	11.47m²	0.50m²	5%
BRICK WALL	150mm	10.97m²	N/A	N/A



Extra 5% Usable Floor Space



Conquas & Qlassic



Straight Wall (Conquas & Qlassic Compliance)

Acceptable Finished Wall

Surface evenness

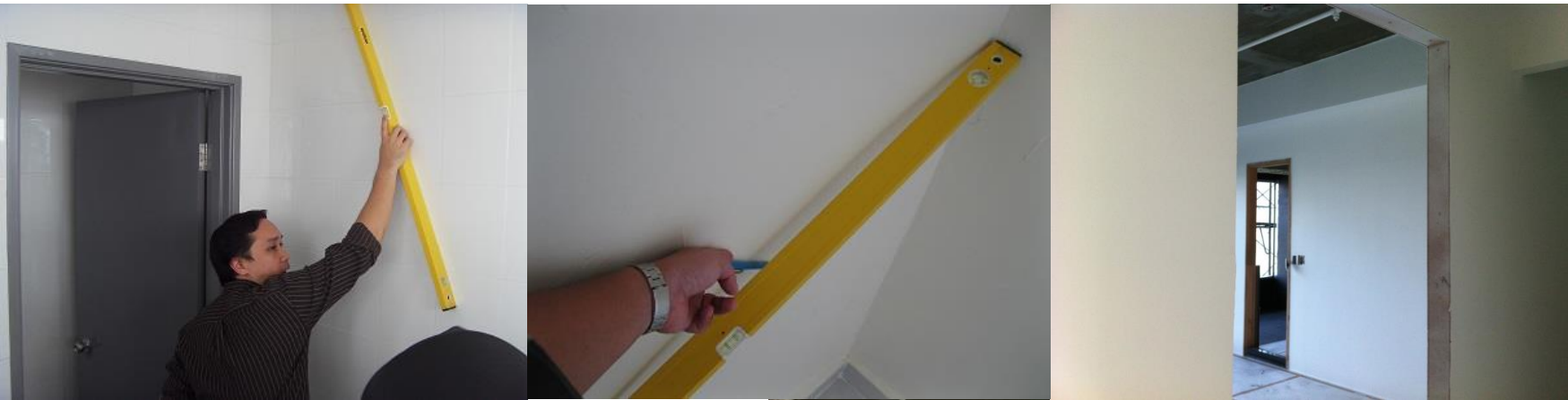
- 3mm max. over 1.2mm length

Verticality

- 3mm max. over 1.2mm length
- 5mm max. over 3.6 height

Alignment Quality

- ✓ Surface Evenness & Vertically <3mm over 1.2m length
- ✓ Wall Verticality <5mm over 3.6m height



GBI Contribution

Criteria	Maximum Points Achievable							PRIMA Contribution
	NRNC	RNC	NREB	TS	INC	IEB	NRNC, DC	
 Energy Efficiency • Minimum EE Performance • Advance EE Performance	1	3	2		1	2	1	✓
		10						✓
 Indoor Environmental Quality • Sound Insulation / internal noise level	1	2	1		1	1	1	✓
 Sustainable Site Planning and Management • Construction System and Site Management (IBS) • Quality Assessment System for Building Construction Work (QCLASSIC)		3						✓
	1	1			1		1	✓
 Materials and Resources • Recycled Content Materials • Regional Materials	2	1	1		2	1	2	✓
	1	1			1	1	1	✓
 Innovation • Green Building Index Accredited Facilitator	1	1	1	1	1	1	1	✓
 Building and Resources • Low Impact Material (Building / Structures) • Regional Material • Quality In Construction • Sustainable Construction Practice				1				✓
				1				✓
				2				✓
				2				✓

SCORING CRITERIA

- ✓ Energy Efficiency
- ✓ Indoor Environment Quality
- ✓ Sustainable Site Planning & Management
- ✓ Material & Resources
- ✓ Innovation
- ✓ Building & Resources



Fast Construction

Excellence Speed of Construction by adopting IBS

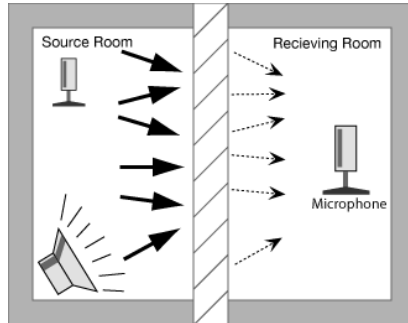
Productivity for conventional brick wall with plastering: **5m² per man day**



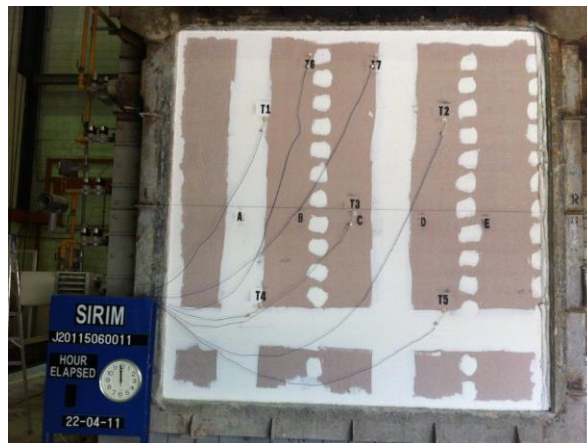
Productivity for IBS

PRIMA^{drywall} : **25m² per man day**

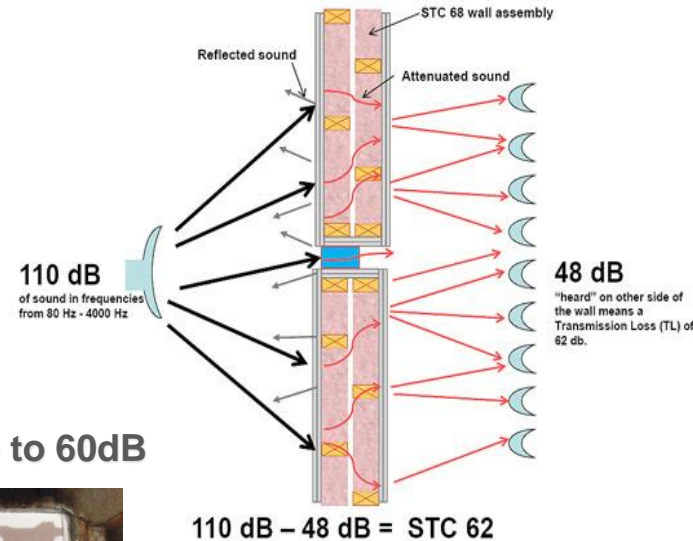
Engineered STC, Fire & Impact Performance



STC can be engineered up to 60dB



Fire Rating can be engineered up to 2 hrs



Impact Resistant can be engineered to Severe Duty Grade, BS5234, Part 2

Free from Wall Stiffener

Standard Requirement for Brick / Block Wall Construction

- Provide Vertical Stiffener (Column) at every 3m Length
- Provide Horizontal Stiffener (Beam) at every 3m Height



No vertical stiffener required.

No horizontal stiffener required for wall height up to 8m.

FLEXIBLE DESIGN

CURVED WALL APPLICATION

- Maximum curve radius at 1.8m (6mm thk boards)
- Smooth curve and even wall surface





thank
you!


FIBRE CEMENT BUILDING SOLUTIONS

